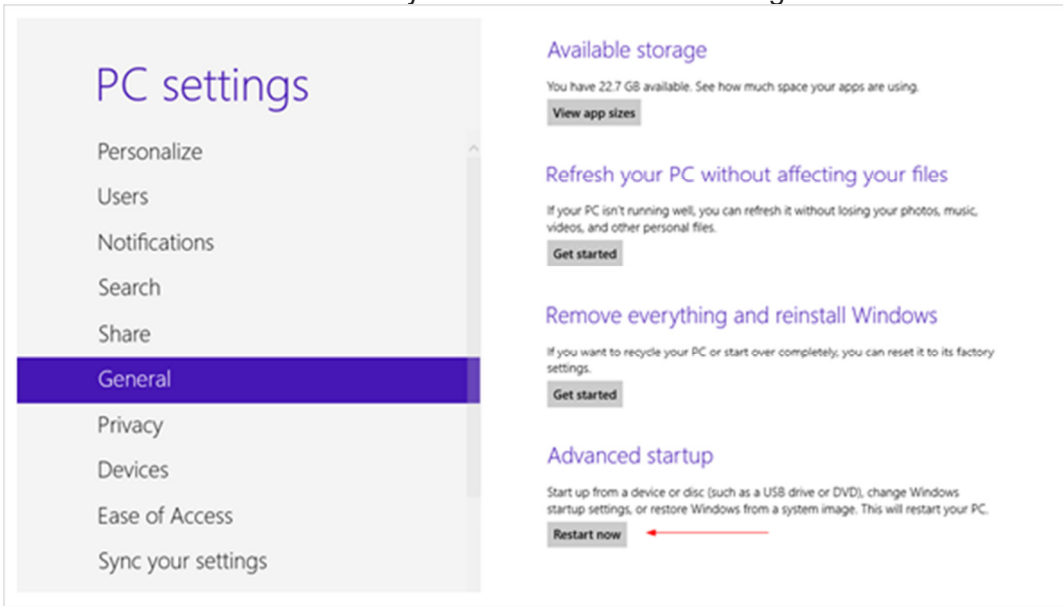


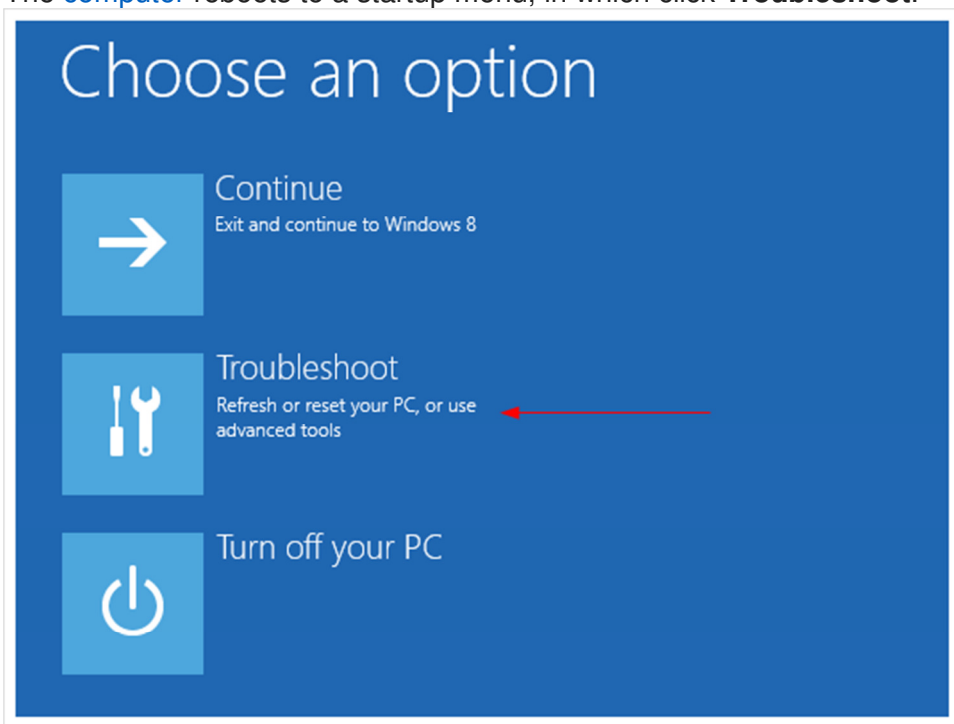
How To Install Legitronic v366 Printer Drivers under Windows 8 – 64bit (Workaround)

First, press **win + I** to launch the charm bar, and click **Change PC Settings** at the bottom.

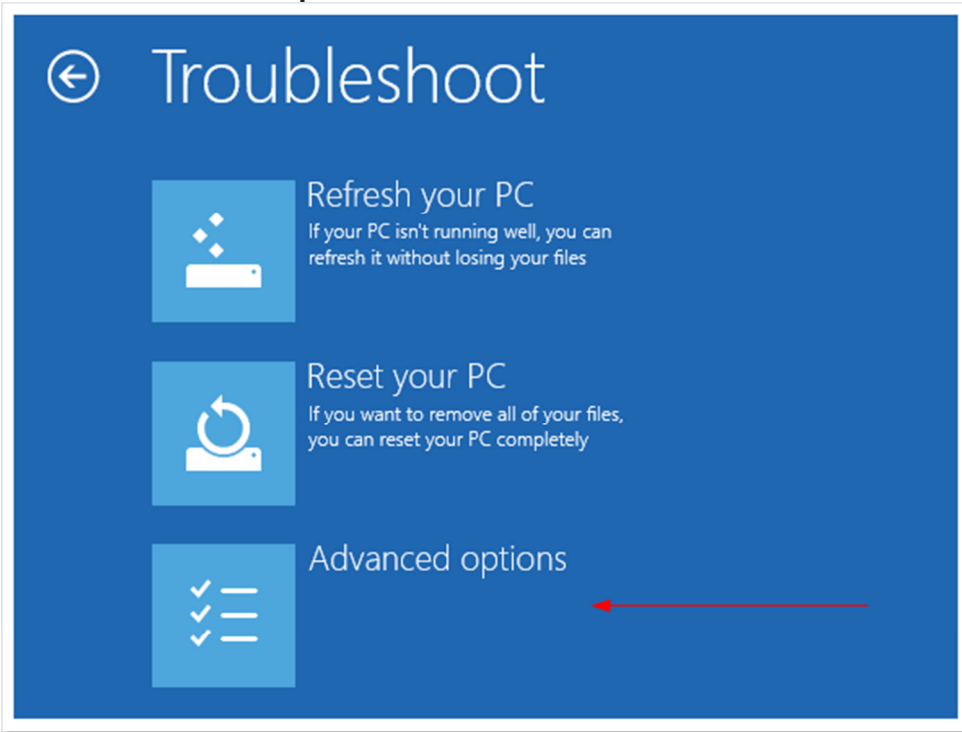
Then, go to **General**, and scroll to the bottom of the page, click **Restart Now** button under **Advanced Startup** section. Remember to save all your work first before clicking it.



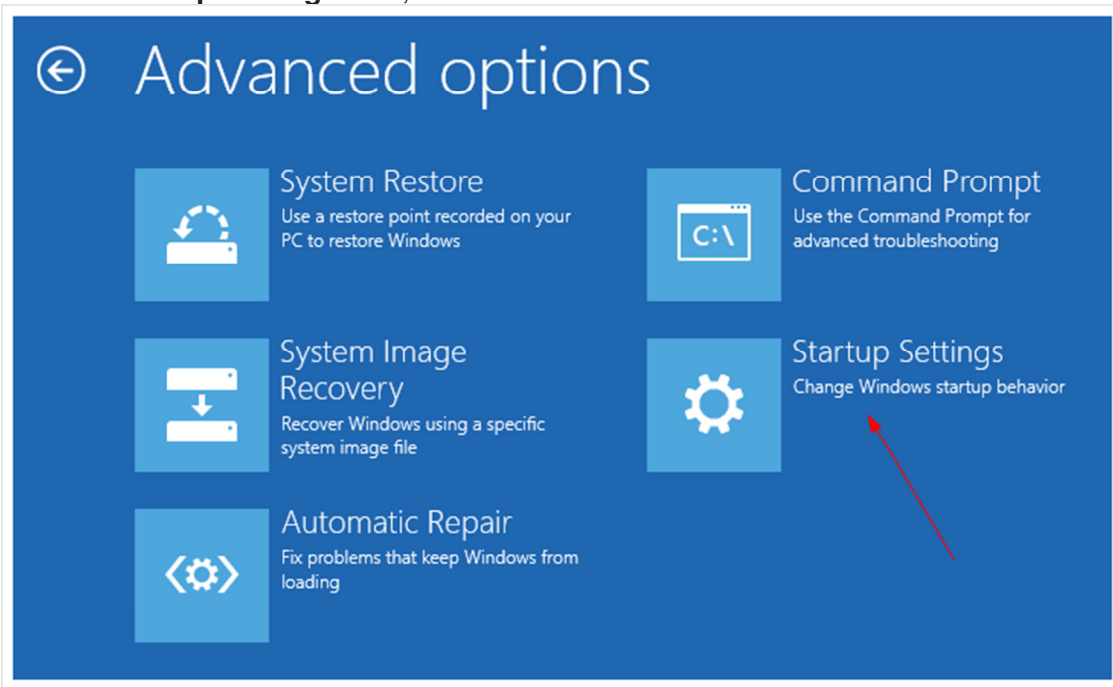
The **computer** reboots to a startup menu, in which click **Troubleshoot**.



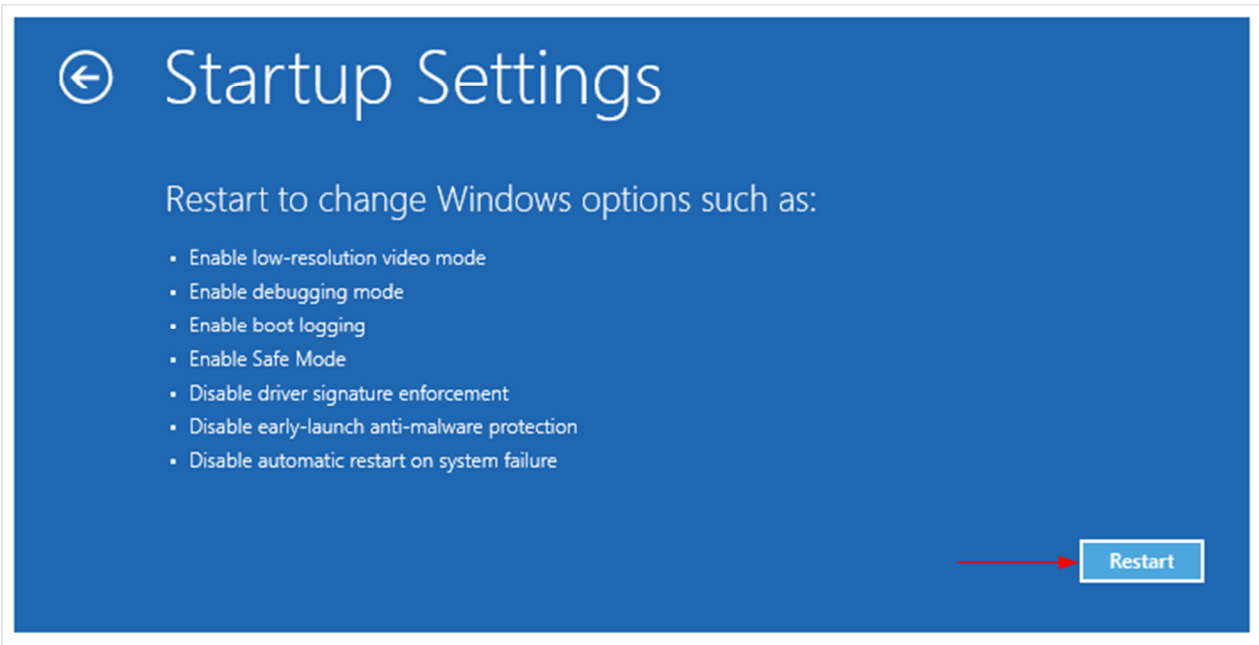
And click **Advanced Options** at next screen.



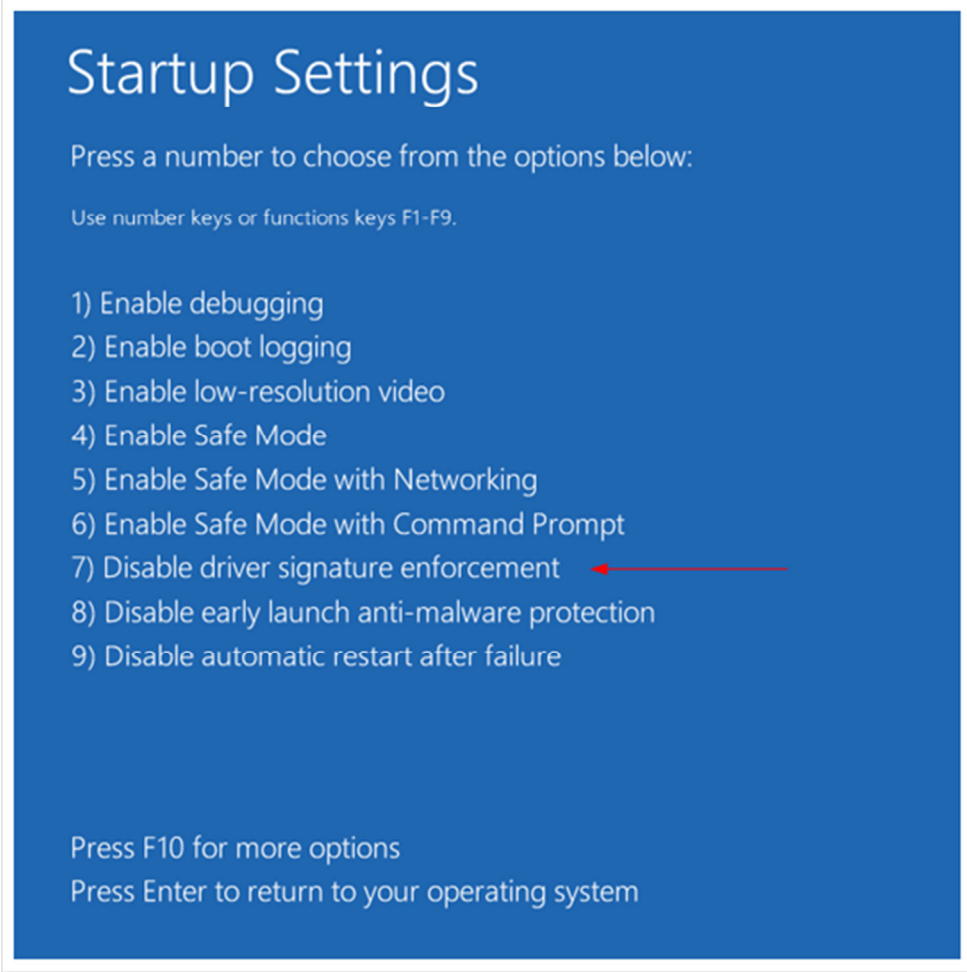
Choose **Startup Settings** next,



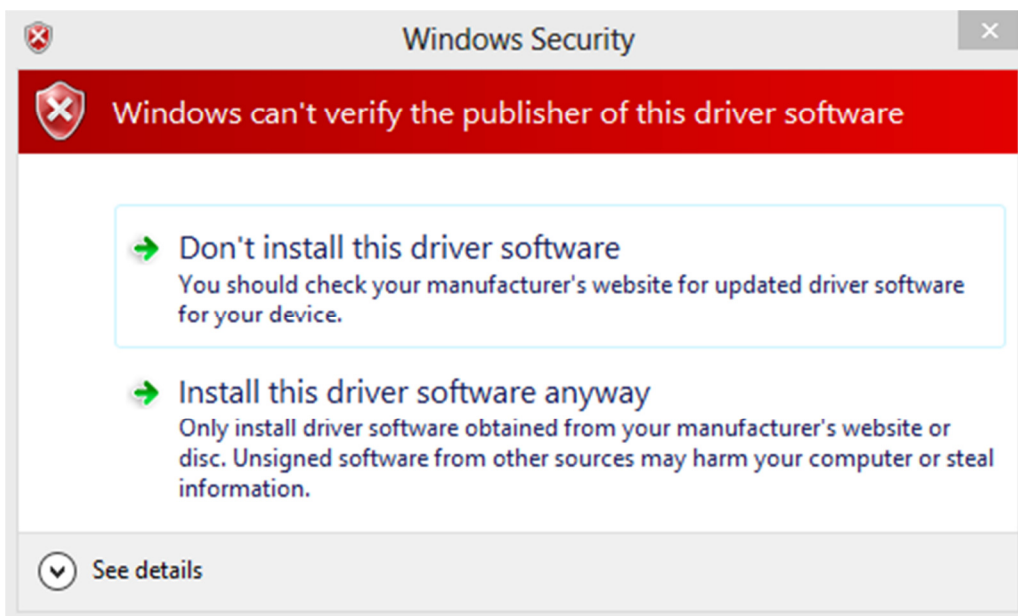
And click **Restart** button.



The computer reboots and prompts another menu to choose. One of the items is to **Disable driver signature enforcement**. Press number **7** or **F7** to continue booting to Windows 8 with digital sign enforcement disabled.



And then I was able to get the Windows Security warning [window](#) offering me to install this driver anyway.



It was successful! Restart computer once again to re-enable the digital sign enforcement.

I would suggest changing the UAC settings first to see if the [Install](#) Anyway window prompts out. The solution showing off in this post should be the last resort to try out. And make sure the driver you are about to install is safe, though not digitally signed.