



Legitronic® Labeling Software

10/04/2011 VERSION 366



Table of Contents

Check List	3
Hardware Requirements	
Minimum Computer System Requirements	4
Software Installation	
Check for Previously Installed Legitronic® Labeling Software	5
<u>Recommended Installation:</u>	
*Installing Legitronic® Labeling Software (<u>Use Defaults</u>)	7
Automatic Installation of Legitronic Software and USB Hardware-key Security Module Driver	8
Add Printer	9
Confirm License Key	11
Exit Installation	12
<u>The following steps only need to be performed if Legitronic is going to be controlled by external program written in VBA, Visual Basic, C#, etc.</u>	
Registering Legitronic for Automation	13
Verifying the Legitronic Automation Server is Registered	13
<u>Alternate Installation for “Software Keys” Only:</u>	
Installing Legitronic® Labeling Software (<u>Custom</u>)	14
Software Key Single User Installation	18
Software Key Multi User Installation	22
Installing a Soft Key License on the Network Server	22
Configuring a Windows XP(32-bit),VISTA/Windows 7 (32-bit & 64-bit), and Windows Server 2003/2008 workstation to address the License Server	23
<u>The following steps only need to be performed if Legitronic is going to be controlled by external program written in VBA, Visual Basic, C#, etc.</u>	
Registering Legitronic for Automation	25
Verifying the Legitronic Automation Server is Registered	25
Printer Installation	
Installing a Windows Print Driver	26
Administrative Login	35

Congratulations on the purchase of your new labeling software from Weber Packaging Solutions, Inc.

This booklet contains easy to follow step-by-step instructions that will assist you with the complete process of setting up your labeling software.

You have received an envelope containing the components that are required Legitronic® Labeling Software. Verify that you have received the following before beginning the process.

- Legitronic® Labeling Software CD
- USB License Device (Only for Hardware Key Version)

You are ready to install your new Legitronic® Labeling Software!

Contact Information:

Phone: 847-364-8500 Ext. 773

Fax: 847-364-8510

E-Mail: legi@weberpackaging.com

Hardware Requirements

Follow the manufacturer's manual for the PC installation instructions.

Minimum Computer System Requirements for Legitronic® Labeling Software

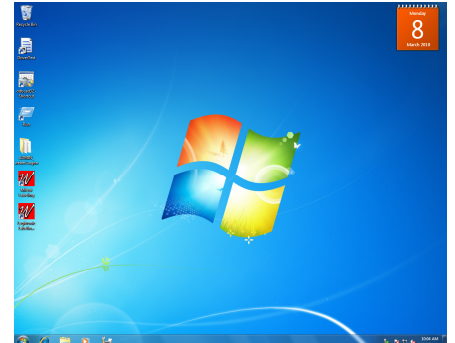
- ❑ Pentium 4 class processor or equivalent
- ❑ Windows 2000 Professional, Windows XP® Professional , Windows VISTA®(32-bit and/or 64-bit), Windows 7®(32-bit and/or 64-bit), Windows Server 2003, Windows Server 2008.
- ❑ 2GB RAM
- ❑ 100 MB Available Hard Disk Space
- ❑ USB Port (*for installing Hardware Key / License Device*)

Before Performing any Software Installation

Verify if any versions of our Legitronic software has been loaded on the PC, follow the following steps.

Check for previously installed Legi For Windows

1. Turn on your PC.
2. Locate the Legi for Windows® Icon on your desktop.

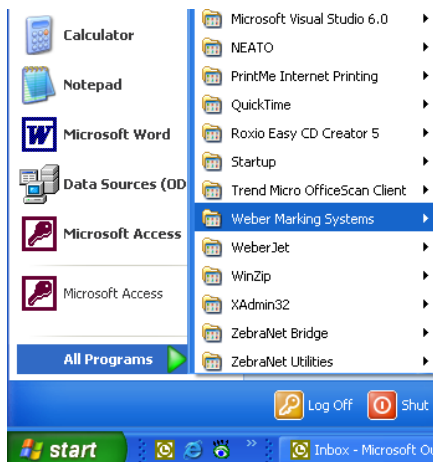


Windows XP(32bit)

Windows VISTA(32& 64bit)

Windows 7 (32& 64bit)

3. If you have an icon:
 - ❑ You will need to uninstall Legi for Windows® continue with step 5
 - ❑ If you do not have a Legi for Windows® Software icon continue with step 4.
4. Press your Windows Start button.
 - ❑ Select the Programs option from the Start Menu.
 - ❑ Locate the Weber Marking Systems Program Group
 - ❑ If you have a folder within the Weber Marking Systems Program Group called Legitronic® Labeling Software, the program has been loaded on your system.
 - ❑ If you do not have a Program Folder or Icon called Legitronic® Labeling Software, proceed to the ***Installing*** Legitronic® Labeling Software section of this booklet on page 7, see screen below.



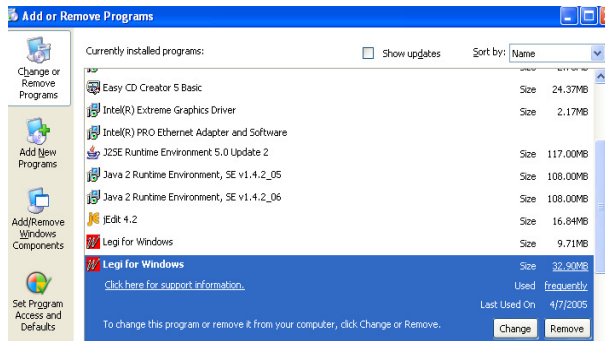
Windows XP (32-bit)



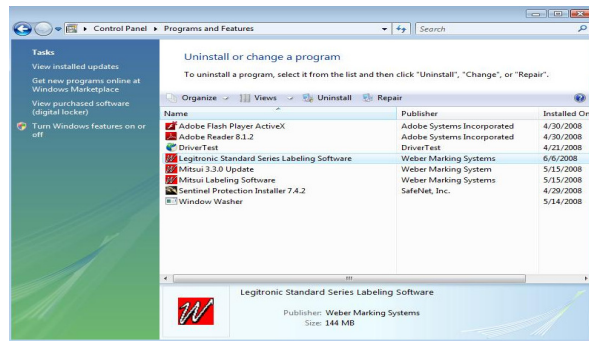
Windows VISTA & 7 (32 & 64-bit)

5. Press your Windows Start button

- ❑ Select the Control Panel option from the Start Menu.
- ❑ Select the Add or Remove Programs in the Control Panel
- ❑ Press the Remove button and remove both Icons



Windows XP(32-bit)



Windows VISTA & 7 (32 & 64-bit)

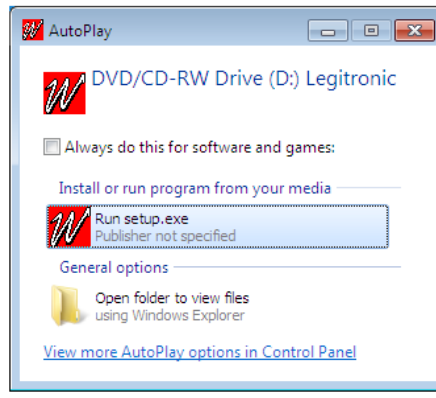
- ❑ When “Legitronic” or “Legi for Windows”® is uninstalled continue to ***Installing*** Legitronic® Labeling Software section of this booklet **on page 7**

Recommended Installation:

***Installing Legitronic® Labeling Software(Use Defaults)**

NOTE: It is important that no other programs are running in the background. Other open programs can interfere with successful installation of Legitronic® Labeling Software. If there are any open programs, press Cancel button to exit the Installation Process. Close all open programs then go back to Step 1 to restart the installation process.

1. Insert the Legitronic Software CD into your CD-ROM drive. The installation process should start automatically.
 - ❑ If the Install does not begin on its own. Select the **Run Setup.exe** from the “AutoPlay” window that appears from off the CD:

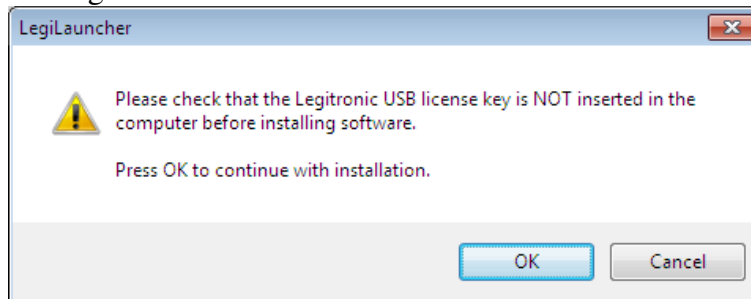


2. The Legitronic Software Installer window should appear on the screen



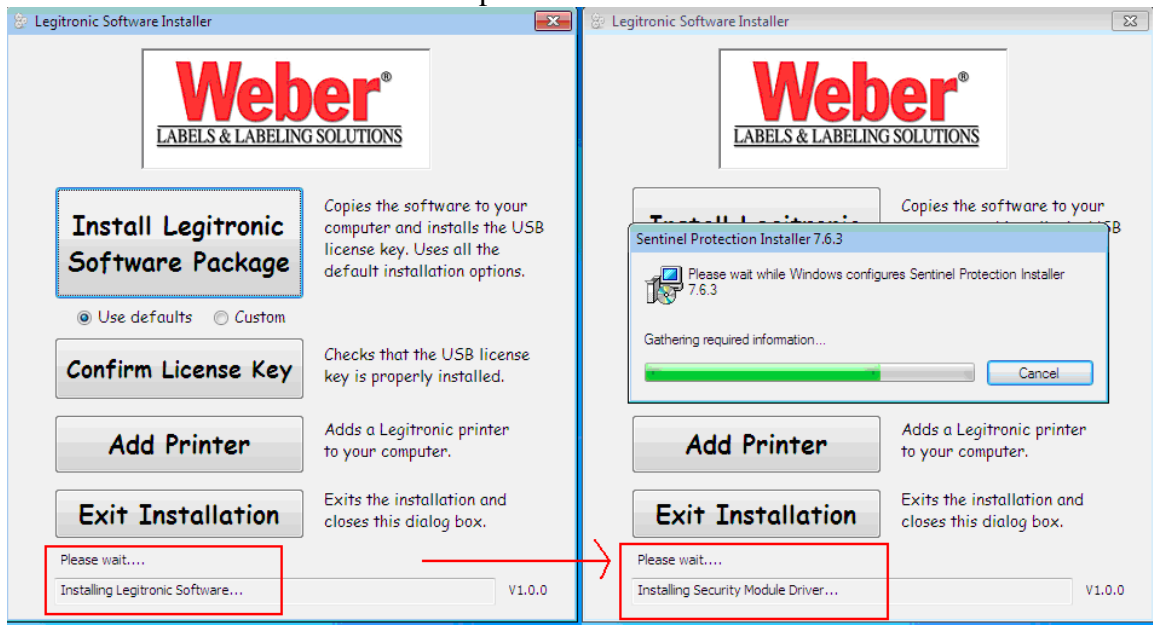
- ❑ Select “**Use Defaults**” under the “**Install Legitronic Software Package**” button and this will go through the installation of both the Legitronic software and the Sentinel Driver for the USB License key.
- ❑ Click on the “**Install Legitronic Software Package**” button to start the installation of Legitronic software and Sentinel License driver.

- ❑ Make sure you **do not** have the USB Hardware key(dongle) attached when performing the installation of software.

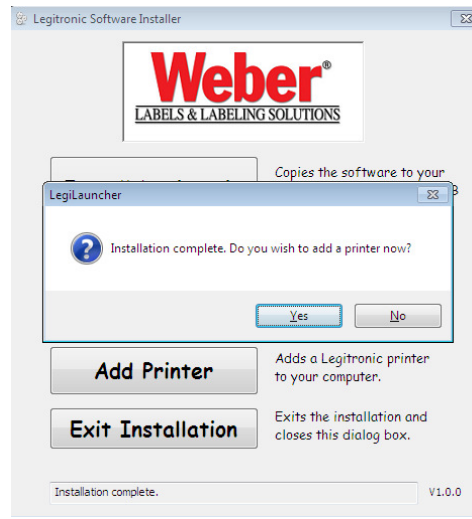


3. The Legitronic Software Installer window will show the status at the bottom of its window stating...

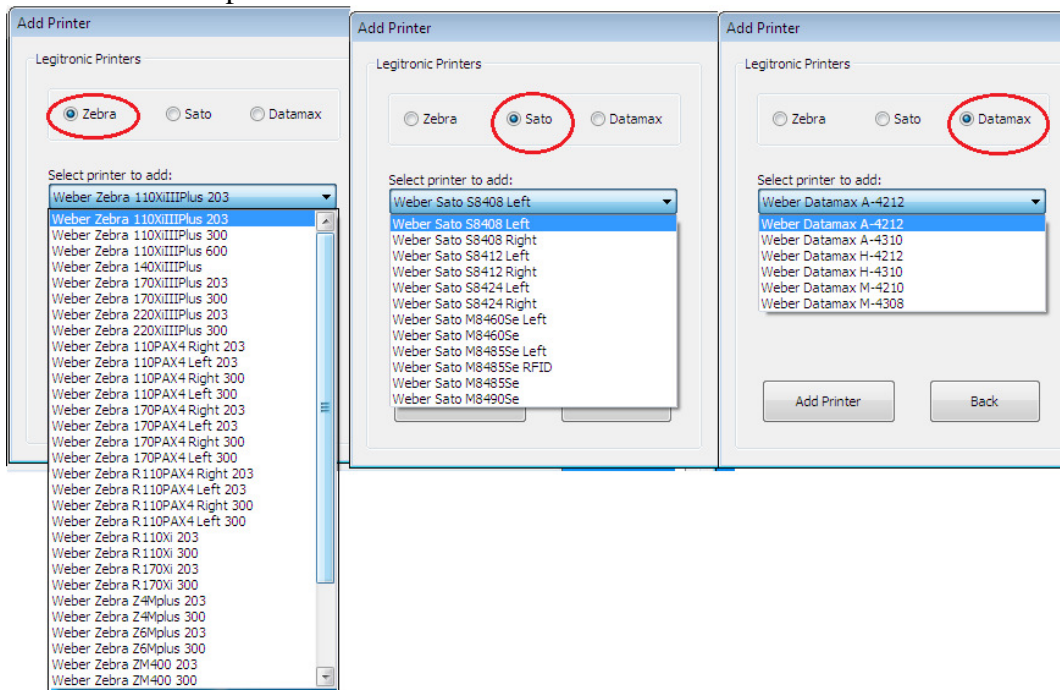
- ❑ “Please wait...Installing Legitronic Software” and then
- ❑ next will automatically start with “Please wait...Installing Security Module Driver” as shown in the two pictures below:



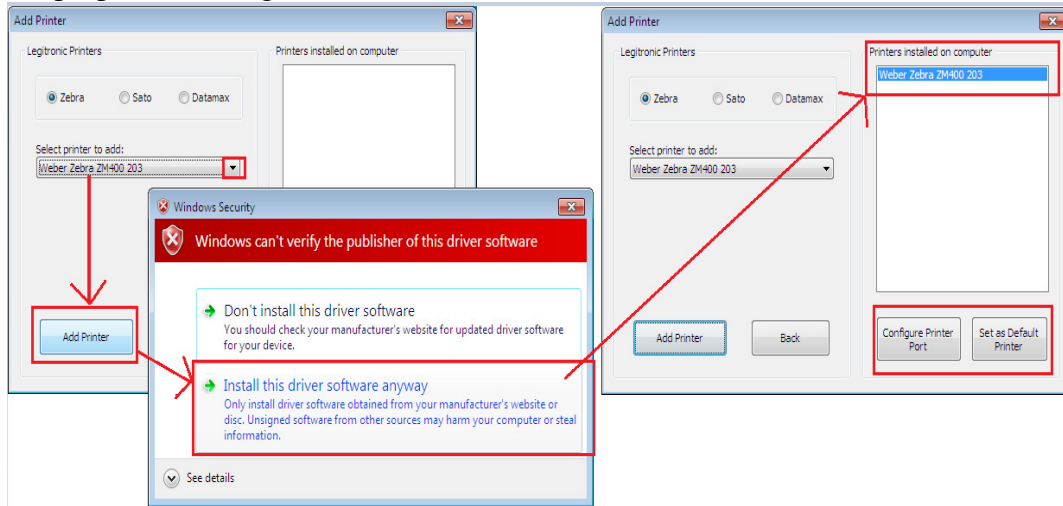
4. Once the Legitronic Software Installer's installation is complete- it will ask next if you wish to proceed with setting up a printer driver... "Do you wish to add a printer now?"
 - ❑ click on the "Yes" button to continue with setting up the printer driver at this time,
 - ❑ or click "No" and later click on "Add Printer" button on this Installer Window to add a print driver at a later time.



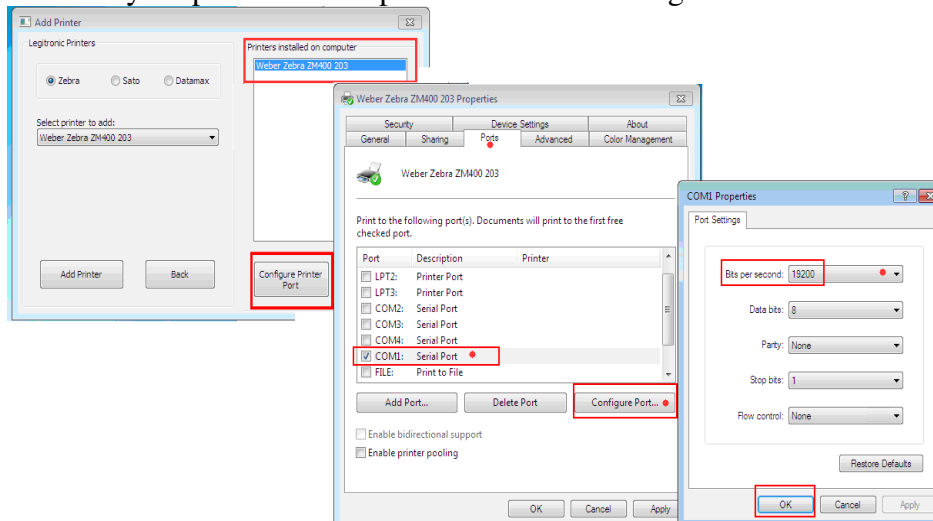
5. The following Printer Manufacture models are available for Zebra, Sato & Datamax.
To select one, click on Zebra, Sato or Datamax and the drop-down "select" bar will have the various drivers our Legitronic Software supports for each model as shown in the picture below:



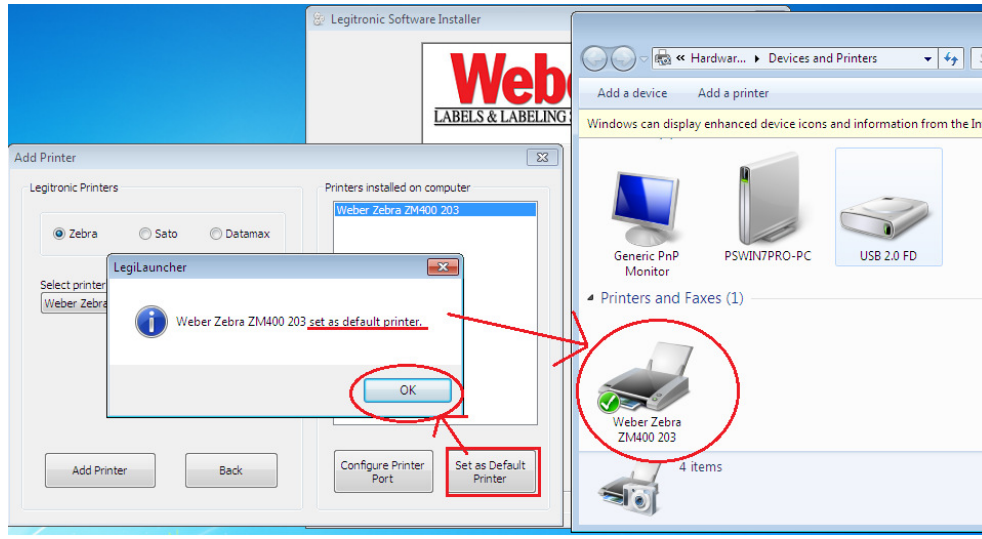
6. After selecting the type of printer- click on the “Add Printer” button and the following Microsoft warning screen will appear; select “Install this Driver Software Anyway” and this will add the printer you selected to the Printers Installed on your computer.
 - ❑ You can click on the “Configure” button to configure the printer’s port settings & set it as the default printer by clicking on the “Set the Default Printer” button on this screen at this time,
 - ❑ or go to Printer Properties under “Printers & Faxes” later to alter printer properties settings



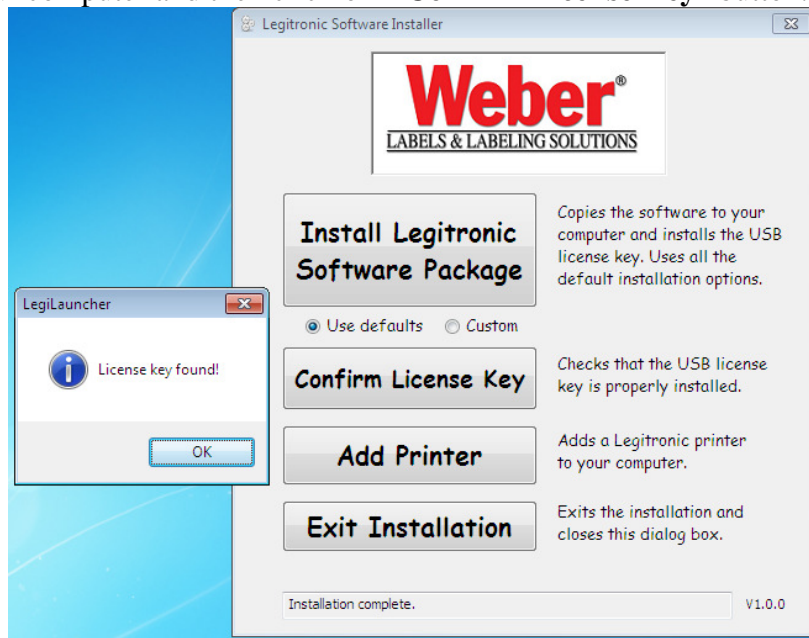
To “Configure” the printer, select the type of port it is connected to, LPT(parallel), COM(Serial) or USB. Under the COM(Serial) port settings the “Configure Port” button is where you would set the Bits per Second(BAUD Rate) to match your printer’s front panel Baud Rate setting.



7. Clicking on the “Set as Default Printer” will set this print driver to be the default printer in the listing of print drivers you have under Window’s “Printers & Faxes” or “Devices and Printers” :

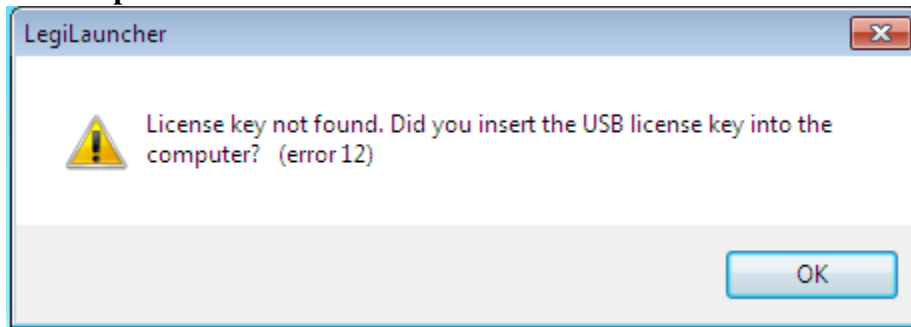


8. When you are done adding your printer- the last test you may perform on the Legitronic Installer Window is click on the “Confirm License Key” button. This checks that the USB license key (dongle) is properly installed and seen when attached to the USB port of your computer.
- Plug the **USB License Device Key** into a **USB port** on the back or front of your computer and then click on “**Confirm License Key**” button.



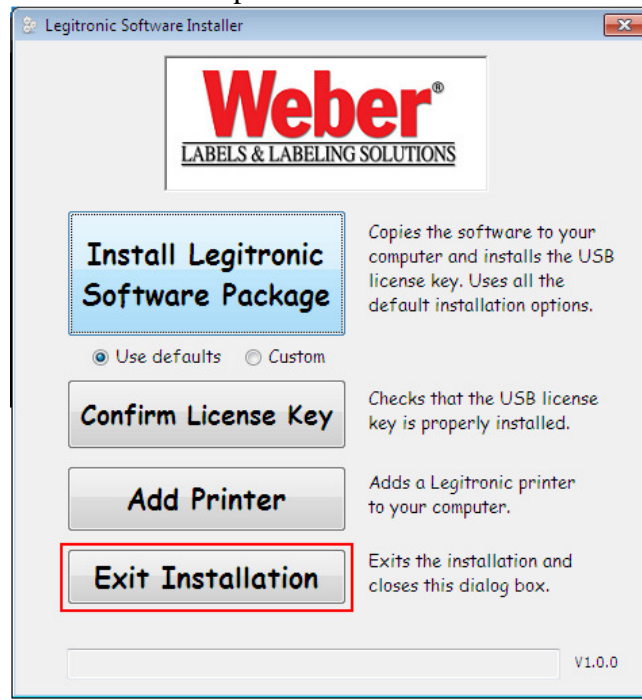
- When the USB Key is attached and that the installation of the Sentinel Driver has been completed – then the message you should see is “**License key found!**”

If you did not connect the USB License Key on one of the USB ports of your PC or if you did not complete the installation of software, then the following message will appear, “**License key not found. Did you insert the USB license key into the computer?**”:



- Plug the **USB License Device Key** into a **USB port** on the back or front of your computer and this message will disappear the next time you click on the “Confirm License Key” button.

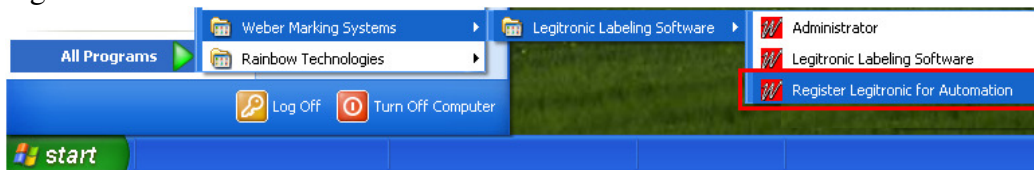
9. The “**Exit Installation**” Button will close the Legitronic Software installation menu window. You may click on this button at any time or when you have completed all installation steps for the software and rivers.



Registering Legitronic for Automation

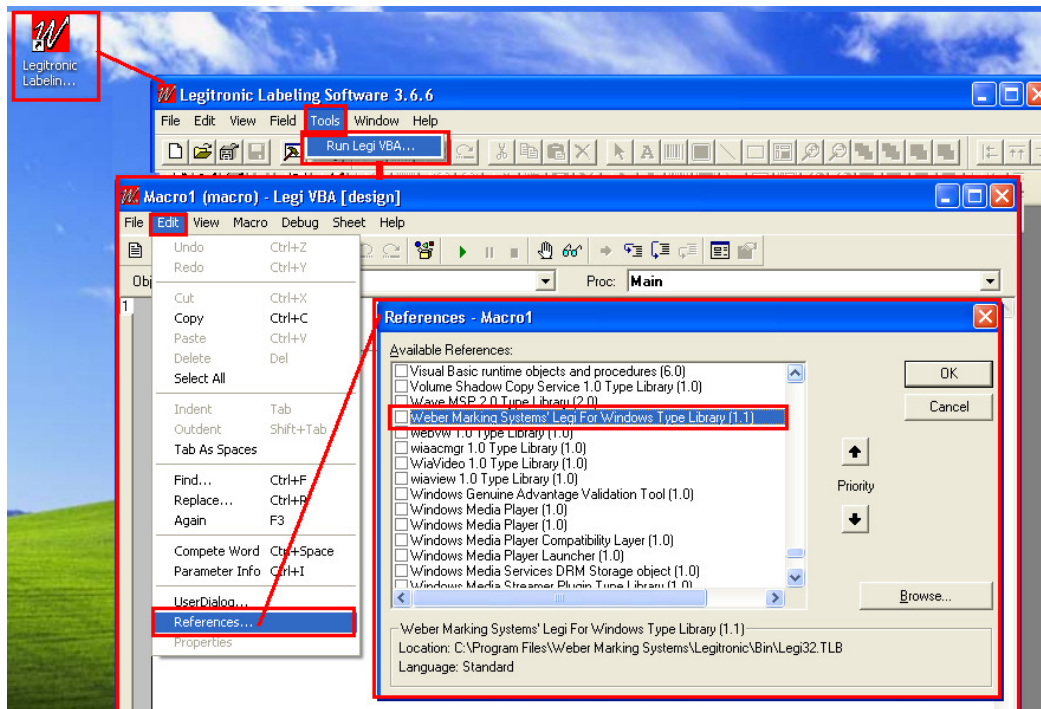
The following steps only need to be performed if Legitronic is going to be controlled by external program written in VBA, Visual Basic, C#. etc.

1. After exiting the software installation by clicking on “**Exit Installation**” Button, You will want to go to “**Start→ Programs→Weber Marking Systems→Legitronic Labeling Software→** and click on “**Register Legitronic for Automation**”. By clicking on this menu selection button will ensure that the automation server is registered.



Verifying the Legitronic Automation Server is Registered

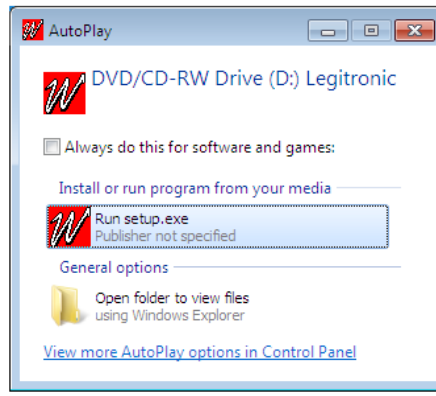
2. Launch the Legitronic Software and click on the following menu buttons; “**Tools→ Run Legi VBA→**(macro1 window will appear)→ click on **Edit →References...→** then, scroll through the listings of available references till you see: “**Weber Marking Systems’ Legi for Windows Type Library (1.1)**” to check for the application’s registration.



Alternate Installation for “Software Keys” Only: Installing Legitronic® Labeling Software(Custom)

NOTE: It is important that no other programs are running in the background. Other open programs can interfere with successful installation of Legitronic® Labeling Software. If there are any open programs, press Cancel button to exit the Installation Process. Close all open programs then go back to Step 1 to restart the installation process.

1. Insert the Program CD into your CD-ROM drive. The installation process should start automatically.
 - If the Install does not begin on its own. Select the **Run Setup.exe** from the “**AutoPlay**” window that appears from off the CD:



- The Legitronic Software Installer window should appear on the screen

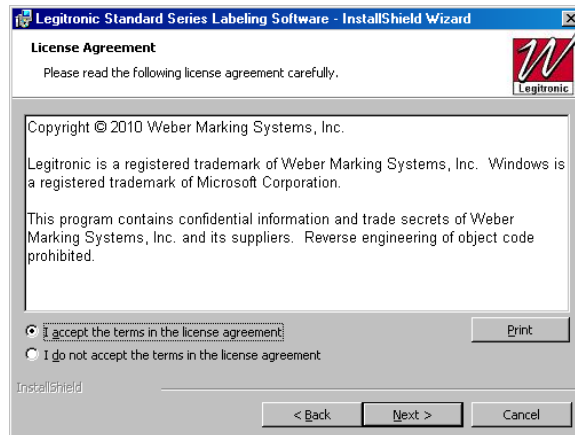


- Select “**Custom**” under the “**Install Legitronic Software Package**” button and this will go through a Custom installation.
- Click on the “**Install Legitronic Software Package**” button to start the installation of Legitronic software and Sentinel License driver.

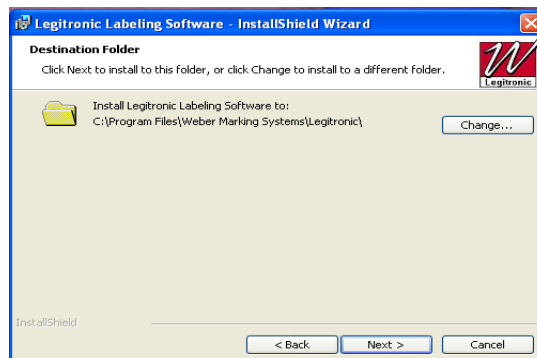
2. The following “Custom” Installation wizard should appear on the screen with all the various selections to be made during this “Custom Install”



- ❑ Press Next button to install the program or press Exit button to exit the installation.
3. The following screen shows the license agreement. The user must accept the terms and press Next to continue the installation.



4. You are now asked to choose the directory where you would like to install Legitronic® Labeling Software. The default directory for Legitronic® Labeling Software is C:\Program Files\Weber Marking Systems\Legitronic

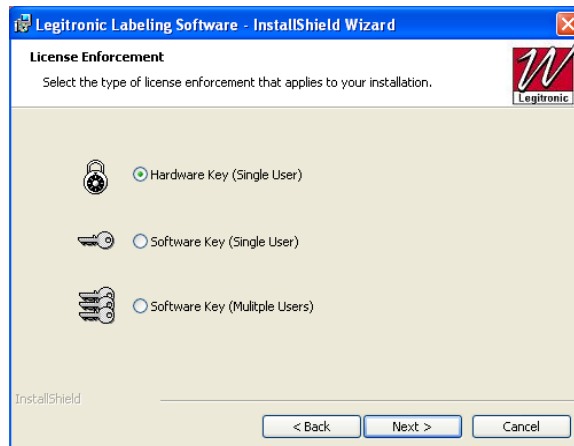


- ❑ To select an alternate directory, press the Change button, and select a new path. Press
- ❑ Next to continue.

5. The next screen will ask you to choose the language Legitronic® Labeling Software will run in.

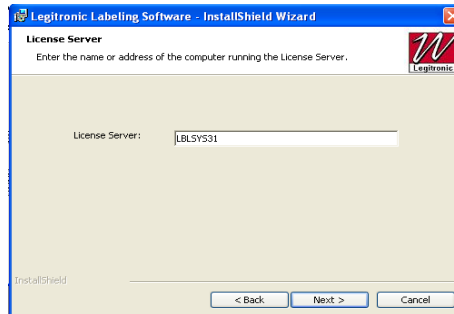


- To Change the language Click on the scroll down box once you have selected your language press Next to continue
6. The next dialog prompts the user to select the type of the license that has been purchased.
- Select License Type (since this is a “**Custom Install**” then you would be most likely choosing “**Software Key(Single-User)**” or “**Software Key(Multiple User)**” for this type of installation) and press Next.

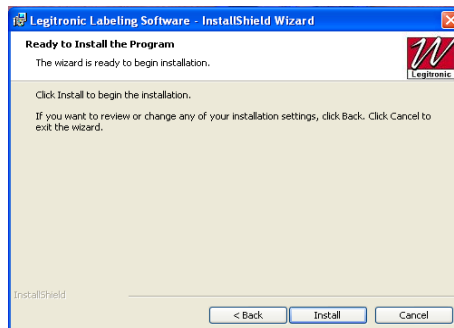


- If the **Software Key Single User** has been purchased select Software Key Single User option. After completing the installation process refer to “**Software Key Single User Installation**” section of this booklet on page 18.
- If the **Software Key Multi User** has been purchased select Software Key Multi User option. After completing the installation process refers to “**Software Key Multi User Installation**” section of this booklet on page 20.

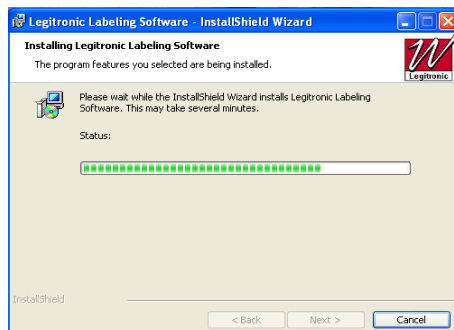
6. If you selected Software Key (Single User or Multi User) a License server screen will appear.
- Type in your Server Computer Name then press Next to continue



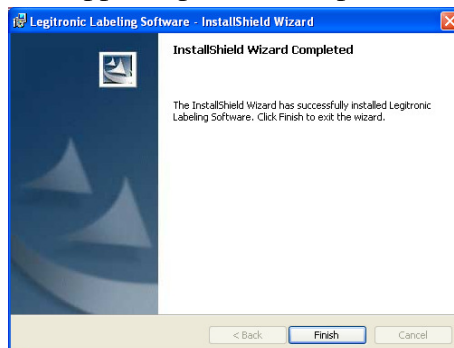
The following dialog will appear. Legitronic® Labeling Software is ready to install the program, press Install.



The following screen will appear and Installation will begin. Press Cancel to cancel the Installation.



The following dialog will appear upon the completion of the installation. Press Finish.

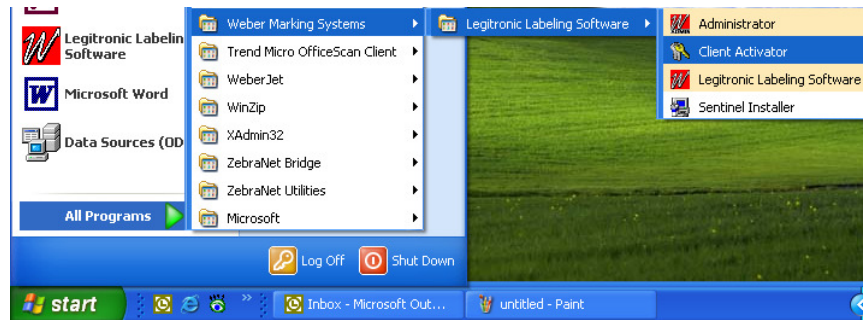


- At this point you may be asked to reboot.

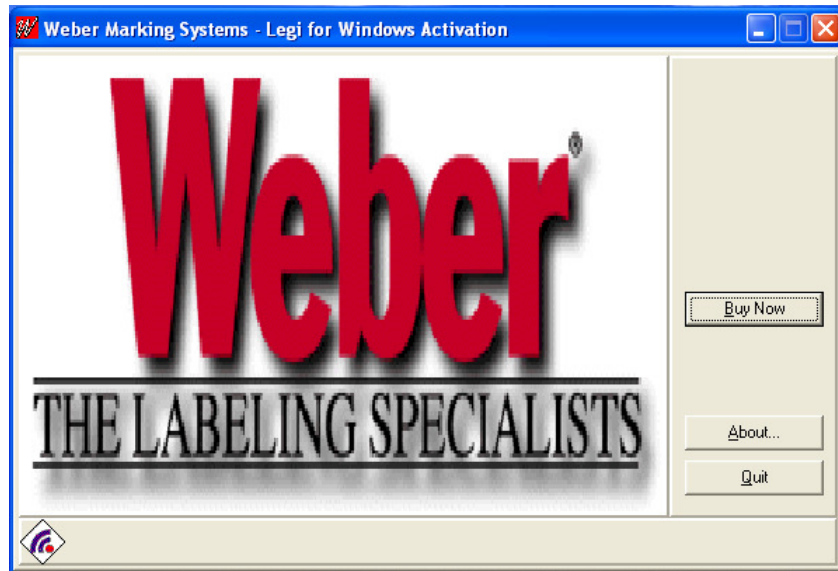
Software Key Single User Installation

Continue with this section if you have purchased a software key single user version of Legitronic® Labeling Software.

1. Go to Start menu on your desktop; locate Programs group, Weber Marking Systems, Legitronic® Labeling Software and open Client Activator.



- The following screen will appear:



2. Select the Buy Now option button and call Weber Marking Systems at (847) 364-8500 ext.773. The user will be asked the Company's Name, package type, Legitronic® Labeling Software version, and locking code as indicated on the next screen.



3. Enter the License Code provided by Weber Marking Systems Product Specialist.
 - ❑ After you enter the License Code press Next.
 - ❑ Finish the activation process.
4. Restart the Workstation.
 - ❑ Run Legitronic® Labeling Software and verify that the PC finds the license.
 - ❑ Continue with “**Printer Installation**” section of this booklet on page 24.

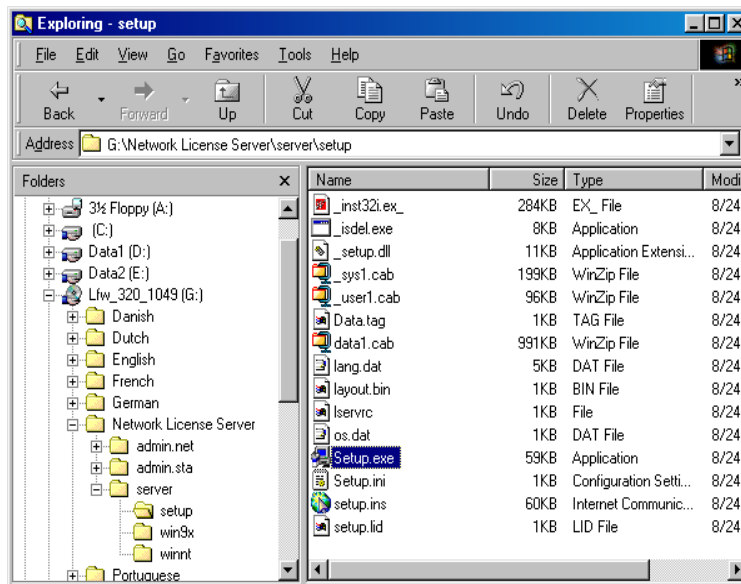
Software Key Multi User Installation.

Continue with this installation if you purchased a multi user license version of Legitronic® Labeling Software.

When the Software Key Network Installation option is selected at installation time the following steps should be performed to complete the installation process. Make sure that you are logged on as administrator before performing the following steps:

Installing a soft key license on the network server

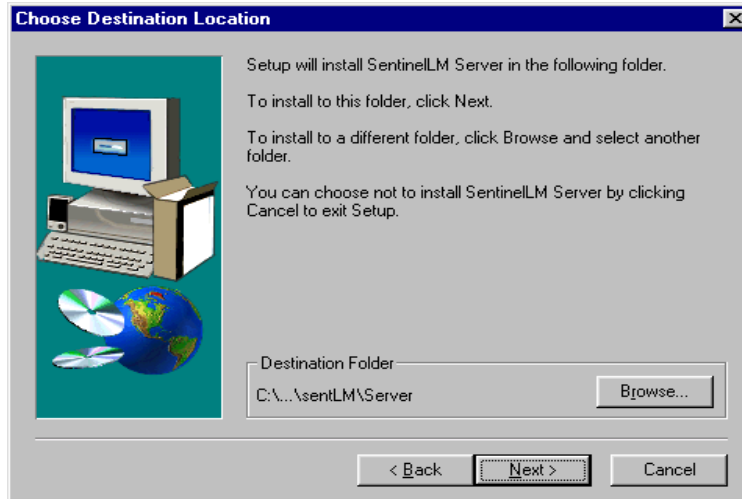
1. On the server run the **SETUP.EXE** from following directory on the Legitronic® Labeling Software CD \Network License Server\server\setup\setup.exe. This will install the License Manager services. (See the screen below)



- Press Next button to continue with the installation of the License Manager.



- The next screen will allow you to change the Destination Folder, to continue press Next.



NOTE: The Status of SentinelLM® should be running at all times that Legi For Windows® is used, if you Exit the SentinelLM® your Labeling Software will not function.

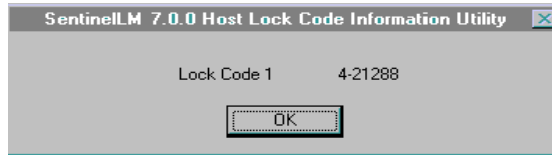
- If the installation of SentinelLM® is successful the following screen will appear. It will inform the user of the status of License Manager.



To Exit the License Manager go to File and Exit on the main menu.

Installing Number Of Users

1. From a DOS prompt run **ECHOID.EXE** from the \Network License Server\admin.net\win32 directory on the Legitronic® Labeling Software CD and get the locking code for the network server.



2. From the DOS prompt, set the **LSHOST** environment variable equal to the computer name. Use following syntax:

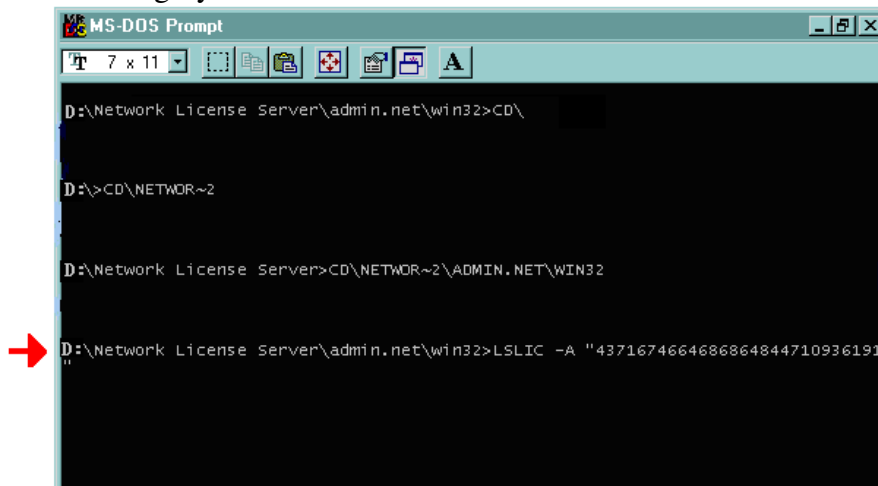
Set lshost=computername

3. Still in the DOS window, change your directory to \Network License Server\admin.net\win32 on your network drive.
4. Call Weber Marking Systems at (847) 364-8500 ext.773 and supply the Company's Name, package type, and locking code.
5. To add the license number, type the following command line:

Lslic -A "license number"

*From the "CDROM" drive, whatever letter drive that is on your server....
In our example below it is "D:\".*

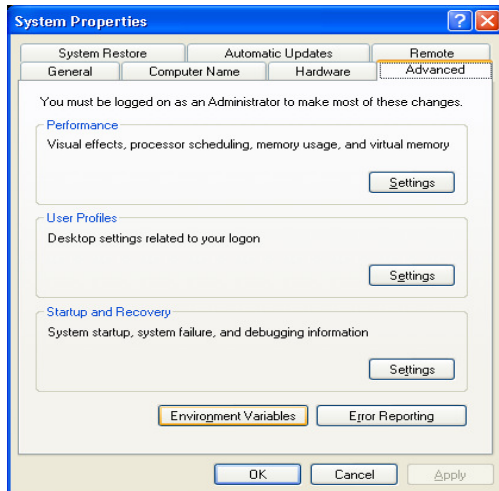
License number entered within the quotes will be the number given to you by Weber Marking Systems. *See Screen below.*



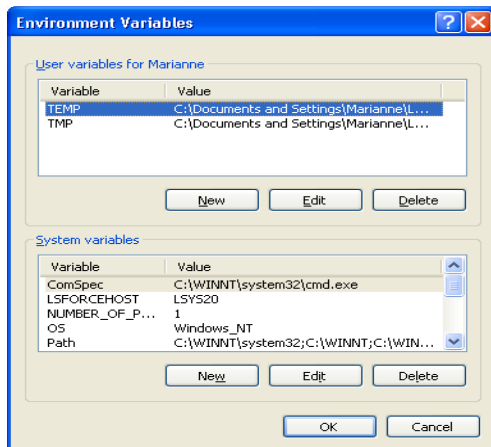
- If you are installing Legitronic® Labeling Software on a Windows XP &/or VISTA computer refer to “**Configuring a Windows XP &/or VISTA Workstation to address the license server**” section of this booklet on page 22.

Configuring a Windows XP(32-bit) ,VISTA/Windows 7(32 & 64-bit) and Windows Server 2003/2008 Workstation to address the license server.

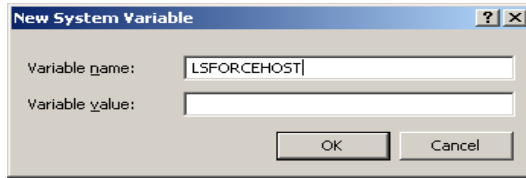
1. Make sure that Legitronic® Labeling Software is installed on the PC.
2. Right click on the My Computer icon on the desktop.
3. Select Properties from the popup menu.
Note: If different users will run Legitronic® Labeling Software, you should sign on as administrator. This way you can set the environment variable as a System, rather than User variable.



4. Select the Advanced tab from the System Properties.
5. Press Environment Variables button. The following screen will appear.



6. Press **New...** button under System variables; the following screen will appear.
Type in **LSFORCEHOST** in the Variable Name input box.

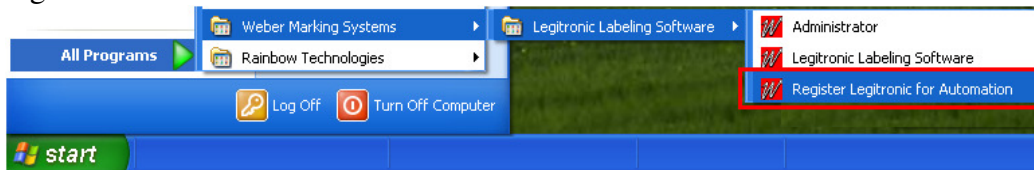


7. Type in *servername* in the Variable Value input box.
 - The *servername* will be the computer name where the network license server was originally loaded.
8. Press the OK button.
9. Close System Properties Window and Run Legitronic® Labeling Software to verify that the PC can attach to the license server.
10. Continue with “**Printer Installation**” section of this booklet, page 24.

Registering Legitronic for Automation

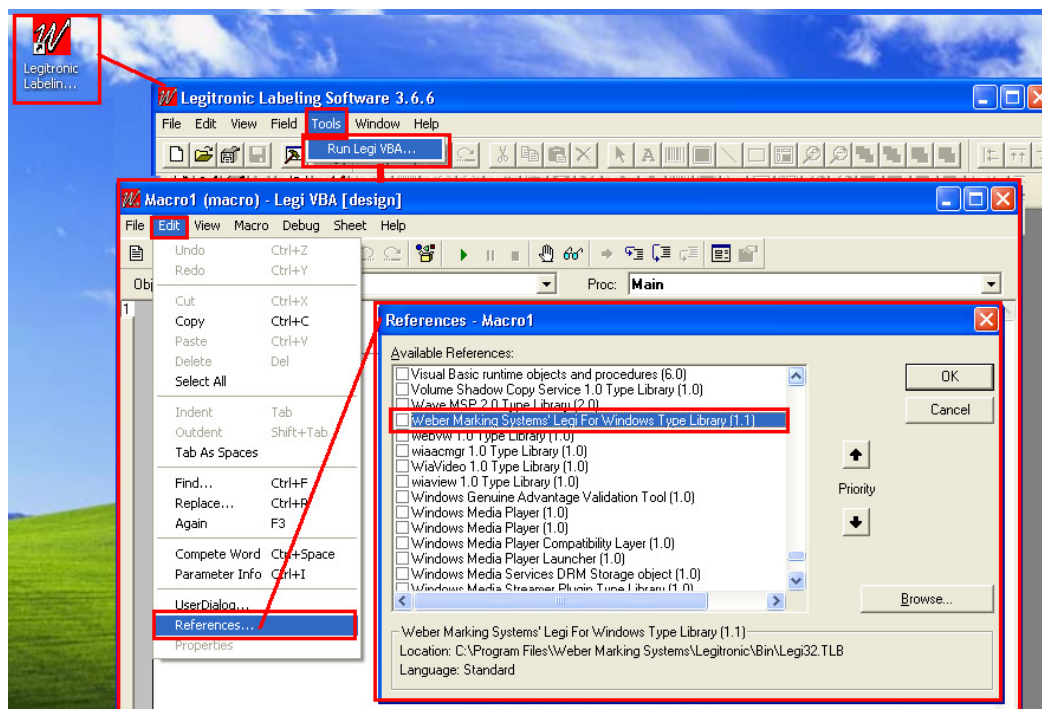
The following steps only need to be performed if Legitronic is going to be controlled by external program written in VBA, Visual Basic, C#. etc.

1. After exiting the software installation by clicking on “Exit Installation” Button, You will want to go to “Start→ Programs→Weber Marking Systems→Legitronic Labeling Software→ and click on “**Register Legitronic for Automation**”. By clicking on this menu selection button will ensure that the automation server is registered.



Verifying the Legitronic Automation Server is Registered

2. Launch the Legitronic Software and click on the following menu buttons; “Tools→ Run Legi VBA→(macro1 window will appear)→ click on **Edit →References...** → then, scroll through the listings of available references till you see: “**Weber Marking Systems’ Legi For Windows Type Library (1.1)**” to check for the application’s registration.

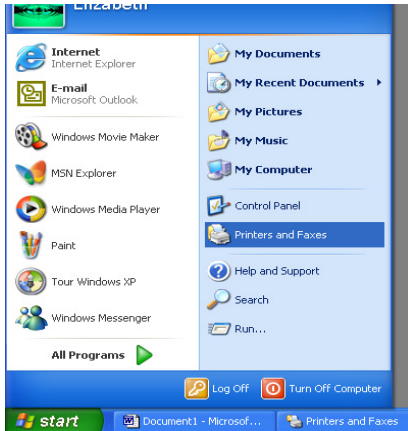


Printer Driver Installation

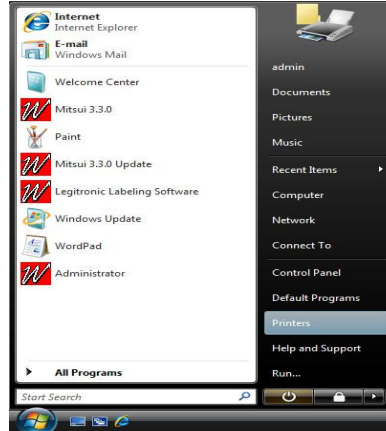
Follow the Manufacturers Manual for the printer installation instructions.

Installing your Windows Print Driver on a Windows XP , VISTA, Windows 7 (32 & 64-bit), Windows Server 2003/2008 computer.

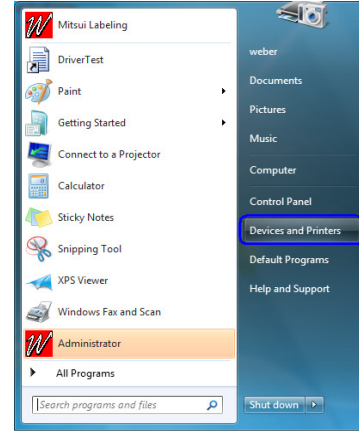
1. Go to the Start Menu, and then press Printers and Faxes(Windows XP),
Printers(VISTA), and/or Devices and Printers(Windows 7) :



Windows XP(32-bit)

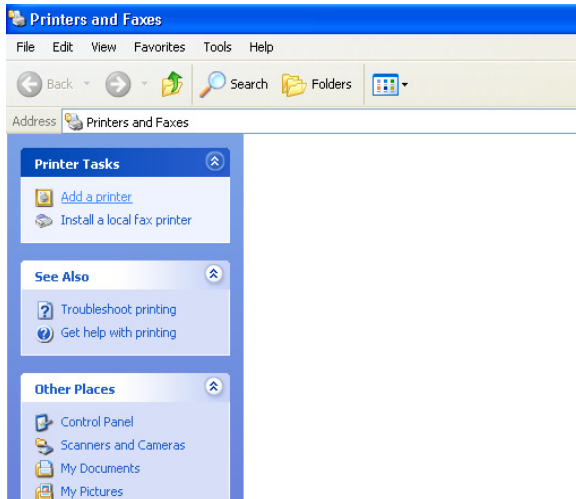


Windows VISTA(32 & 64-bit)

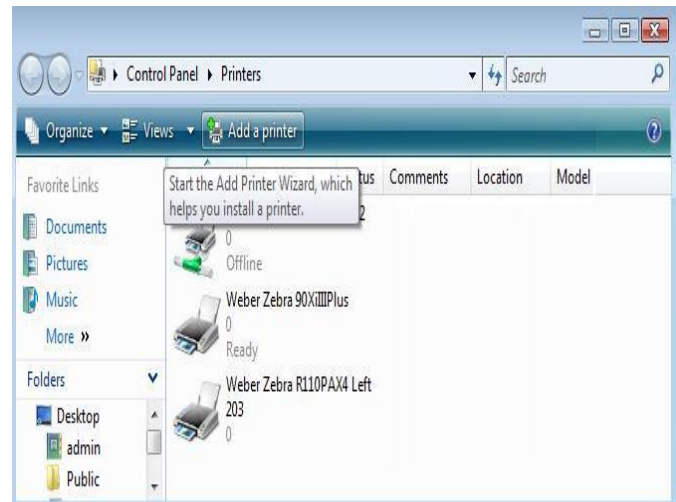


Windows 7 (32 &64-bit)

2. Double-click the Add Printer Icon under Printer Tasks Menu to activate the
Windows Add Printer Wizard.



Windows XP

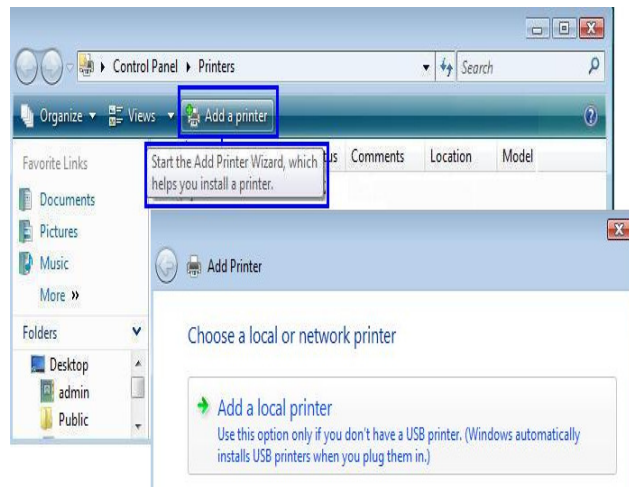


Windows VISTA & 7 (32 & 64-bit)

2. To begin the Installation wizard press Next(for Windows XP) or “Add a Local Printer” (for Windows VISTA & Windows 7, 32 &/or 64-bit) :

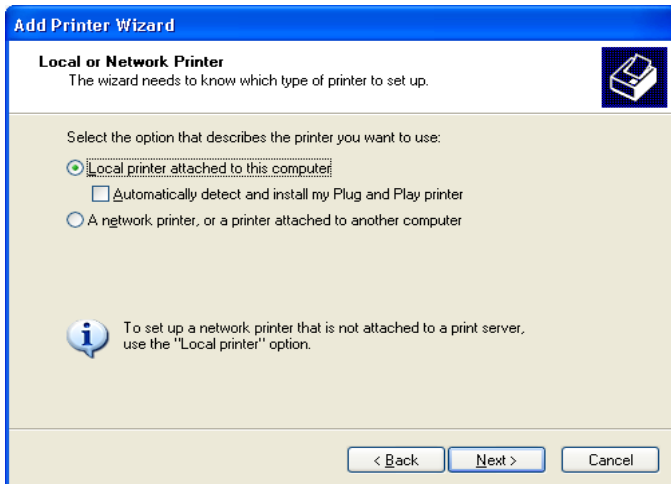


Windows XP

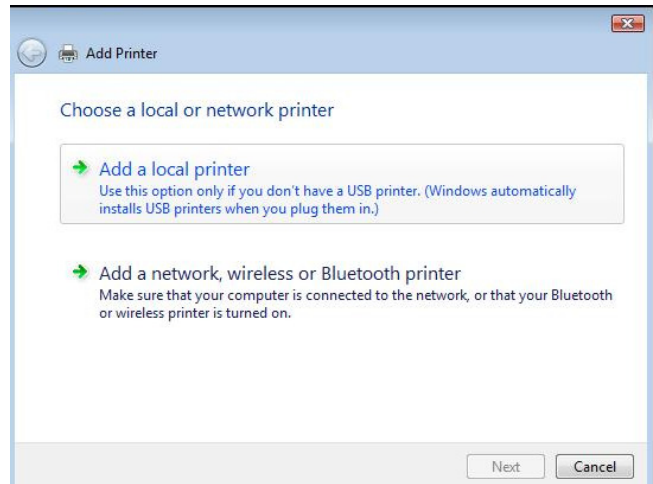


Windows VISTA & 7 (32 & 64-bit)

4. To install a local printer select the Local printer option, then click Next button.

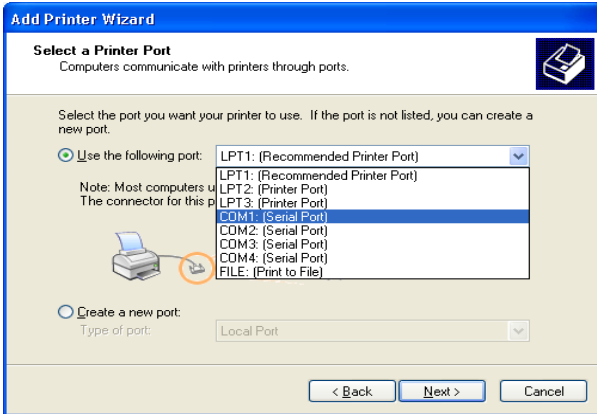


Windows XP

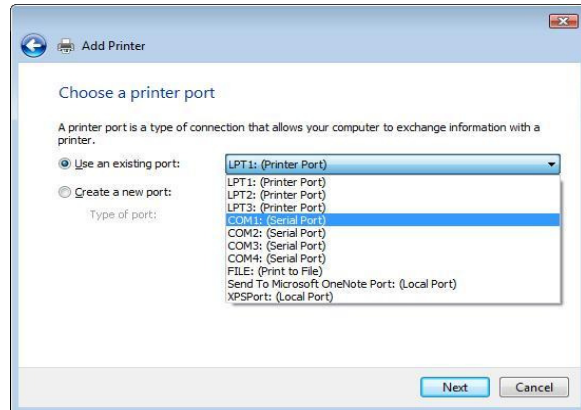


Windows VISTA & 7 (32 & 64-bit)

- From the list of Available ports, select the port that your printer cable is physically connected to. Click the Next button.

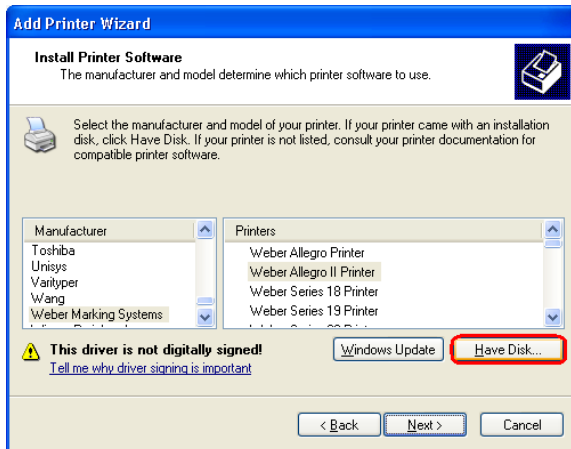


Windows XP

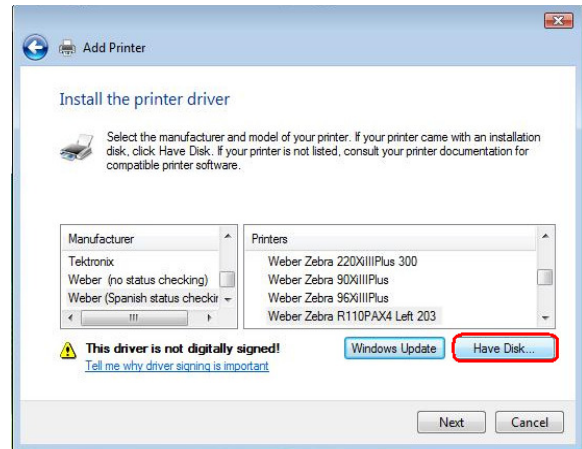


Windows VISTA & 7 (32 & 64-bit)

- Press the Have Disk... button.

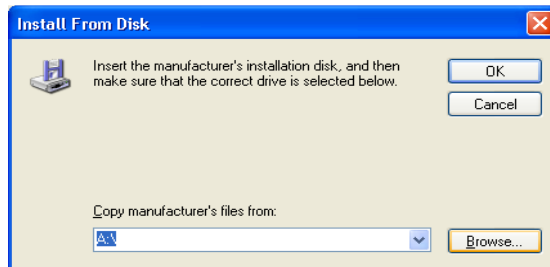


Windows XP



Windows VISTA & 7 (32 & 64-bit)

- Press Browse Button.



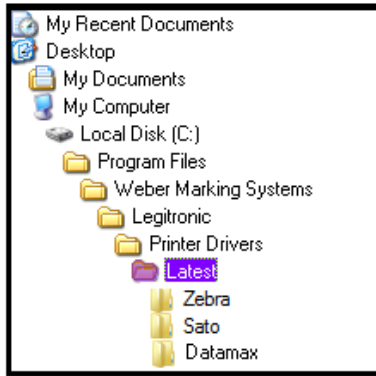
8. Select the following path (*Depending on the type of printer/print-engine you have*), Print Drivers are saved on your Hard Drive :

- ❑ **For Windows XP, VISTA and/or Windows 7 (32-bit)→**

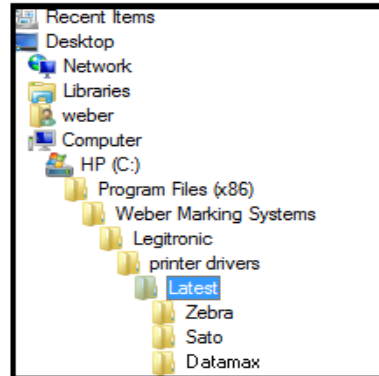
C:\Program Files\Weber Marking Systems\Legitronic\Printer Drivers\Latest\Zebra <or> Sato <or> Datamax

- ❑ **For VISTA and/or Windows 7 (64-bit)→**

C:\Program Files(x86)\Weber Marking Systems\Legitronic\Printer Drivers\Latest\Zebra <or> Sato <or> Datamax-

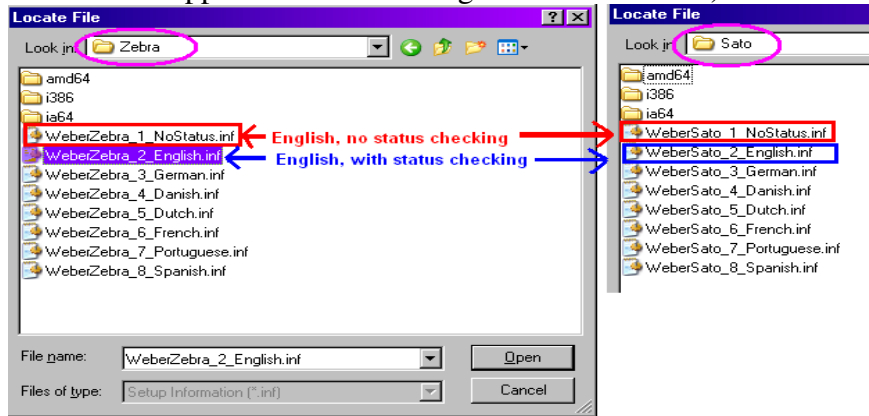


Windows XP/VISTA & 7 (32-bit)



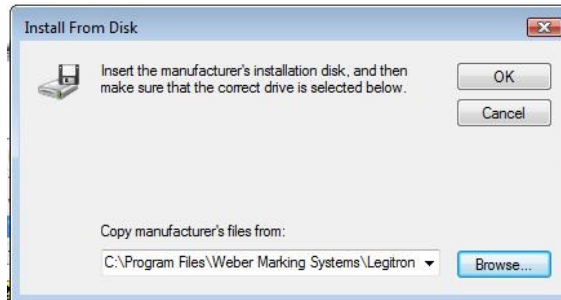
Windows VISTA & 7 (64-bit)

- ❑ Select the desired language. Legitronic supplies a number of foreign languages; i.e.: Danish, Dutch, English, French, German, Portuguese, and Spanish (all of these install “status checking”).
- ❑ **However**, the new configuration includes an **install that does not install “status checking”(NoStatusChecking)**. It is not necessary to disable bi-directional support when this configuration is installed)



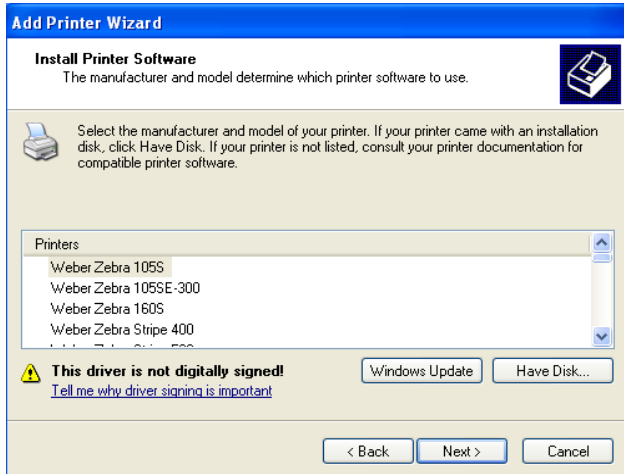
Driver Configuration

9. Your new path will display in the "Copy manufacturer's file from:" box. Click the OK button to continue.

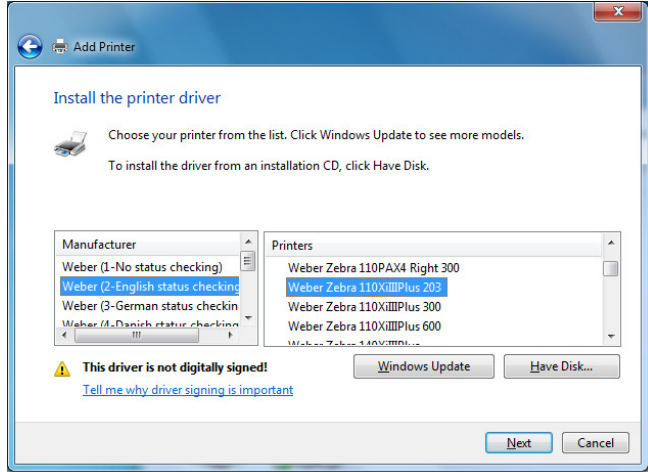


Windows XP, VISTA & 7 (32 &/or 64-bit)

10. Select your Manufacture & Printer by clicking on the appropriate Manufacture(on the left) and Printer(on the right) from the list provided in the dialog box. Press the Next button to continue.



**“LEGACY”(Kernel Mode) Drivers
Windows 2000**

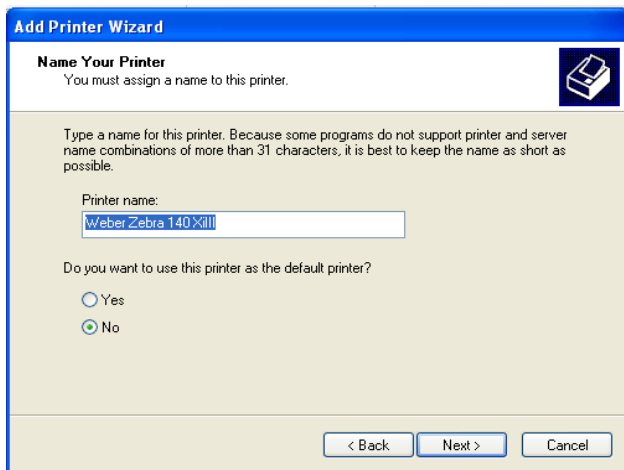


**“LATEST”(User Mode) Drivers
Windows XP, VISTA & 7 (32 & 64-bit)
Windows Server 2003/2008**

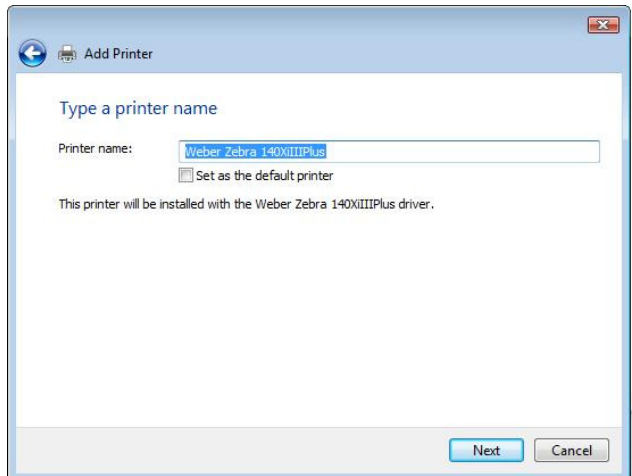
Please note: When installing the “Latest” drivers for Windows XP, VISTA & 7 (32 &/or 64-bit) system, you will have to select the “Manufacture” first on the left-side of the “Install the Printer Driver” screen and then select the “Printer” model type on the right-side, and then click “Next”.

(Selecting the “Manufacture” will effect what type of driver you install being English-no status checking, English-with status checking, or a foreign language(German, Danish, Dutch, French, Portuguese, Spanish)).

11. Your new printer name will be displayed in the "Printer Name" box. Press Next to continue.

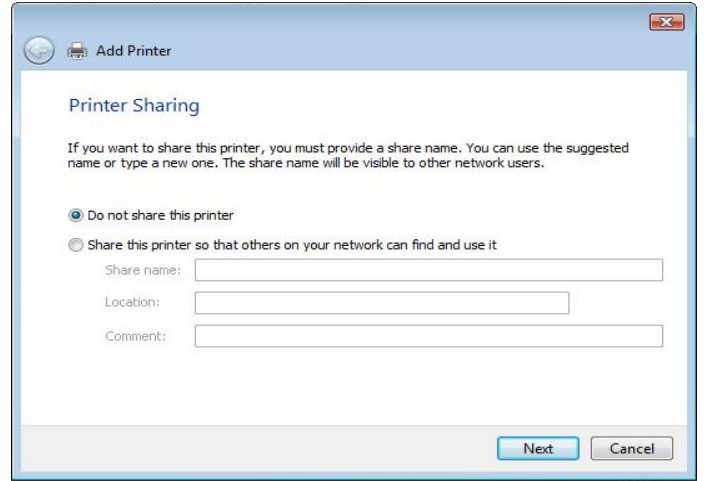
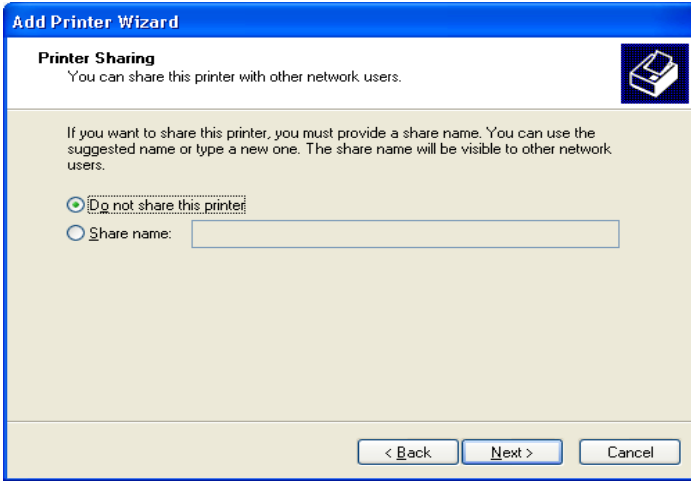


Windows XP



Windows VISTA & 7 (32 & 64-bit)

12. You will be asked if you want to share this printer. If you choose "Do not share this printer", this printer will not be available on the network. If you choose "Share name" option, it will be available on the network. Press Next to

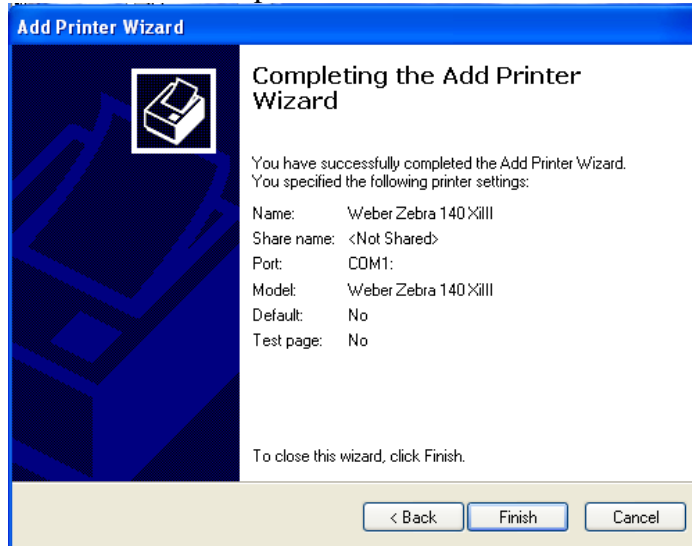


continue.

Windows XP

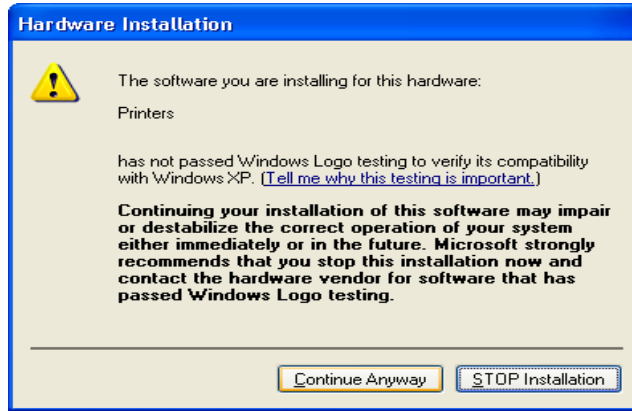
Windows VISTA & 7 (32 & 64-bit)

13. Click the Finish button to complete the Print Driver Installation.

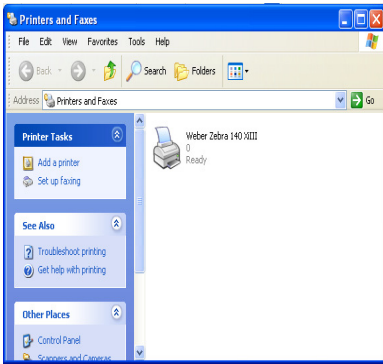


14. Press Continue Anyway to continue installation.

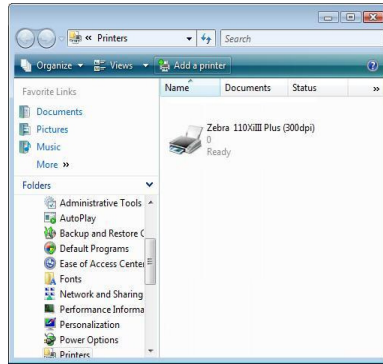
NOTE: At this point you may be asked to locate print driver files, browse to your Installation CD and the folder specified in step 8, page 41.



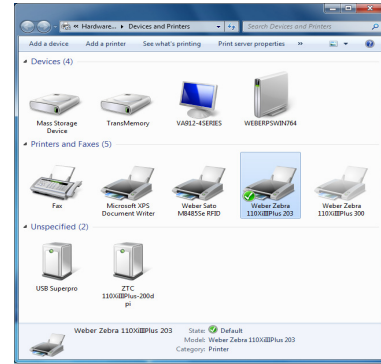
15. Your new driver should now appear in the printers dialog box.



Windows XP



Windows VISTA



Windows 7(32 & 64-bit)

16. Right-click on the newly installed printer.

17. Choose Properties(Windows XP & VISTA) or Printer Properties(Windows 7)

from the quick-pick menu.

18. Click on the **Ports** tab.(Figure 18)

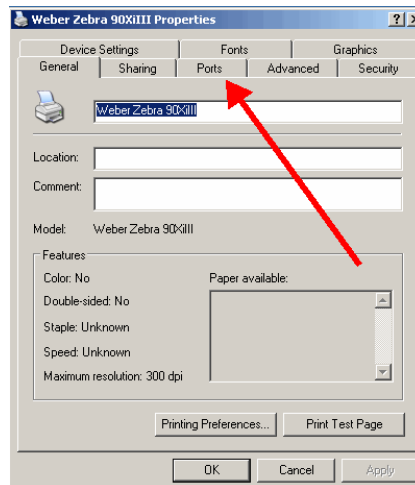


Figure 18

19. **Uncheck** the Enable Bidirectional Support option (near the lower left). (Figure 19)

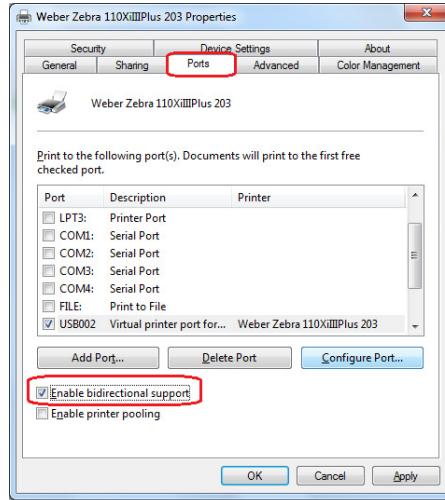


Figure 19

NOTE: If you need to make changes to your port settings click on the Configure Port button, (Figure 19a, b). Ask your IS department if such changes are needed. (The recommended COM1 settings are shown)

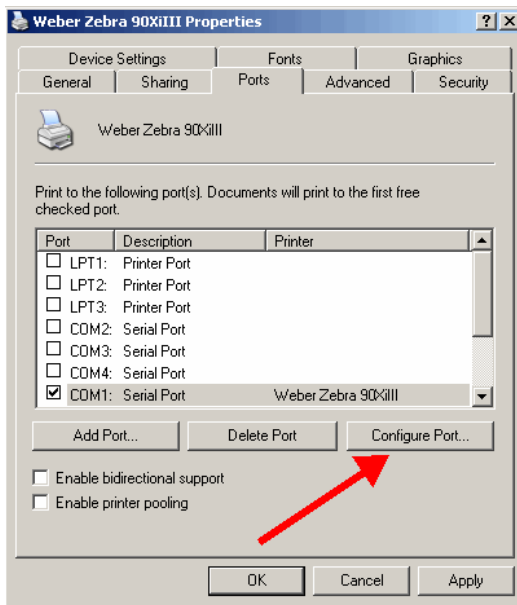


Figure 19a

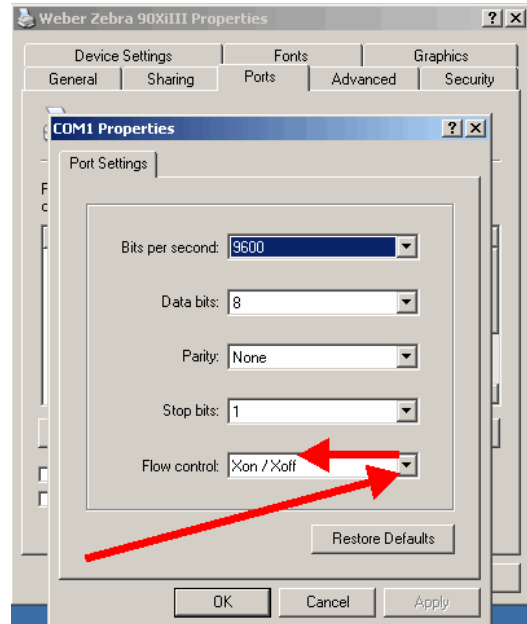


Figure 19b

20. **Printer Properties – “General” Tab – “Preferences Button”** takes you to the Printer’s Preferences window and clicking on the **“Advance Button”** will get you to the **“Document Options”** settings for Darkness, Speed, Label Top Adjustment, Tear-off Setting, Print Rotation, and Repetition(printer or computer repetition) settings as shown in (Figure 20) below:

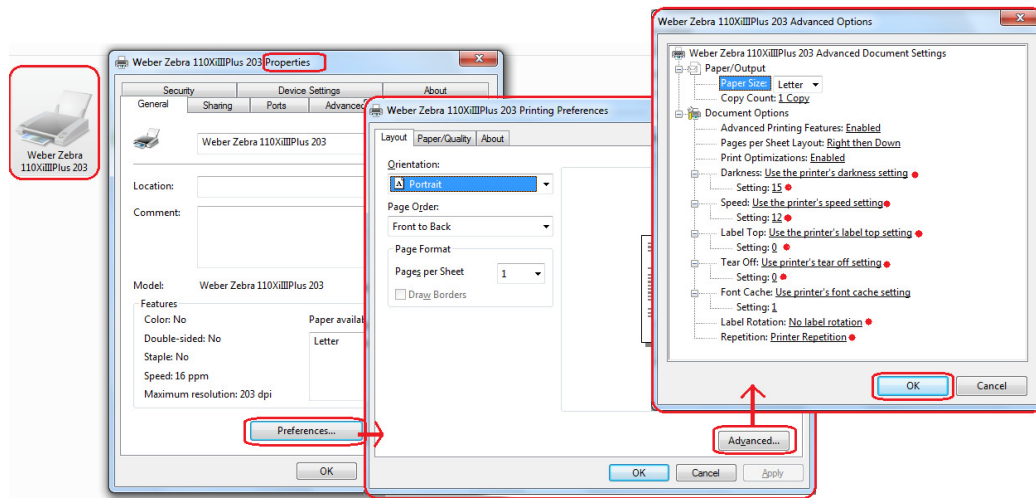


Figure 20

Please note: The initial printer’s printing preferences from installation will be automatically defaulted to “Use the Printer’s Settings” for Darkness, Speed, Label Top and Tear-off. Whatever settings are set on your Printer will drive the outcome of the printouts of your label formats, unless you have specific printer settings in your label design.

21. **Printer Properties – “Device Settings” Tab** - takes you to the printer’s device settings for Label Size, Cutter(if your model printer supports it), Template Memory(if your model printer supports it), and Real-Time Clock (RTC)(if your model printer supports it) settings that can be setup in the driver to send down commands to the printer for each label design if needed, as shown in (Figure 21) below:

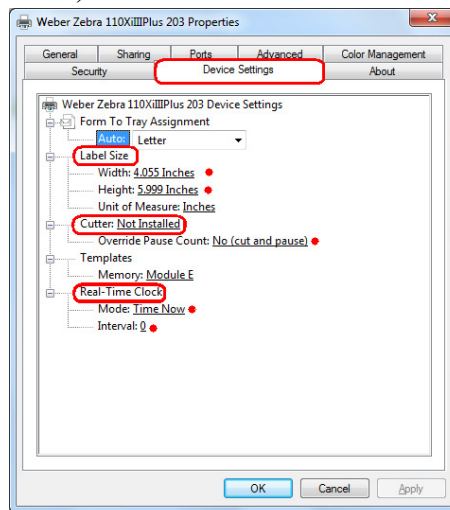


Figure 21

22. Click **OK** to finish setting up your printer. (Figure 21)

Legitronic® Administrative Login

The default Legitronic® Login:

- Name: **weber**
- Password: **legi**

The default login name and password may be changed in Administrator Module and may be accessed by going into Start Menu in Windows than Programs, Weber Marking Systems and Administrator (see pictures below). Please refer to Legitronic® Users Manual for instructions on setting up security. Legitronic® Manual is included on the original Legitronic® Installation CD in User Manual folder.



If you have any problems or questions while following the installation process please call Weber Packaging at 847-364-8500 Ext. 773.

Contact Information:

Phone: 847-364-8500 Ext. 773

Fax: 847-364-8510

E-Mail: legi@weberpackaging.com