



Legitronic® Labeling Software

03/16/2010 VERSION 364



Table of Contents

Check List	3
Hardware Requirements	
Minimum Computer System Requirements	4
Software Installation	
Check for Previously Installed Legitronic® Labeling Software	5
Installing Legitronic® Labeling Software	7
Upgrade of Existing Sentinel Device Driver	12
New Install of Sentinel Device Driver	14
Hardware Key Single User Installation	17
Software Key Single User Installation	18
Software Key Multi User Installation	
Installing a Soft Key License on the Network Server	20
Configuring a Windows XP(32-bit),VISTA/Windows 7 (32-bit & 64-bit), and Windows Server 2003/2008 workstation to address the License Server	24
Printer Installation	
Installing a Windows Print Driver	26
Administrative Login	35

Congratulations on the purchase of your new labeling software from Weber Marking Systems, Inc.

This booklet contains easy to follow step-by-step instructions that will assist you with the complete process of setting up your labeling software.

You have received a box containing the components that are required Legitronic® Labeling Software. Verify that you have received the following before beginning the process.

- Legitronic® Labeling Software CD
- USB License Device (Only for Hardware Key Version)

You are ready to install your new Legitronic® Labeling Software!

Contact Information:

Phone: 847-364-8500 Ext. 773

Fax: 847-364-8510

E-Mail: legi@webermarking.com

Hardware Requirements

Follow the manufacturer's manual for the PC installation instructions.

Minimum Computer System Requirements for Legitronic® Labeling Software

- ❑ Pentium 4 class processor or equivalent
- ❑ Windows 2000 Professional, Windows XP® Professional , Windows VISTA®(32-bit and/or 64-bit), Windows 7®(32-bit and/or 64-bit), Windows Server 2003, Windows Server 2008.
- ❑ 2GB RAM
- ❑ 100 MB Available Hard Disk Space
- ❑ USB Port (*for installing Hardware Key / License Device*)

**Please Note that Legitronic Software v3.6.4 has printer drivers only for Sato & Zebra printers compatible with Windows VISTA(32bit & 64-bit) and Windows 7(32bit & 64-bit).*



Software Installation

If the PC was purchased from Weber Marking Systems, Inc., the software should be preinstalled. To verify that the software is loaded on the PC, follow these steps. (For minimum systems requirements see page 3, Hardware Requirements).

Check for previously installed Legi For Windows

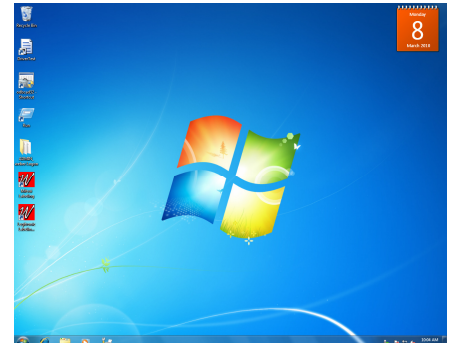
1. Turn on your PC.
2. Locate the Legi for Windows® Icon on your desktop.



Windows XP(32bit)



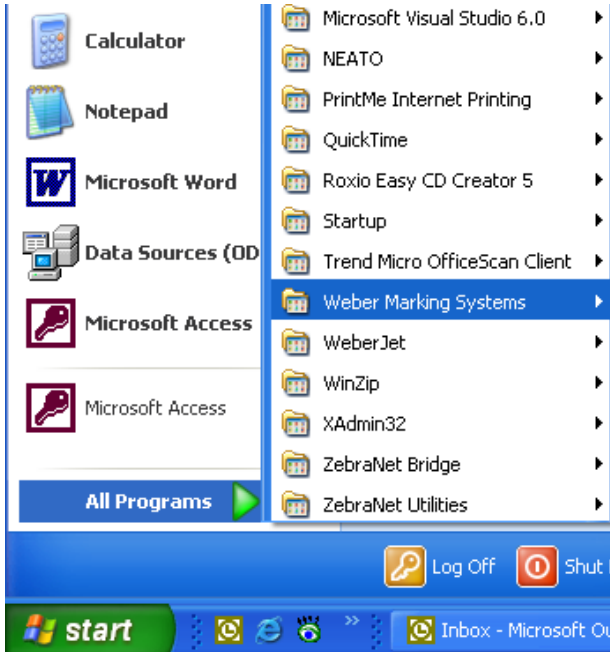
Windows VISTA(32& 64bit)



Windows 7 (32& 64bit)

3. If you have an icon:
 - You will need to uninstall Legi for Windows® continue with step 5
 - If you do not have a Legi for Windows® Software icon continue with step 4.
4. Press your Windows Start button.
 - Select the Programs option from the Start Menu.
 - Locate the Weber Marking Systems Program Group
 - If you have a folder within the Weber Marking Systems Program Group called Legitronic® Labeling Software, the program has been loaded on your system.

- If you do not have a Program Folder or Icon called Legitronic® Labeling Software, proceed to the **Installing** Legitronic® Labeling Software section of this booklet on page 7, see screen below.



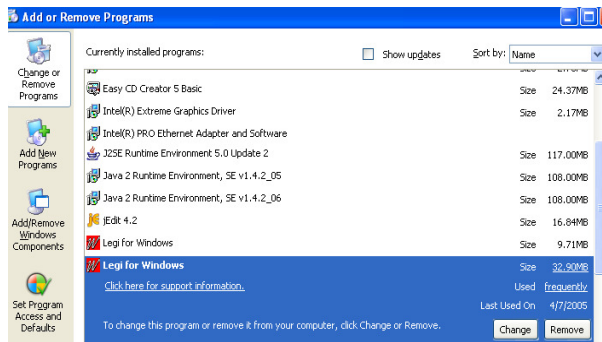
Windows XP (32-bit)



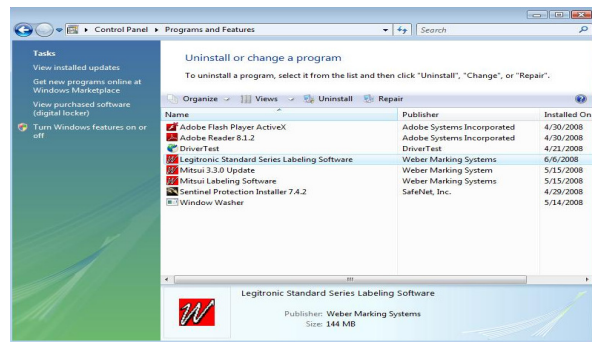
Windows VISTA & 7 (32 & 64-bit)

5. Press your Windows Start button

- Select the Control Panel option from the Start Menu.
- Select the Add or Remove Programs in the Control Panel
- Press the Remove button and remove both Icons



Windows XP(32-bit)



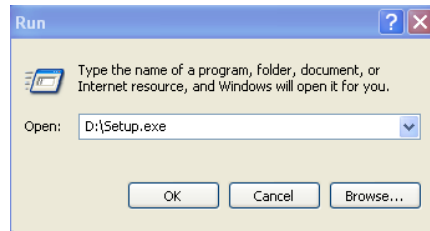
Windows VISTA & 7 (32 & 64-bit)

- When Legi for Windows® is uninstalled continue to **Installing** Legitronic® Labeling Software section of this booklet on page 7

Installing Legitronic® Labeling Software

NOTE: It is important that no other programs are running in the background. Other open programs can interfere with successful installation of Legitronic® Labeling Software. If there are any open programs, press Cancel button to exit the Installation Process. Close all open programs then go back to Step 1 to restart the installation process.

1. Insert the Program CD into your CD-ROM drive. The installation process should start automatically.
 - ❑ If the Install does not begin on its own. Press the Start button, select the Run option and type the following command line:
(Assuming that D:\ is your CD-ROM drive)



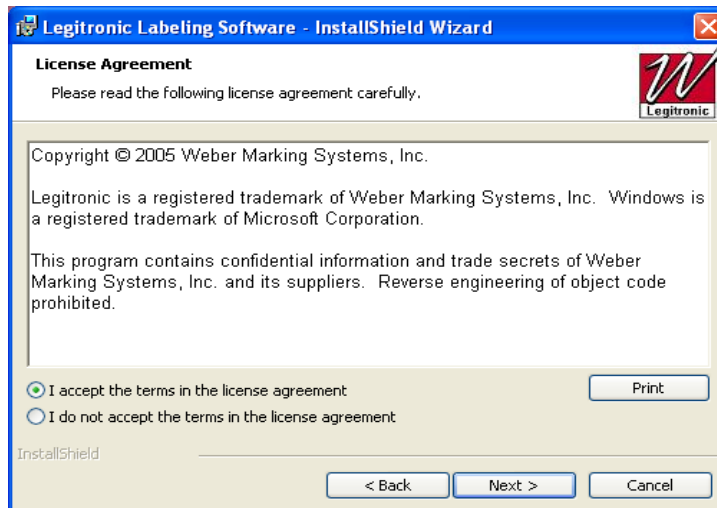
NOTE: The Installer might occasionally reboot your PC during installation. When asked to do so let the PC reboot but do not remove the CD. After rebooting the installation will continue, if not press Start button, select Run option and type "*D:\Setup.exe*" (see screen above).

2. The Installation wizard should appear on the screen

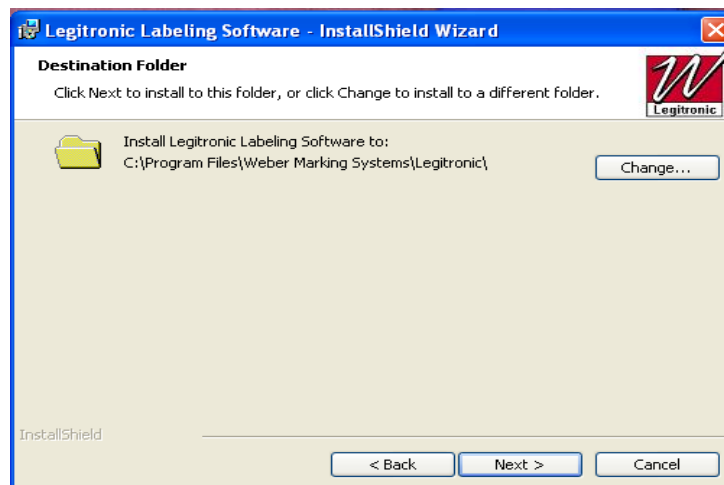


- ❑ Press Next button to install the program or press Exit button to exit the installation.

3. The following screen shows the license agreement. The user must accept the terms and press Next to continue the installation.



4. You are now asked to choose the directory where you would like to install Legitronic® Labeling Software. The default directory for Legitronic® Labeling Software is C:\Program Files\Weber Marking Systems\Legitronic



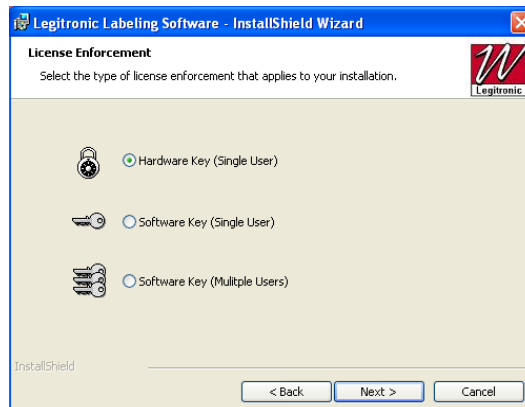
- ❑ To select an alternate directory, press the Change button, and select a new path. Press
- ❑ Next to continue.

5. The next screen will ask you to choose the language Legitronic® Labeling Software will run in.

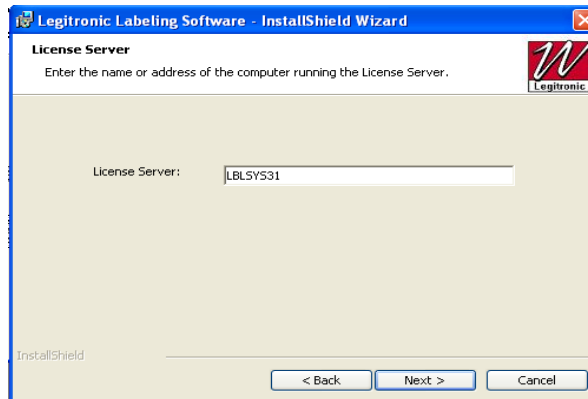


- ❑ To Change the language Click on the scroll down box once you have selected your language press Next to continue
6. The next dialog prompts the user to select the type of the license that has been purchased.

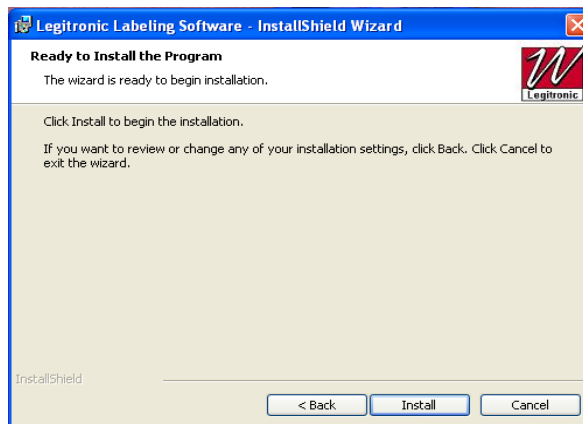
- ❑ **For an Upgrade of an Existing Installed Sentinel Device**
If the Hardware Key Single User has been purchased select Hardware Key Single User option. After completing the installation process refer to “**Upgrading Existing Sentinel Device Driver**” section in this booklet on page 12
- ❑ **For a New Install of Legitronic software & Sentinel Device**
If the Hardware Key Single User has been purchased select Hardware Key Single User option. After completing the installation process refer to “**New Install of Sentinel Device Driver**” section in this booklet on page 14
- ❑ If the Software Key Single User has been purchased select Software Key Single User option. After completing the installation process refer to “**Software Key Single User Installation**” section of this booklet on page 18.
- ❑ If the Software Key Multi User has been purchased select Software Key Multi User option. After completing the installation process refers to “**Software Key Multi User Installation**” section of this booklet on page 20.
- ❑ Select License Type and press Next.



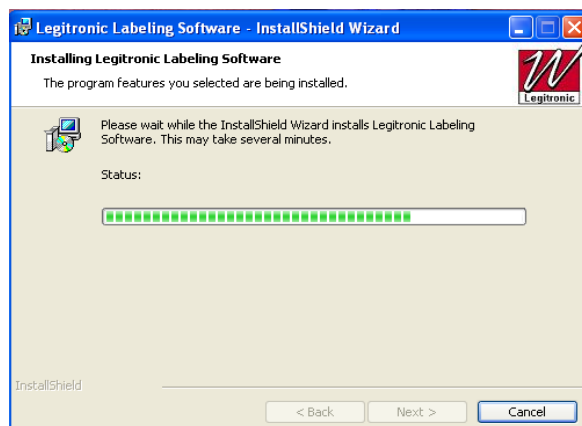
6. If you selected Software Key (Single User or Multi User) a License server screen will appear.
- Type in your Server Computer Name then press Next to continue



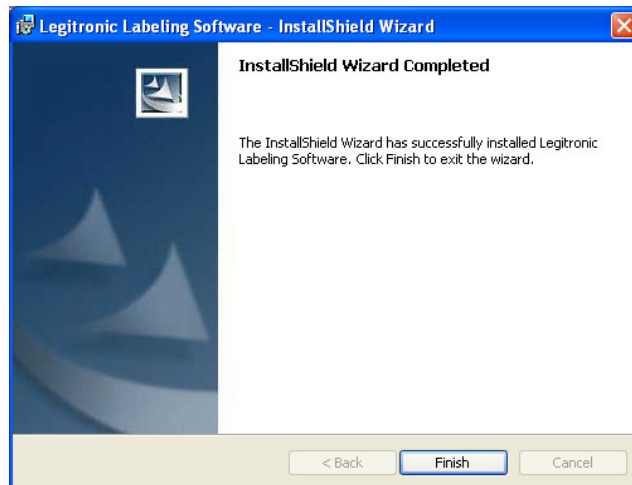
The following dialog will appear. Legitronic® Labeling Software is ready to install the program, press Install.



The following screen will appear and Installation will begin. Press Cancel to cancel the Installation.



The following dialog will appear upon the completion of the installation. Press Finish.



- ❑ At this point you may be asked to reboot.

For an **Upgrade** of an existing install of **Sentinel Device driver**

If you have had a previous version of Legitronic Software v3.6.2 or Older, with an existing install of a Sentinel Device for Hardware key on your PC, then you will need to run through an “upgrade” of the Sentinel Device Driver on your system.

- ❑ Windows XP and Windows VISTA require the Sentinel NT Device Driver installation for proper functionality of the Legitronic® Labeling Software with the hardware key license. Refer to “**Upgrading an Existing Sentinel Device Driver**” section of this booklet on page 12, and continue to the next sections for “**Hardware Key Connection**” on Page 17.

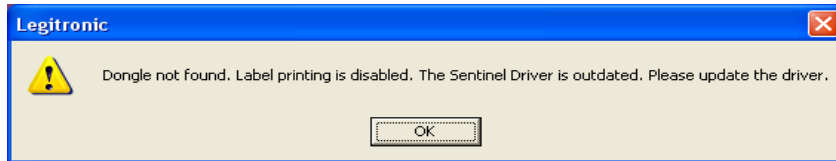
For a **New Install** of Legitronic software & **Sentinel Device driver**

If you have never installed our Legitronic software, so that this is a “fresh new install” from beginning to end, then you will want to run through a “new install” of the Sentinel Device Driver on your system.

- ❑ Windows XP and Windows VISTA require the Sentinel NT Device Driver installation for proper functionality of the Legitronic® Labeling Software with the hardware key license. Refer to “**New Install of Sentinel Device Driver**” section of this booklet on page 14, and continue to the next sections for “**Hardware Key Connection**” on Page 17.

Upgrading Existing Sentinel Device Driver for Windows XP, Windows VISTA & 7

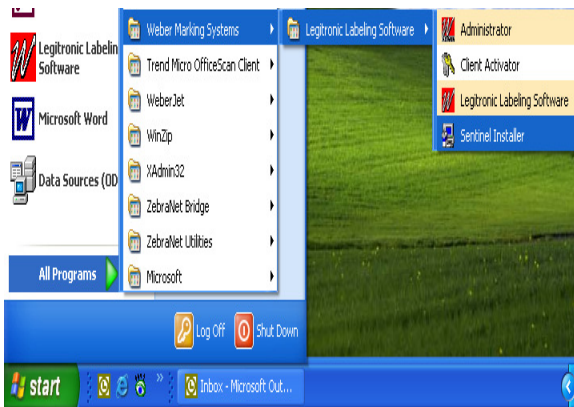
Continue with this section when needing to **upgrade** the **Sentinel Device driver** for hardware key on Windows XP, VISTA, &/or Windows 7



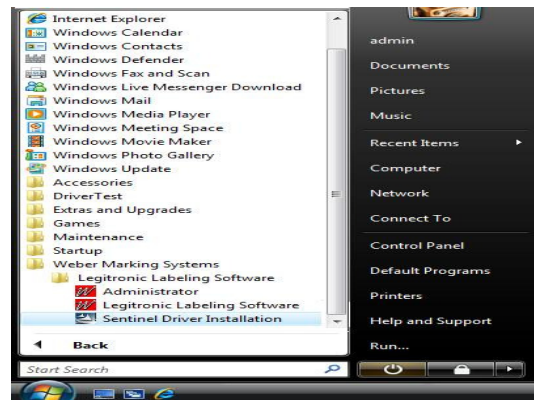
If you had a previous version of Legitronic software of v3.6.2 or Older, you might see/get the above message when launching our Legitronic software. If you get this message you will need to follow the next steps for **upgrading** your **Sentinel Device Driver**.

NOTE: Do NOT Install the Hardware key (Parallel or USB dongle) until the following procedure below is complete.

1. Go to your Windows Start Menu, Programs, Weber Marking Systems, Legitronic® Labeling Software and double click the **Sentinel Installer**.

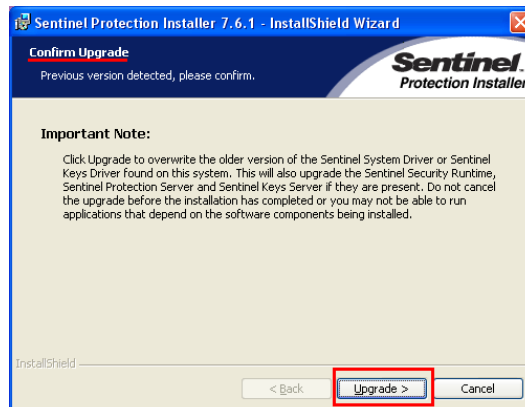


Windows XP (32-bit)

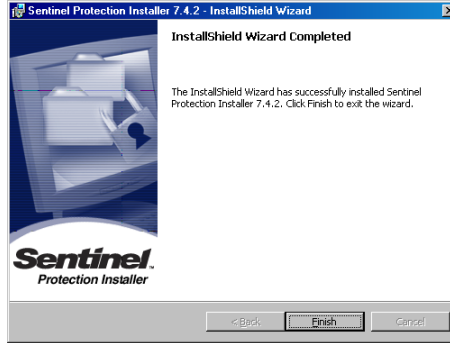


Windows VISTA & 7 (32 & 64-bit)

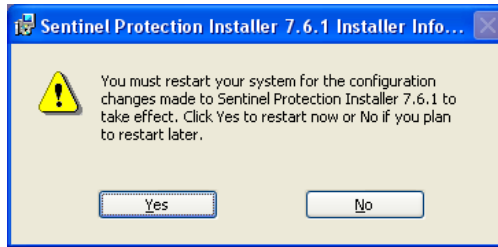
2. The following screen shows the Confirm Upgrade message. The user must accept and press the **Upgrade>** button to continue the upgrade process of the existing Sentinel Driver found on the system.



3. Then follow the rest of the standard prompts that follow and go with the default settings already selected/set for them to complete the upgrade installation of the Sentinel Device Driver.
4. The following dialog will appear upon the completion of the installation. Press Finish



5. On completion of the upgrade of the Sentinel Device Driver, you may get the following Window's msg screen:



You can either click on the “YES” button to restart your system immediately <OR> Click on the “NO” button to restart your system later.

In either case, **you will need to restart your PC** for the update changes to take effects, otherwise you will still get the same error message; *“Dongle not found, Printing is disabled, the Sentinel Device Driver installed is outdated, Please update driver.”*

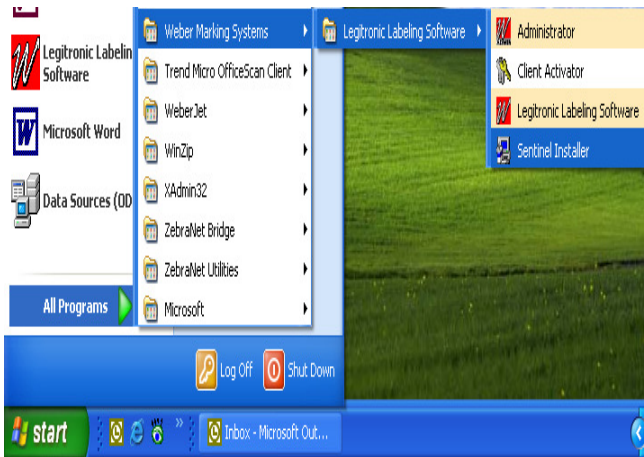
- ❑ If you have purchased the Hardware Key Version of the Legitronic® Labeling Software Windows Software you have the USB Hardware Key included in your Software package. Continue with **“Hardware Key Connection”** on page 17.
- ❑ If you have purchased the Software Key Single User Version of Legitronic® Labeling Software continue with **“Software Key Single User Installation”** section of this booklet on page 18.
- ❑ If you have purchased the Software Key Multi User Version of the Legitronic® Labeling Software, continue with **“Software Key Multi User Installation”** section of this booklet on page 20.

New Install of Sentinel Device Driver for Windows XP, Windows VISTA & 7

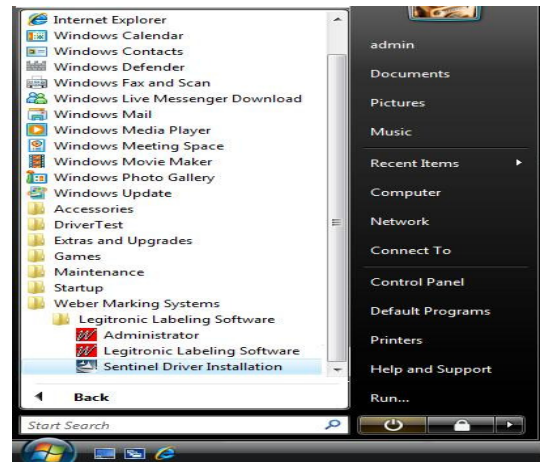
Continue with this section when installing hardware key version on Windows XP, VISTA, &/or Windows 7 for the first time.

NOTE: Do NOT Install the Hardware key (Parallel or USB dongle) until the following procedure below is complete.

1. Go to your Windows Start Menu, Programs, Weber Marking Systems, Legitronic® Labeling Software and double click the **Sentinel Installer**.

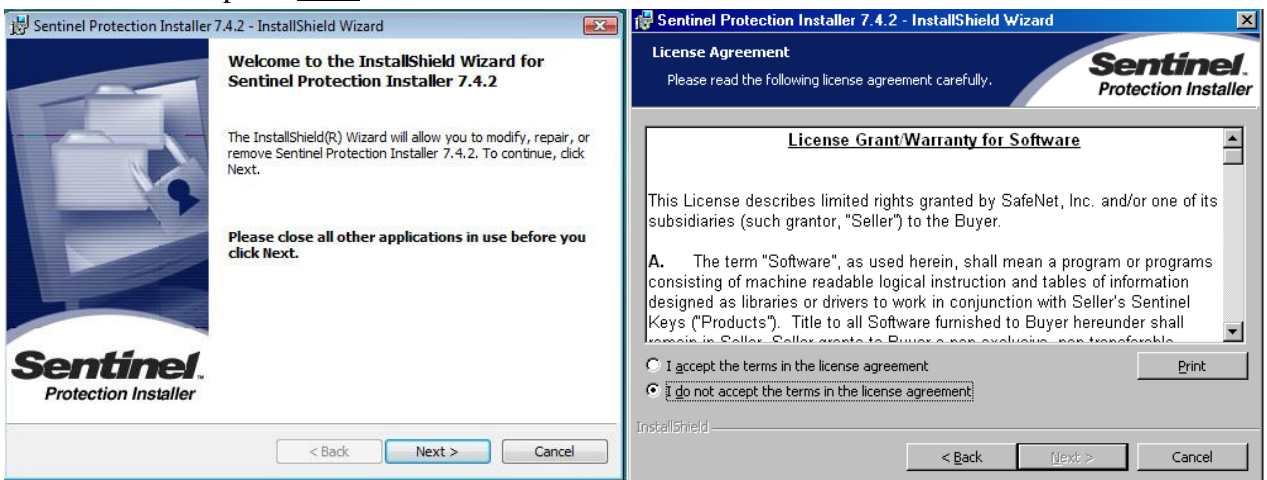


Windows XP (32-bit)



Windows VISTA & 7 (32 & 64-bit)

2. The following screen shows the license agreement. The user must accept the terms and press Next to continue the installation.

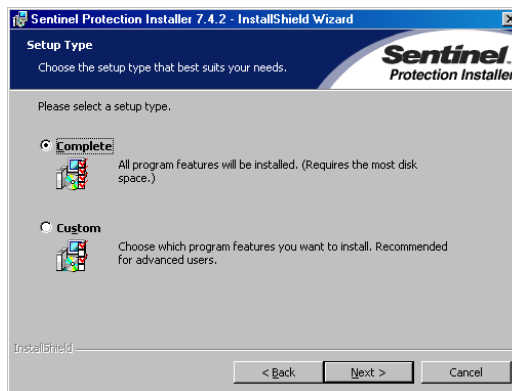


Windows XP(32-bit) & Windows VISTA & 7 (32 & 64-bit)

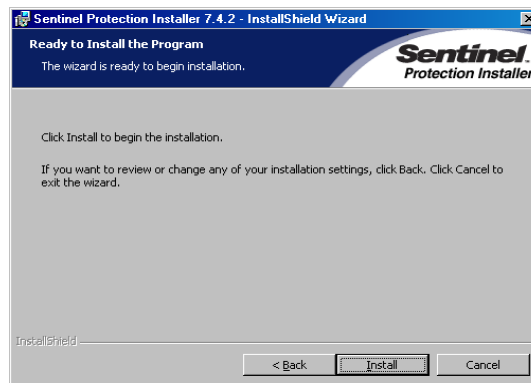
3. If you are asked to choose the directory where you would like to install Sentinel System Driver. The default directory for Sentinel System Driver is <C:\Program Files\Common Files\SafeNet Sentinel\Sentinel System Driver>



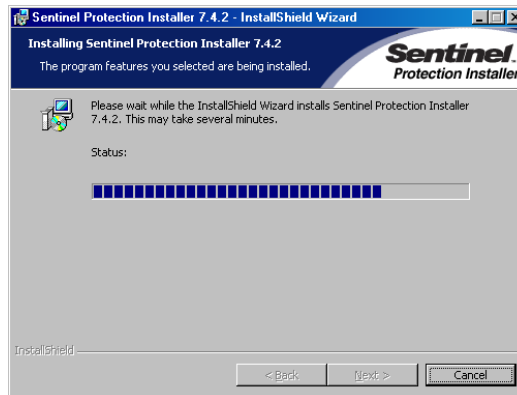
- ❑ To select an alternate directory, press the Change button, and select a new path. Press
 - ❑ Next to continue.
4. The following window will allow you to choose a setup type for the Sentinel Device Driver. Select either Complete or Custom. Then press Next to continue.



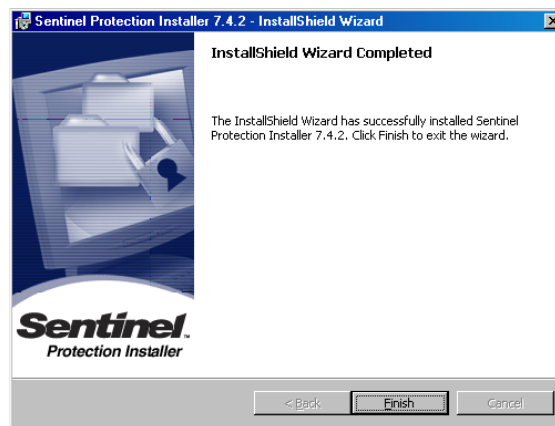
5. The next screen will appear press Install to continue



6. The following screen will appear and Installation will begin. Press Cancel to cancel the Installation.



7. The following dialog will appear upon the completion of the installation. Press Finish.



- ❑ If you have purchased the Hardware Key Version of the Legitronic® Labeling Software Windows Software you have the USB Hardware Key included in your Software package. Continue with “**Hardware Key Connection**” on page 17.
- ❑ If you have purchased the Software Key Single User Version of Legitronic® Labeling Software continue with “**Software Key Single User Installation**” section of this booklet on page 18.
- ❑ If you have purchased the Software Key Multi User Version of the Legitronic® Labeling Software, continue with “**Software Key Multi User Installation**” section of this booklet on page 20.

Hardware Key Connection

- ❑ If you have purchased the **Hardware Key** Version of the Legitronic® Labeling Software you have the Hardware Key included in your Software package.

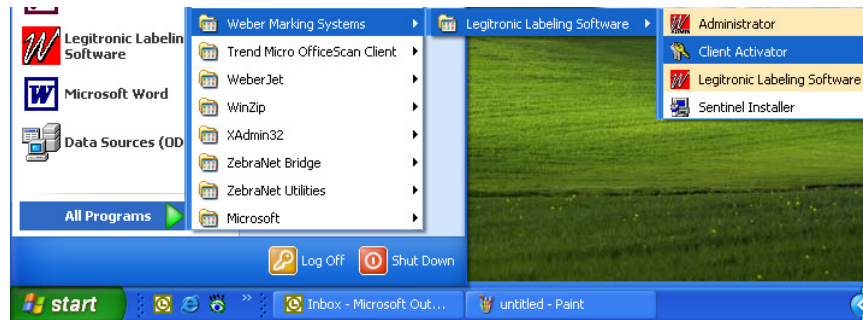
- ❑ Plug the **USB License Device** into a **USB port** on the back or front of your computer

- ❑ Continue with “**Printer Installation**” section of this booklet on page 24.

Software Key Single User Installation

Continue with this section if you have purchased a software key single user version of Legitronic® Labeling Software.

1. Go to Start menu on your desktop; locate Programs group, Weber Marking Systems, Legitronic® Labeling Software and open Client Activator.



- The following screen will appear:



2. Select the Buy Now option button and call Weber Marking Systems at (847) 364-8500 ext.773. The user will be asked the Company's Name, package type, Legitronic® Labeling Software version, and locking code as indicated on the next screen.



3. Enter the License Code provided by Weber Marking Systems Product Specialist.
 - ❑ After you enter the License Code press Next.
 - ❑ Finish the activation process.

4. Restart the Workstation.
 - ❑ Run Legitronic® Labeling Software and verify that the PC finds the license.
 - ❑ Continue with “**Printer Installation**” section of this booklet on page 24.

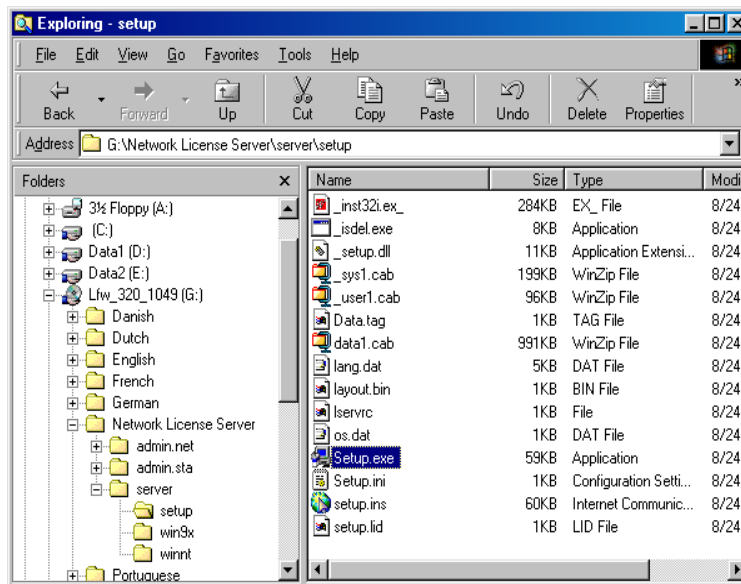
Software Key Multi User Installation.

Continue with this installation if you purchased a multi user license version of Legitronic® Labeling Software.

When the Software Key Network Installation option is selected at installation time the following steps should be performed to complete the installation process. Make sure that you are logged on as administrator before performing the following steps:

Installing a soft key license on the network server

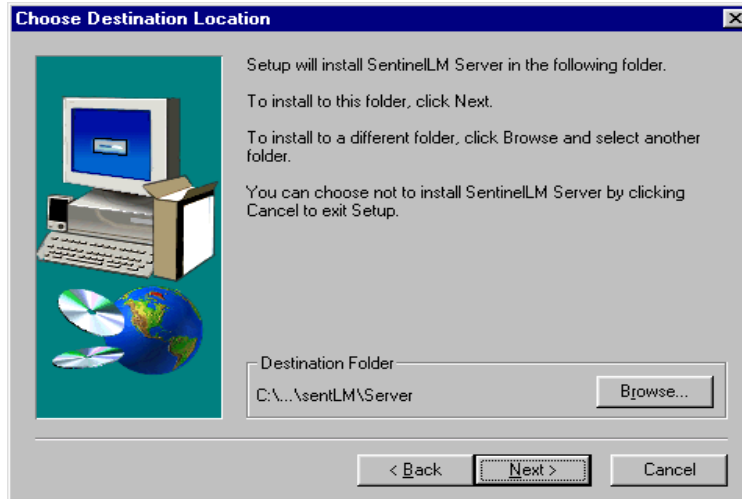
1. On the server run the **SETUP.EXE** from following directory on the Legitronic® Labeling Software CD \Network License Server\server\setup\setup.exe. This will install the License Manager services. (See the screen below)



- Press Next button to continue with the installation of the License Manager.



- The next screen will allow you to change the Destination Folder, to continue press Next.



NOTE: The Status of SentinelLM® should be running at all times that Legi For Windows® is used, if you Exit the SentinelLM® your Labeling Software will not function.

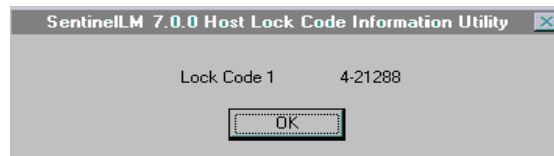
- If the installation of SentinelLM® is successful the following screen will appear. It will inform the user of the status of License Manager.



To Exit the License Manager go to File and Exit on the main menu.

Installing Number Of Users

1. From a DOS prompt run **ECHOID.EXE** from the \Network License Server\admin.net\win32 directory on the Legitronic® Labeling Software CD and get the locking code for the network server.



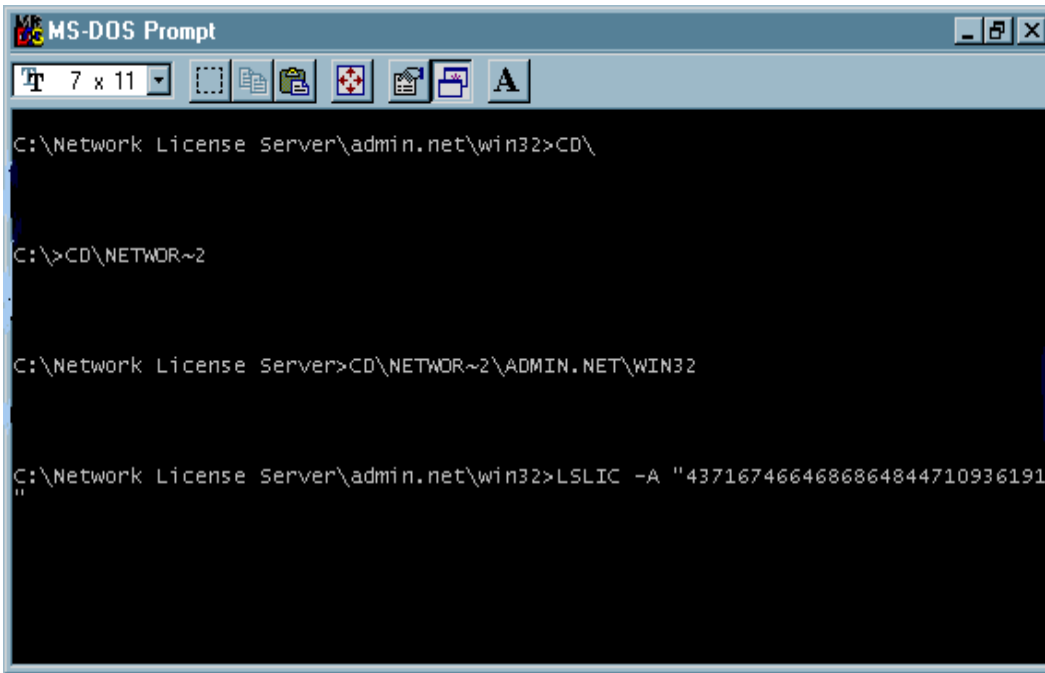
2. From the DOS prompt, set the **LSHOST** environment variable equal to the computer name. Use following syntax:

Set lhost=*computername*

3. Still in the DOS window, change your directory to \Network License Server\admin.net\win32 on your network drive.
4. Call Weber Marking Systems at (847) 364-8500 ext.773 and supply the Company's Name, package type, and locking code.
6. To add the license number, type the following command line:

Lslic -A "*license number*"

License number entered within the quotes will be the number given to you by Weber Marking Systems. See Screen below.



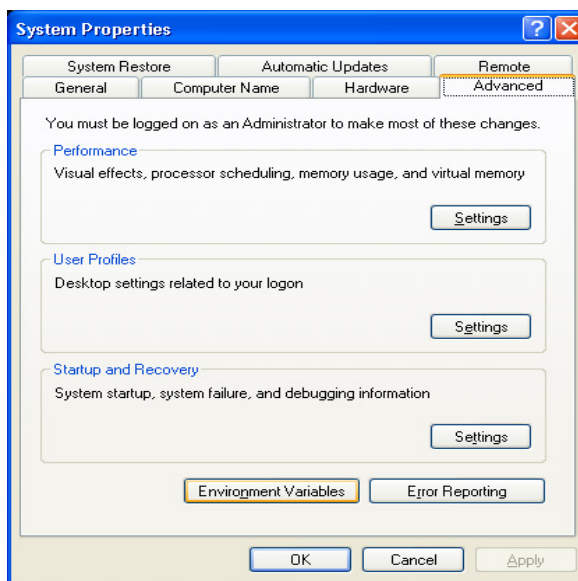
```
MS-DOS Prompt
7 x 11
C:\Network License Server\admin.net\win32>CD\
C:\>CD\NETWOR~2
C:\Network License Server>CD\NETWOR~2\ADMIN.NET\WIN32
C:\Network License Server\admin.net\win32>LSLIC -A "4371674664686864844710936191"
```

- If you are installing Legitronic® Labeling Software on a Windows XP &/or VISTA computer refer to **“Configuring a Windows XP &/or VISTA Workstation to address the license server”** section of this booklet on page 22.

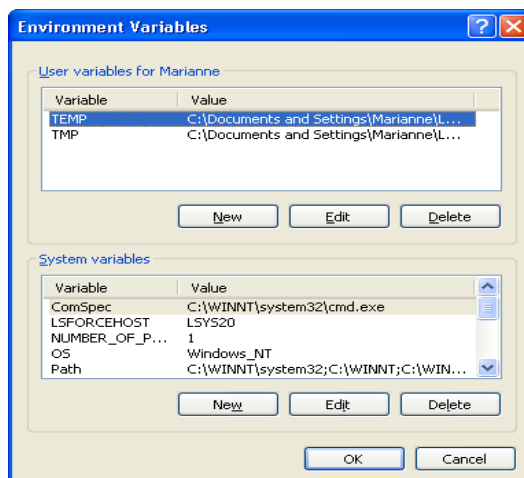
Configuring a Windows XP(32-bit) ,VISTA/Windows 7(32 & 64-bit) and Windows Server 2003/2008 Workstation to address the license server.

1. Make sure that Legitronic® Labeling Software is installed on the PC.
2. Right click on the My Computer icon on the desktop.
3. Select Properties from the popup menu.

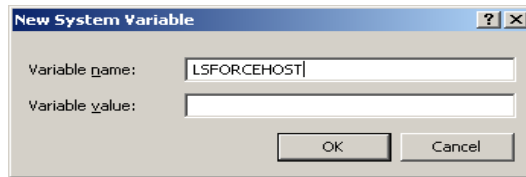
Note: If different users will run Legitronic® Labeling Software, you should sign on as administrator. This way you can set the environment variable as a System, rather than User variable.



4. Select the Advanced tab from the System Properties.
5. Press Environment Variables button. The following screen will appear.



6. Press **New...** button under System variables; the following screen will appear. Type in **LSFORCEHOST** in the Variable Name input box.



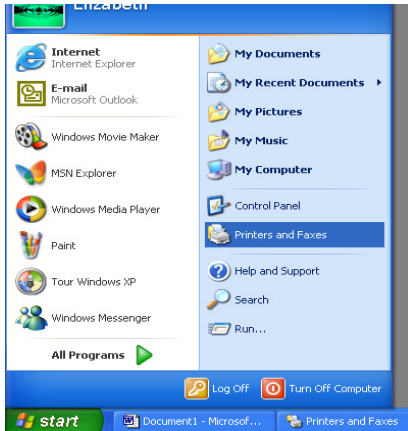
7. Type in *servername* in the Variable Value input box.
 - The *servername* will be the computer name where the network license server was originally loaded.
2. Press the OK button.
3. Close System Properties Window and Run Legitronic® Labeling Software to verify that the PC can attach to the license server.
4. Continue with “**Printer Installation**” section of this booklet, page 24.

Printer Driver Installation

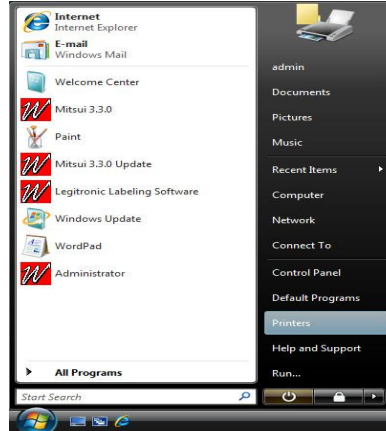
Follow the Manufacturers Manual for the printer installation instructions.

Installing your Windows Print Driver on a Windows XP , VISTA, Windows 7 (32 & 64-bit), Windows Server 2003/2008 computer.

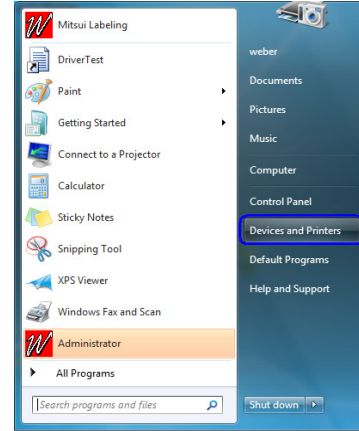
1. Go to the Start Menu, and then press Printers and Faxes(Windows XP),
Printers(VISTA), and/or Devices and Printers(Windows 7) :



Windows XP(32-bit)

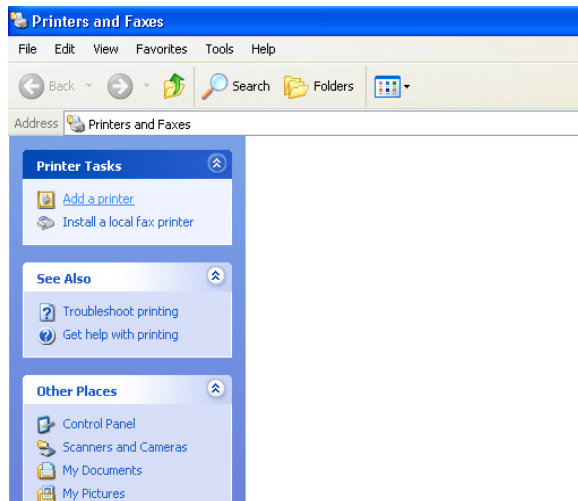


Windows VISTA(32 & 64-bit)

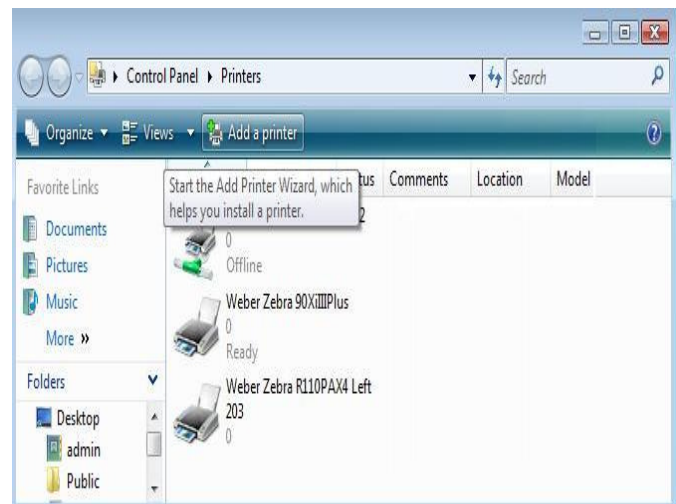


Windows 7 (32 &64-bit)

2. Double-click the Add Printer Icon under Printer Tasks Menu to activate the
Windows Add Printer Wizard.



Windows XP

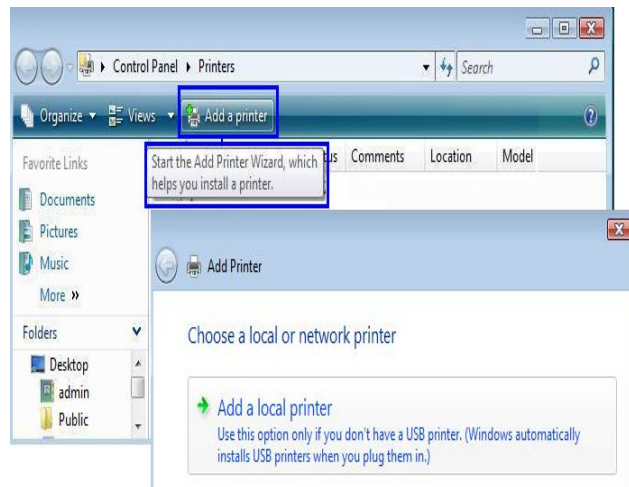


Windows VISTA & 7 (32 & 64-bit)

2. To begin the Installation wizard press Next(for Windows XP) or “Add a Local Printer” (for Windows VISTA & Windows 7, 32 &/or 64-bit) :

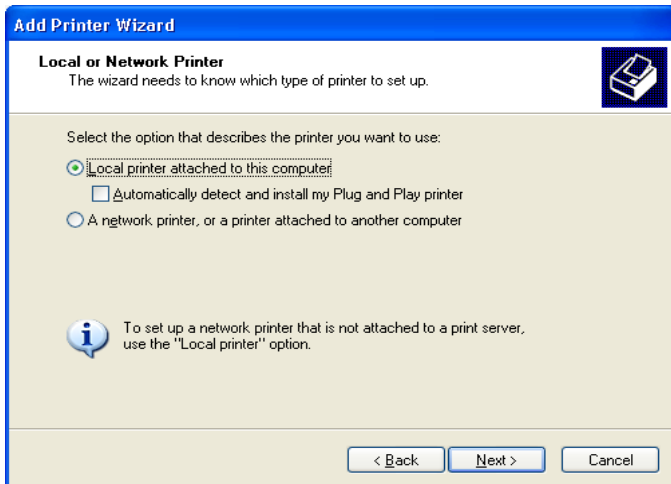


Windows XP

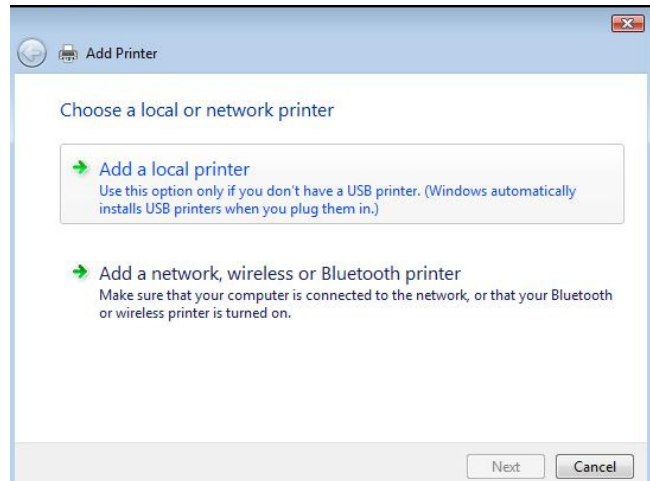


Windows VISTA & 7 (32 & 64-bit)

4. To install a local printer select the Local printer option, then click Next button.

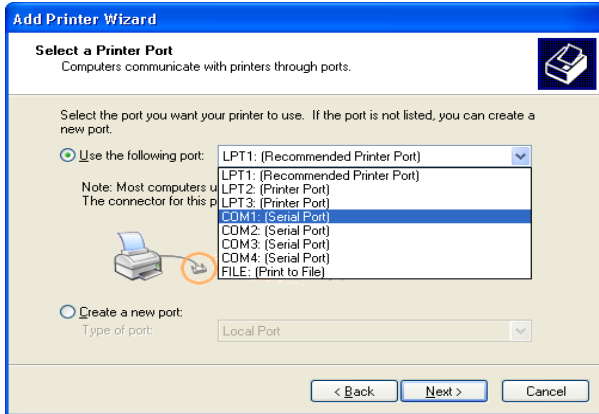


Windows XP

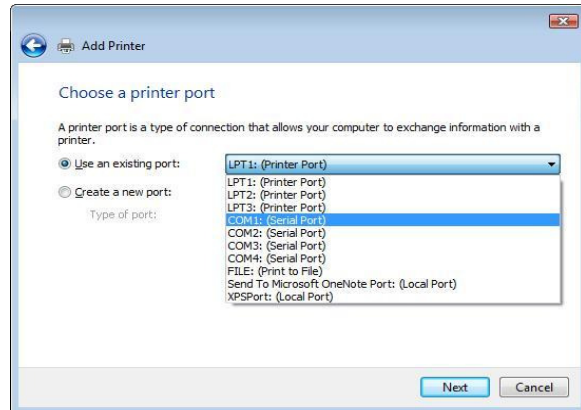


Windows VISTA & 7 (32 & 64-bit)

- From the list of Available ports, select the port that your printer cable is physically connected to. Click the Next button.

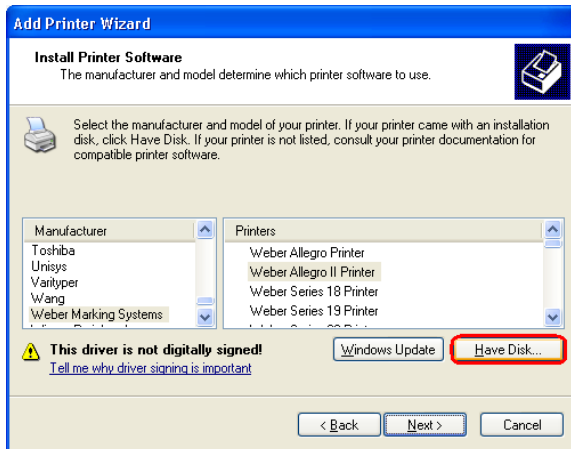


Windows XP

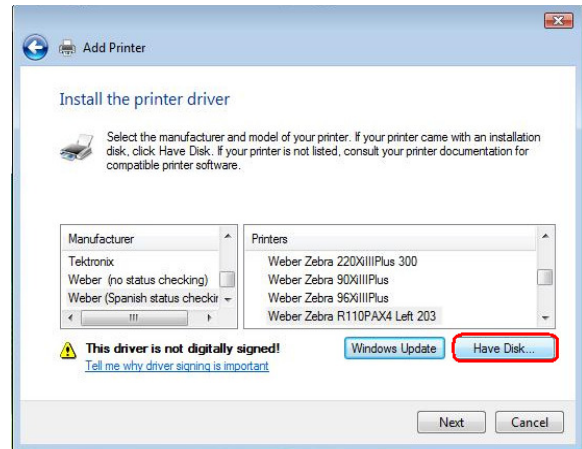


Windows VISTA & 7 (32 & 64-bit)

- Press the Have Disk... button.

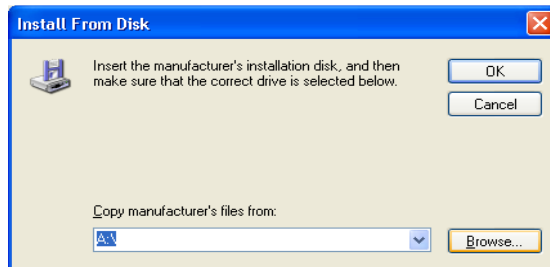


Windows XP



Windows VISTA & 7 (32 & 64-bit)

- Press Browse Button.

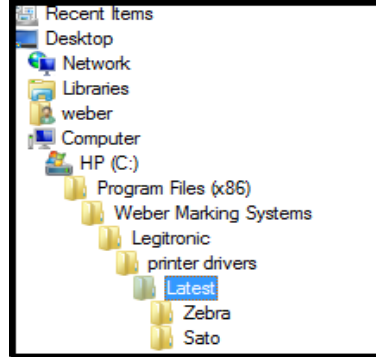


8. Select the following path (*Depending on the type of printer/print-engine you have*), Print Drivers are saved on your Hard Drive :
- ❑ **For Windows XP, VISTA and/or Windows 7 (32-bit) →**
C:\Program Files\Weber Marking Systems\Legitronic\Printer Drivers\Latest\Zebra <or> Sato

- ❑ **For VISTA and/or Windows 7 (64-bit) →**
C:\Program Files(x86)\Weber Marking Systems\Legitronic\Printer Drivers\Latest\Zebra <or> Sato

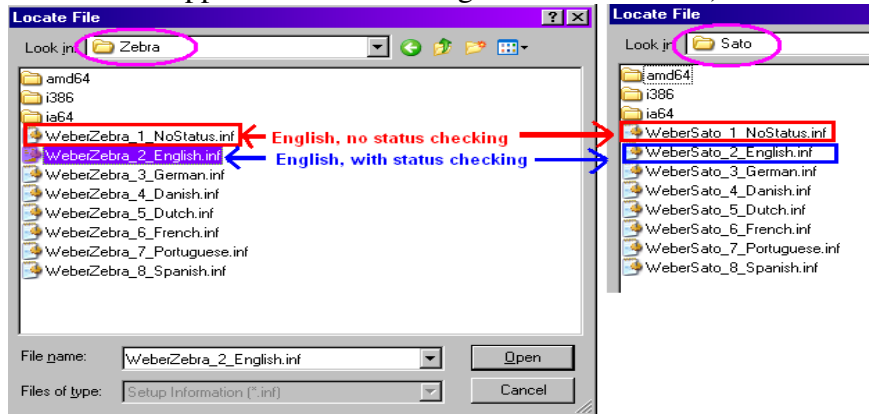


Windows XP/VISTA & 7 (32-bit)



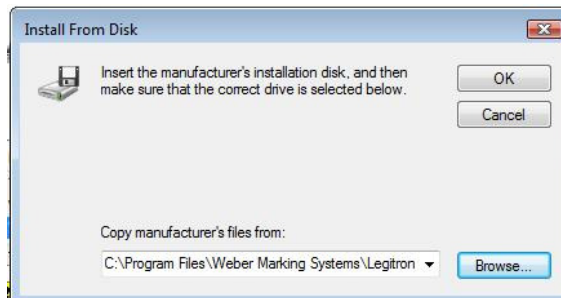
Windows VISTA & 7 (64-bit)

- ❑ Select the desired language. Legitronic supplies a number of foreign languages; i.e.: Danish, Dutch, English, French, German, Portuguese, and Spanish (all of these install “status checking”).
- ❑ **However**, the new configuration includes an **install that does not install “status checking”(NoStatusChecking)**. It is not necessary to disable bi-directional support when this configuration is installed)



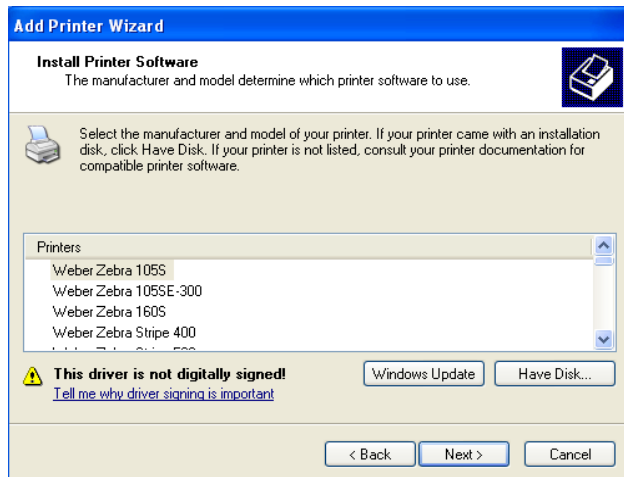
Driver Configuration

9. Your new path will display in the "Copy manufacturer's file from:" box. Click the OK button to continue.

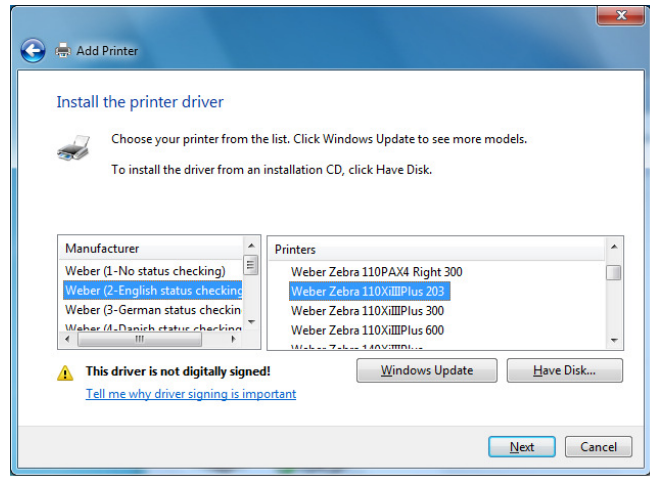


Windows XP, VISTA & 7 (32 &/or 64-bit)

10. Select your Manufacture & Printer by clicking on the appropriate Manufacture(on the left) and Printer(on the right) from the list provided in the dialog box. Press the Next button to continue.



**“LEGACY”(Kernel Mode) Drivers
Windows 2000**

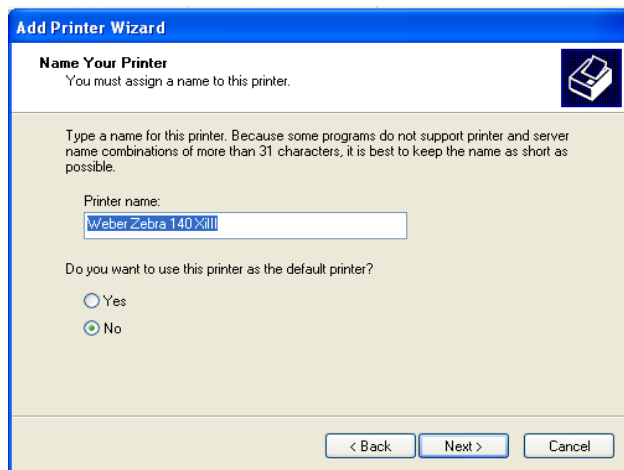


**“LATEST”(User Mode)Drivers
Windows XP,VISTA & 7 (32 & 64-bit)
Windows Server 2003/2008**

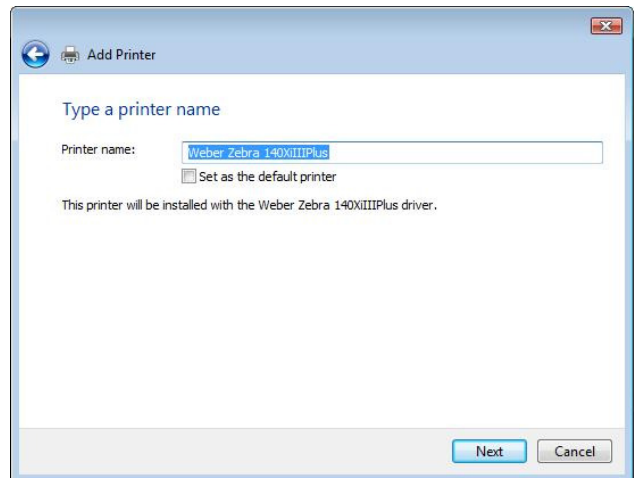
Please note: When installing the “Latest” drivers for Windows XP, VISTA & 7 (32 &/or 64-bit) system, you will have to select the “Manufacture” first on the left-side of the “Install the Printer Driver” screen and then select the “Printer” model type on the right-side, and then click “Next”.

(Selecting the “Manufacture” will effect what type of driver you install being English-no status checking, English-with status checking, or a foreign language(German, Danish, Dutch, French, Portuguese, Spanish)).

11. Your new printer name will be displayed in the "Printer Name" box. Press Next to continue.

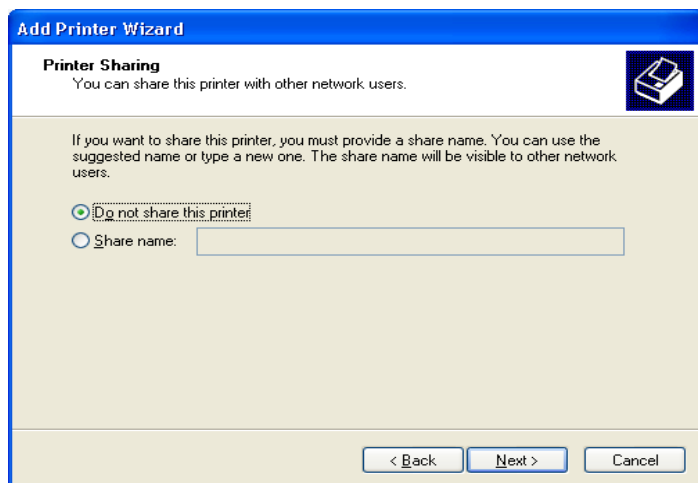


Windows XP

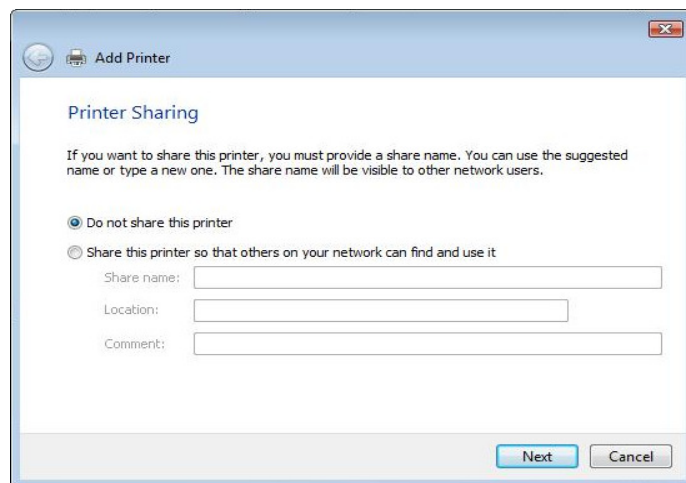


Windows VISTA & 7 (32 & 64-bit)

12. You will be asked if you want to share this printer. If you choose "Do not share this printer", this printer will not be available on the network. If you choose "Share name" option, it will be available on the network. Press Next to continue.

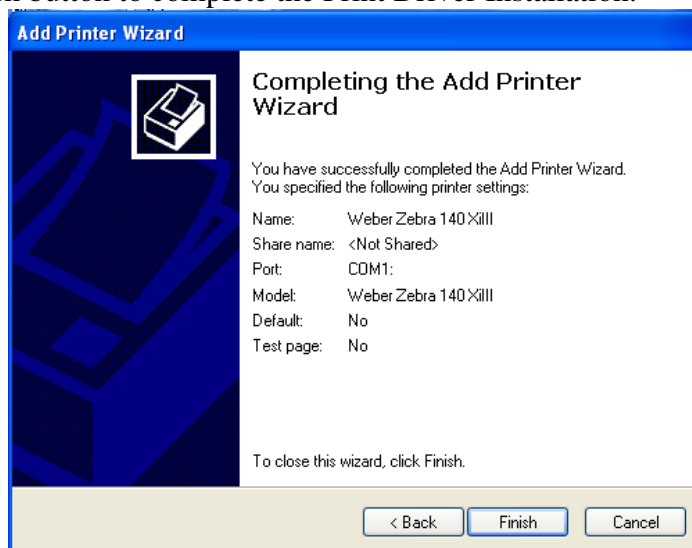


Windows XP



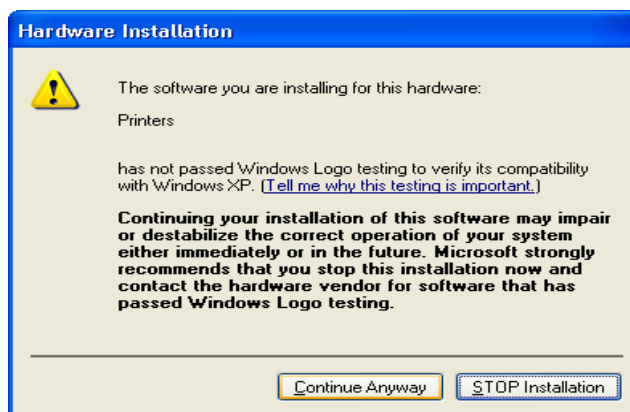
Windows VISTA & 7 (32 & 64-bit)

13. Click the Finish button to complete the Print Driver Installation.

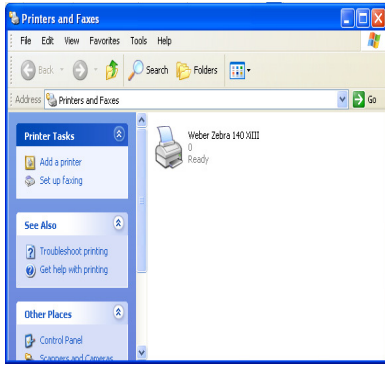


14. Press Continue Anyway to continue installation.

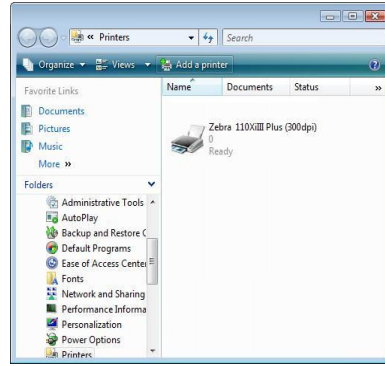
NOTE: At this point you may be asked to locate print driver files, browse to your Installation CD and the folder specified in step 8, page 41.



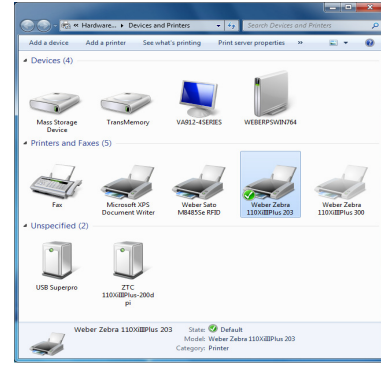
15. Your new driver should now appear in the printers dialog box.



Windows XP



Windows VISTA



Windows 7(32& 64-bit)

16. Right-click on the newly installed printer.
17. Choose Properties(Windows XP & VISTA) or Printer Properties(Windows 7) from the quick-pick menu.
18. Click on the **Ports** tab.(Figure 18)

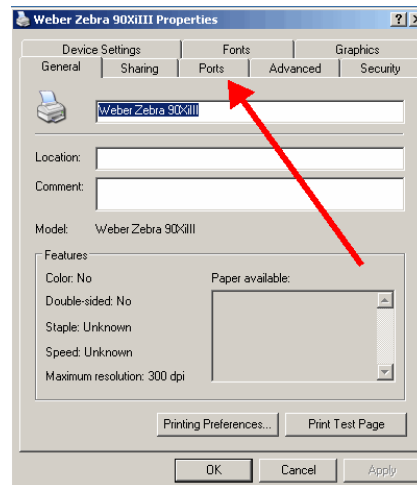


Figure 18

19. **Uncheck** the Enable Bidirectional Support option (near the lower left). (Figure 19)

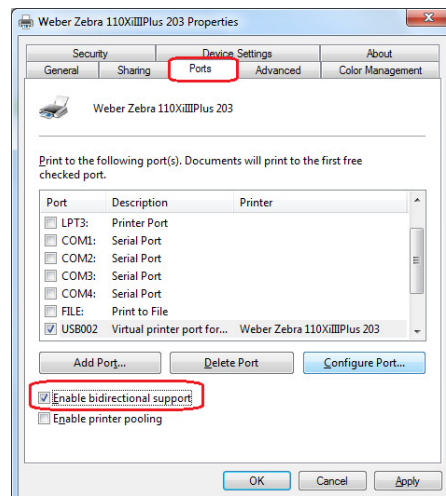


Figure 19

NOTE: If you need to make changes to your port settings click on the Configure Port button, (Figure 19a, b). Ask your IS department if such changes are needed. (The recommended COM1 settings are shown)

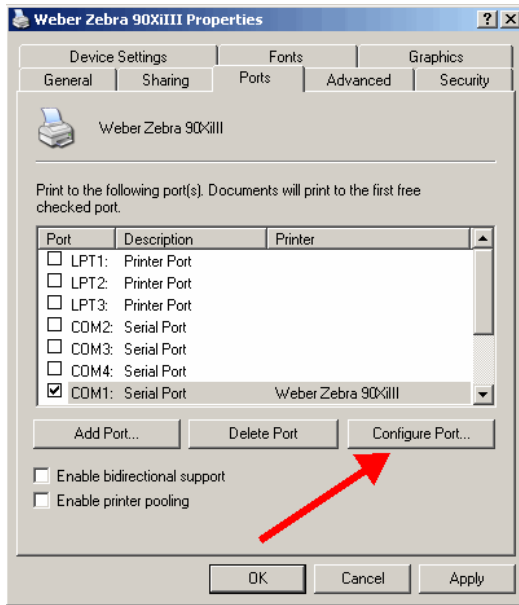


Figure 19a

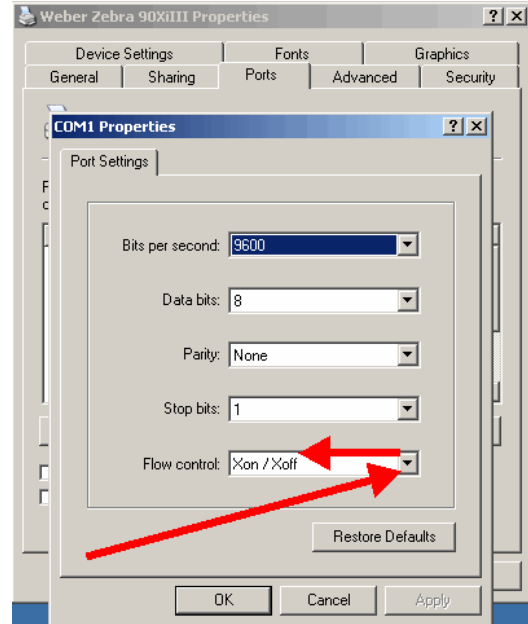


Figure 19b

20. **Printer Properties – “General” Tab – “Preferences Button”** takes you to the Printer’s Preferences window and clicking on the “**Advance Button**” will get you to the “**Document Options**” settings for Darkness, Speed, Label Top Adjustment, Tear-off Setting, Print Rotation, and Repetition(printer or computer repetition) settings as shown in (Figure 20) below:

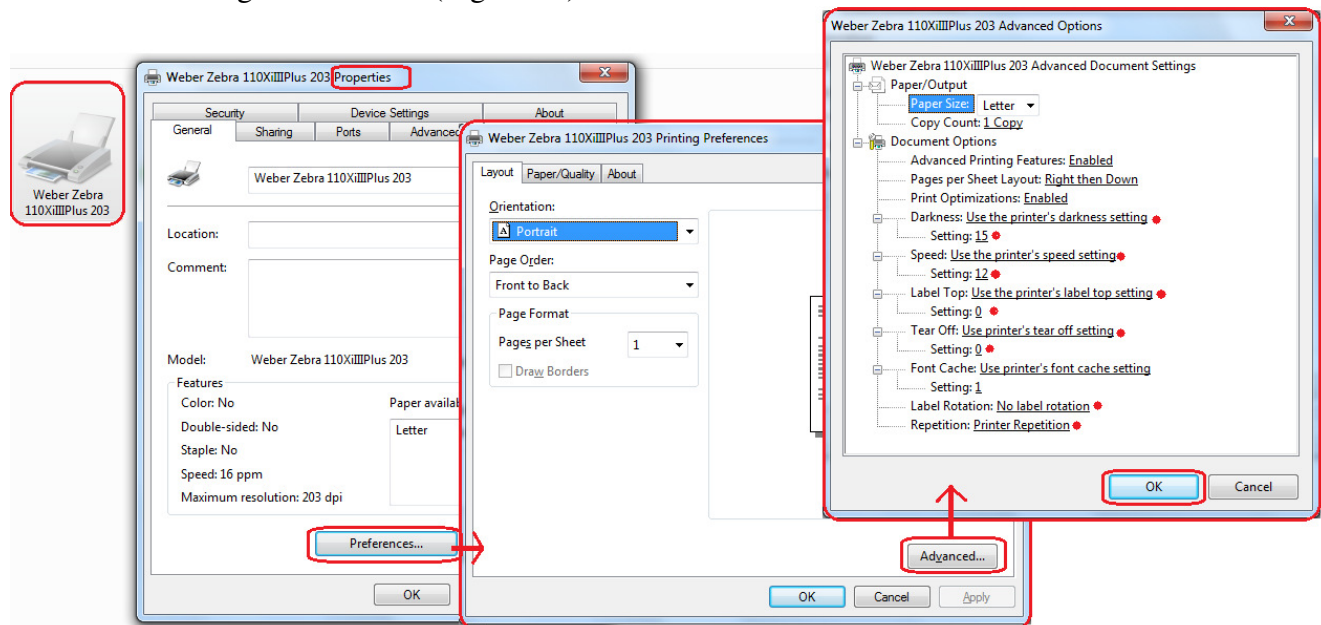


Figure 20

Please note: *The initial printer’s printing preferences from installation will be automatically defaulted to “Use the Printer’s Settings” for Darkness, Speed, Label Top and Tear-off. Whatever settings are set on your Printer will drive the outcome of the printouts of your label formats, unless you have specific printer settings in your label design.*

21. **Printer Properties – “Device Settings” Tab** - takes you to the printer’s device settings for Label Size, Cutter(*if your model printer supports it*), Template Memory(*if your model printer supports it*), and Real-Time Clock (RTC)(*if your model printer supports it*) settings that can be setup in the driver to send down commands to the printer for each label design if needed, as shown in (Figure 21) below:

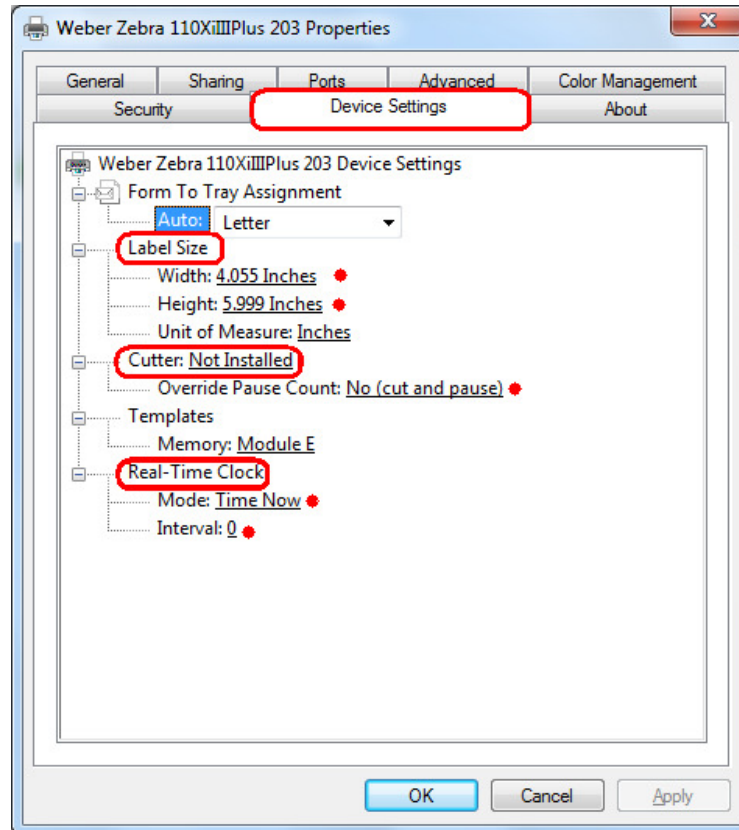


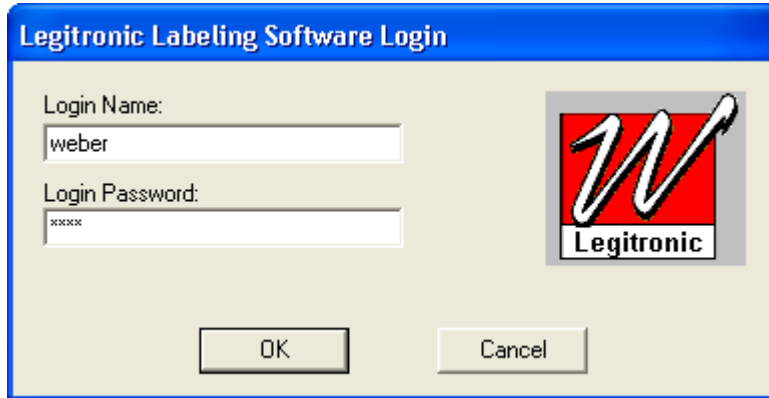
Figure 21

22. Click **OK** to finish setting up your printer. (Figure 21)

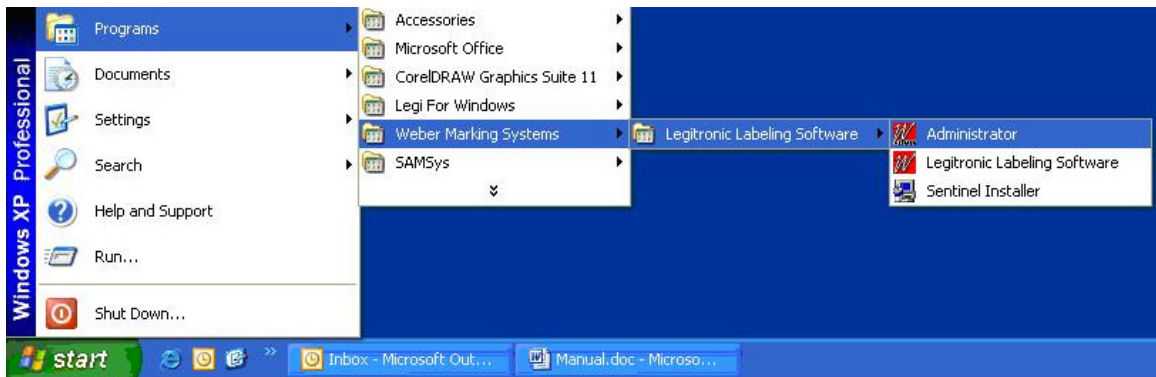
Legitronic® Administrative Login

The default Legitronic® Login:

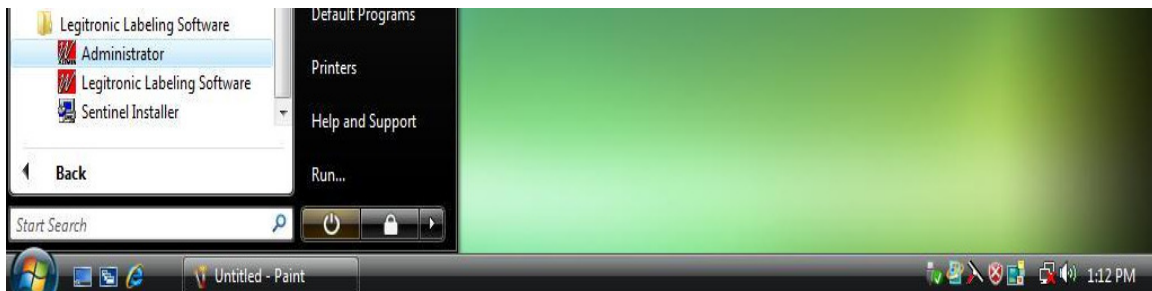
- Name: **weber**
- Password: **legi**



The default login name and password may be changed in Administrator Module and may be accessed by going into Start Menu in Windows than Programs, Weber Marking Systems and Administrator (see pictures below). Please refer to Legitronic® Users Manual for instructions on setting up security. Legitronic® Manual is included on the original Legitronic® Installation CD in User Manual folder.



Windows XP



Windows VISTA & Windows 7 (32 & 64-bit)



If you have any problems or questions while following the installation process please call Weber Marking Systems at 847-364-8500 Ext. 773.

Contact Information:

Phone: 847-364-8500 Ext. 773

Fax: 847-364-8510

E-Mail: legi@webermarking.com