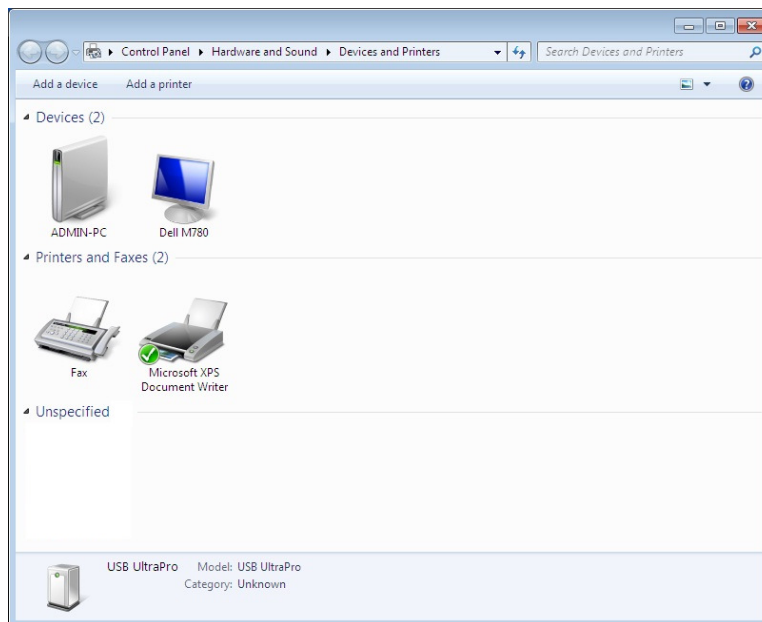


## Installing a USB Printer on Windows 7

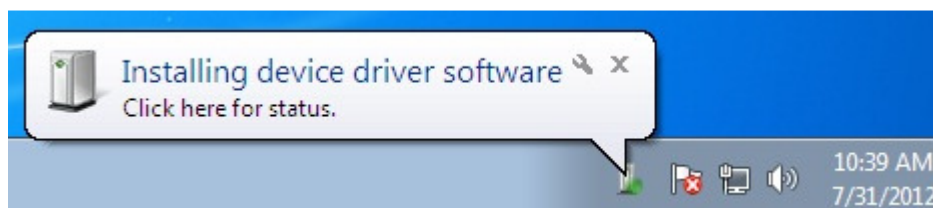
Prior to installing Legitronic software, install the printer and default Zebra printer driver as follows:

1. Start Windows
2. Connect printer to computer with a USB printer cable.
3. Select a computer USB port in a location allowing the cable to be permanently attached.



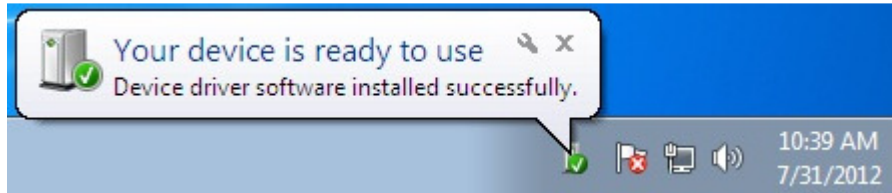
**No Installed Printers**

4. Turn on printer power.



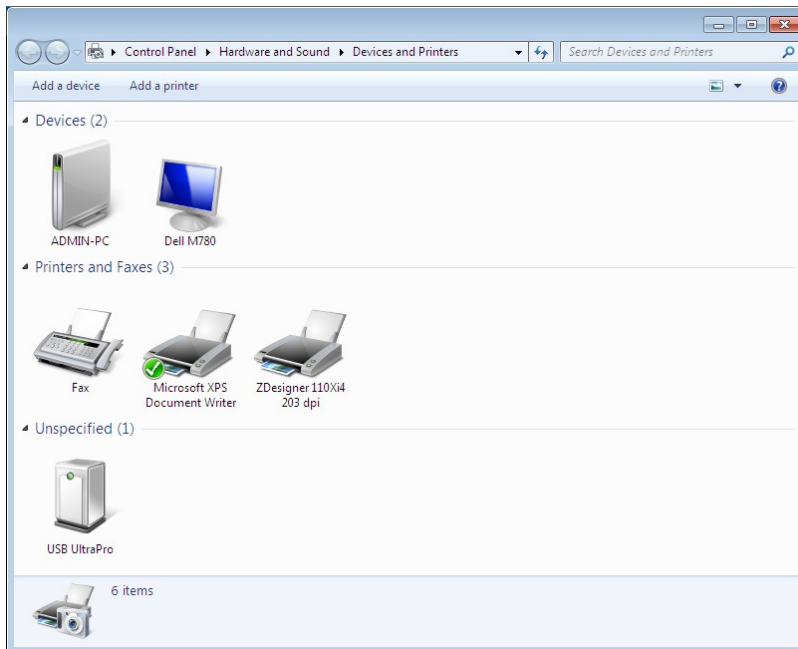
**Information Shown While Installing Printer**

5. Wait for Windows to detect and install Zebra printer driver.



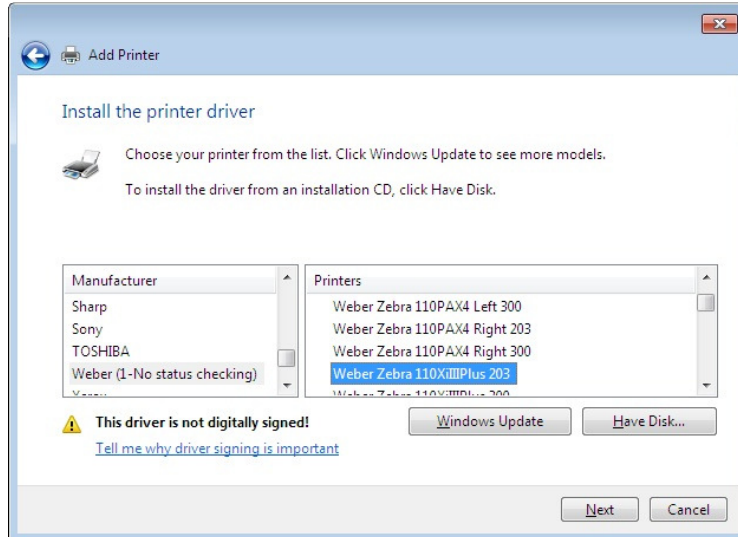
**Successful Installation of Printer Driver**

6. Install Legitronic Software.
7. Click Start and Navigate to Devices and Printers.



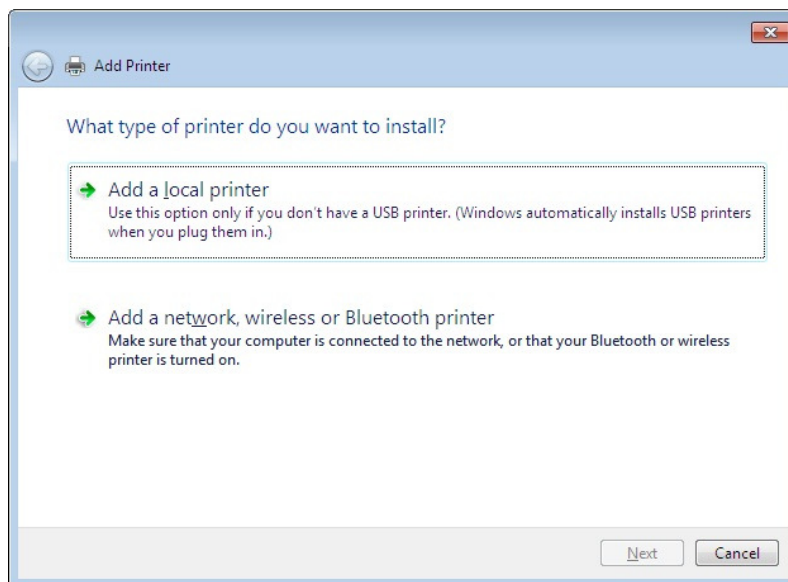
**Installed Zebra Printer Driver**

## Add Legitronic Printer Driver.



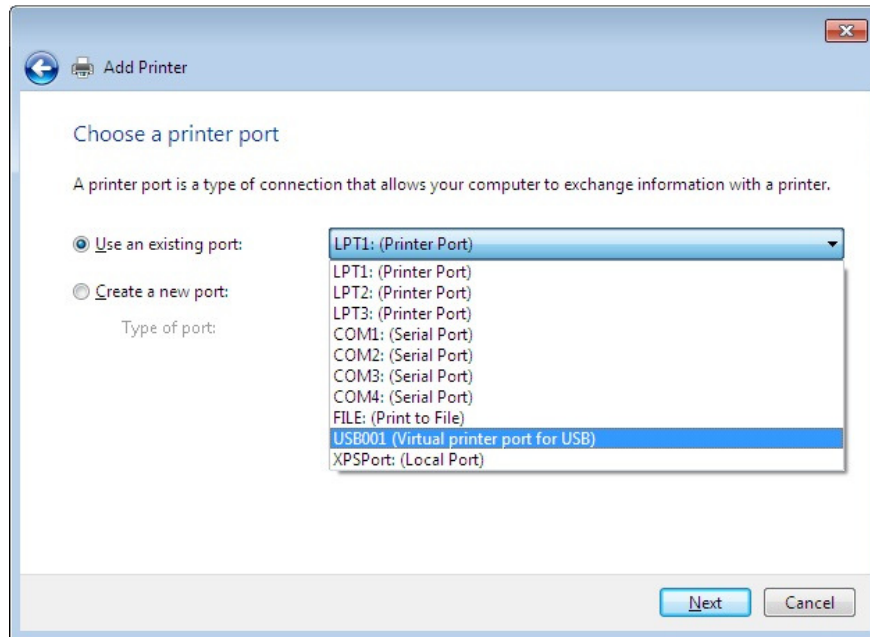
### Adding Legitronic Printer

8. Install as a Local Printer Disregarding Instructions Shown on Dialog.



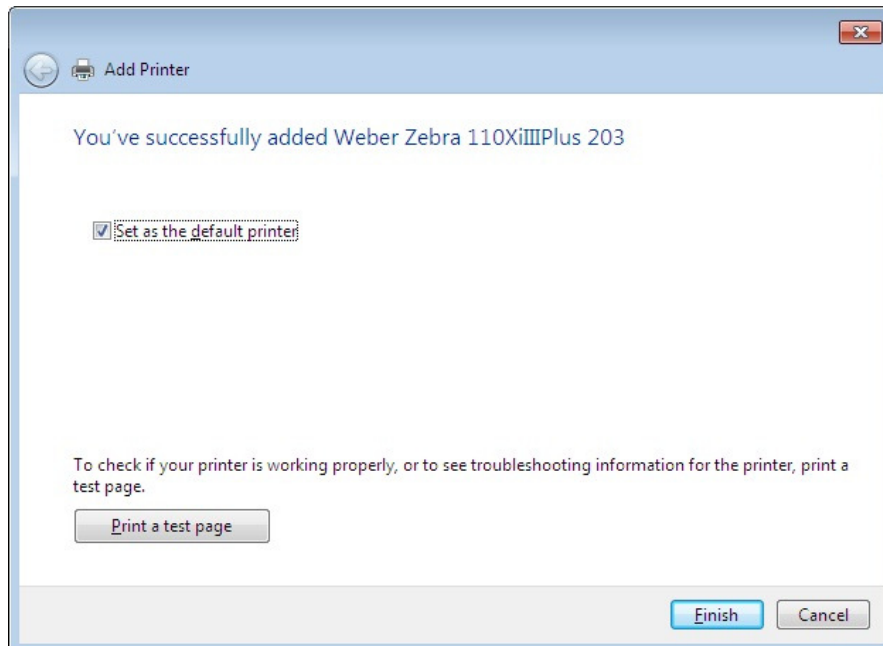
### Install Local Printer

9. Select USB Virtual Printer Port Created by Zebra Driver Installation.

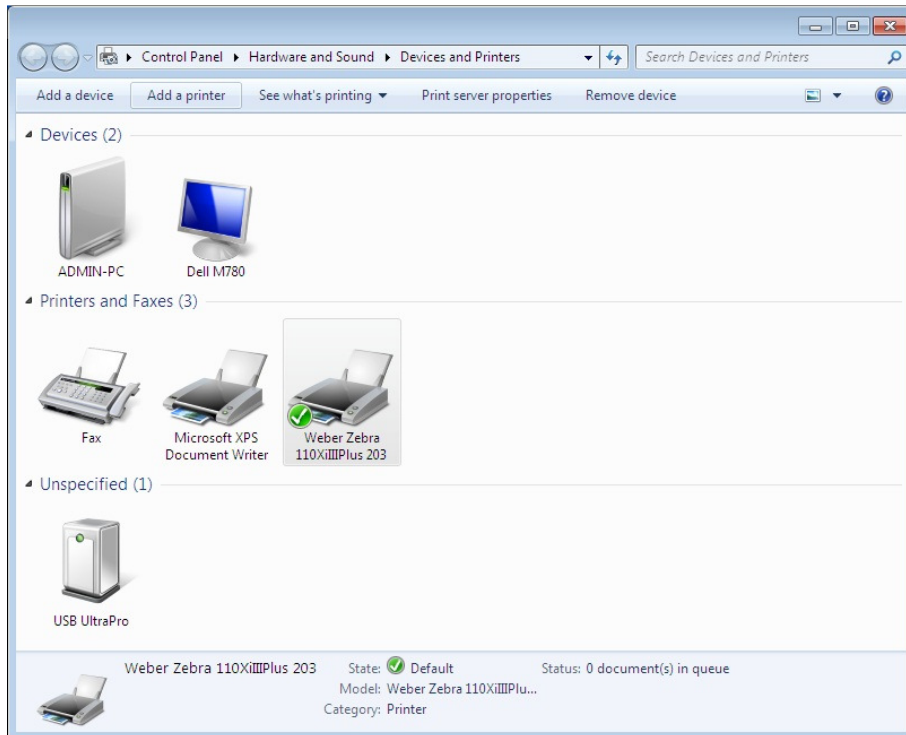


**Select USB Virtual Printer Port**

10. Set Legitronic Printer to Default Printer.

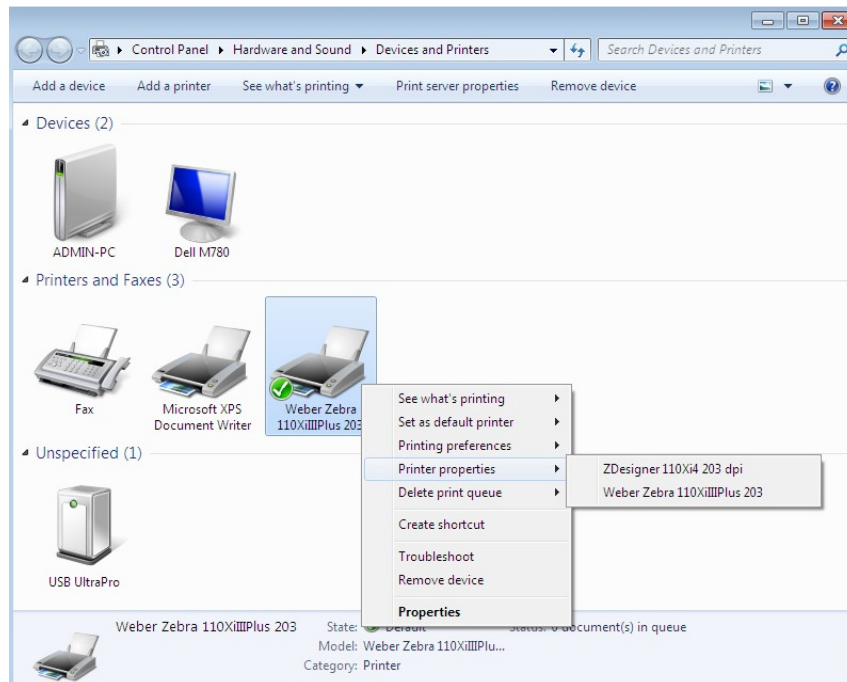


**Default Printer**

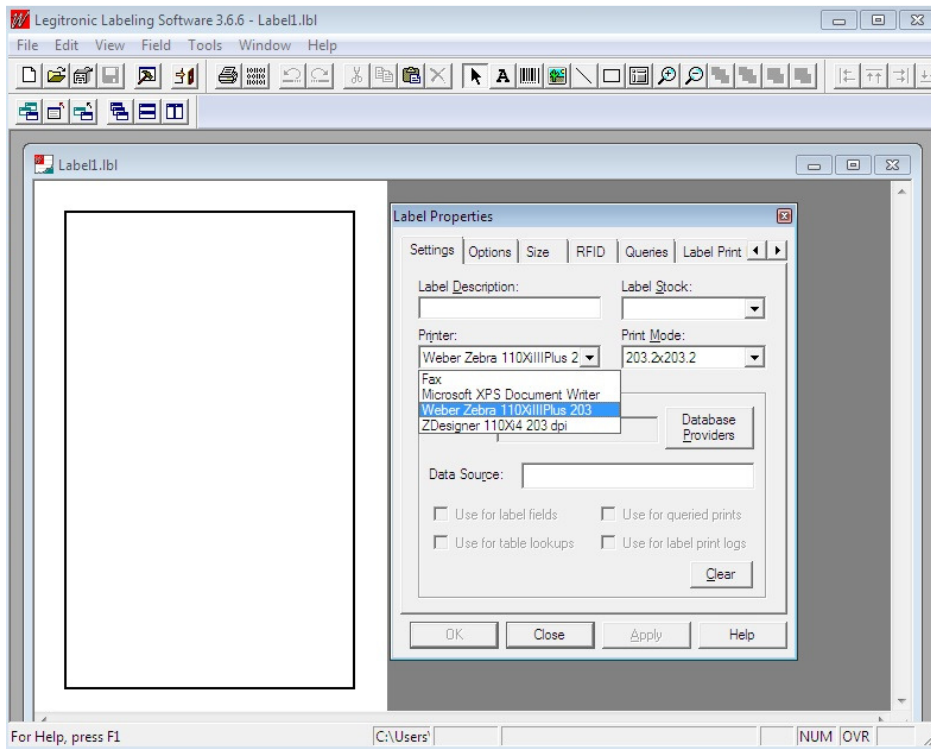


**Added Legitronic Printer (Note Zebra Printer Icon Does Not Appear)**

11. Zebra driver has not been removed and is available if needed.

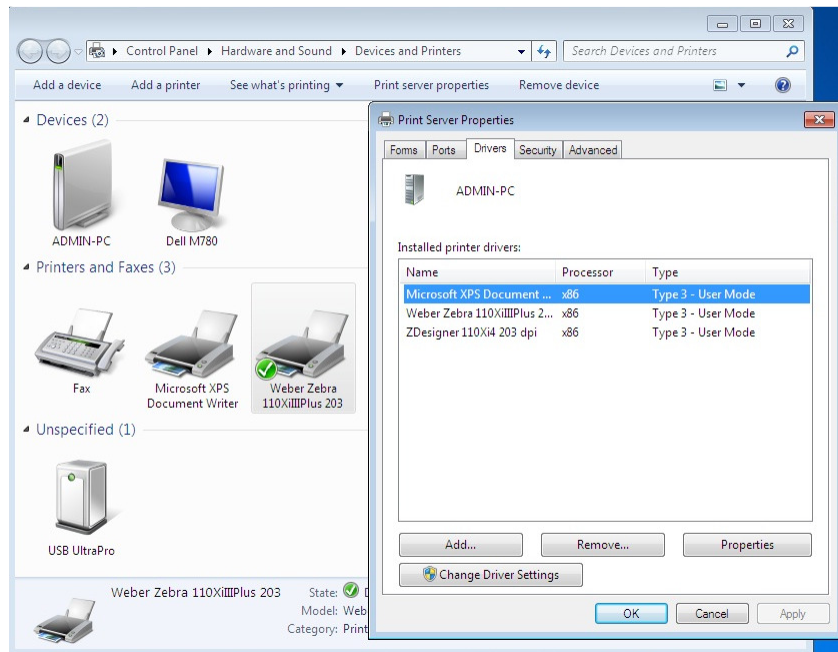


**Printer Properties**



**Both Printers Available in Legitronic**

## Print Server Properties Available to Manage Printer Files



**Print Server Properties**