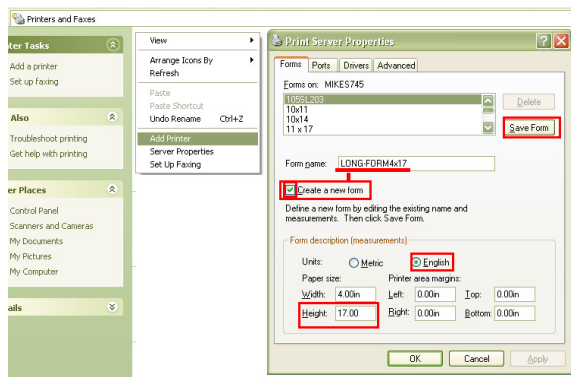


# Printing Labels Longer than 11 Inches When Using the Latest Legitronic Drivers (3.6.6.3011 and higher)

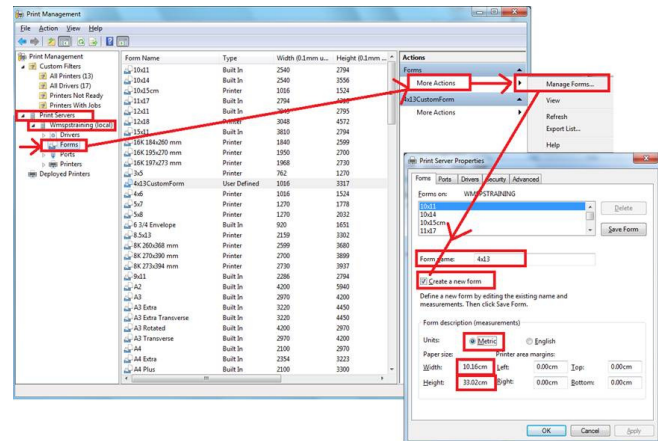
Printer drivers in Windows XP, Window Vista\7 & 8 will use the default paper size, Letter. Letter is 8.5 X 11” so when you create a label longer than the default, it will be cut off at 11 inches. Here’s how you fix that.

- Open the **Print Server Properties(WinXP)** <or> **Print Management(Win7/8)**
  - On Windows XP**, right-click inside the *Printers and Faxes* window and choose **Server Properties** and go to the **Forms** tab.
  - On Windows Vista\7&8**, go to **Control Panel** → **Administrative Tools** → **Print Management** → go to **“Print Servers”** to find and click on the **Forms** selection in the left-hand column. **Highlight any form**, and then click on the ► next to **More Actions** listed under the **Forms** heading in the **Actions** column (right-hand column). Click on **Manage Forms** to create new form and edit the height.

## Windows XP:



## Windows Vista\7 & 8:



- Check the **Create a new form** option and give your form a name you will remember.
- Change the **Width** and **Height** of your new form following the guidelines below.
  - The width cannot exceed the maximum width defined by the driver. (See table)
  - The height cannot exceed the maximum height defined by the printer/ driver. (39 inches for 203 and 300 DPI printers, 27 inches for 600 DPI printers).

Printer Model Series	Maximum Width (inches)	Printer Model Series	Maximum Width (inches)
Weber Zebra 110Xi	4.055	Weber Zebra 90Xi	3.440
Weber Zebra 140Xi	5.039	Weber Zebra 110PAX	4.094
Weber Zebra 170Xi	6.614	Weber Zebra 170PAX	6.614
Weber Zebra 220Xi	8.504	Weber Sato 8408	4.094
Weber Zebra Z4M	4.094	Weber Sato 8412	4.160
Weber Zebra Z6M	6.614	Weber Sato 8424	4.160
Weber Zebra ZM400	4.094	Weber Sato 8460	5.984
Weber Zebra ZM600	6.614	Weber Sato 8485	5.039
Weber Zebra 105SL	4.094	Weber Sato 8490	4.480

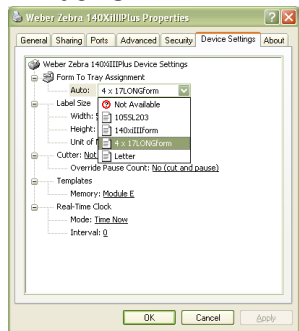
- Click the **Save Form** button.
- Close the **Print Server Properties** <or> **Print Management** page/window.

6. Open the **properties page** for your printer driver,

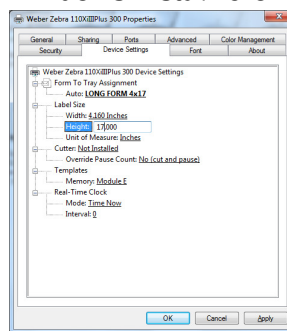
**Note:**(there are “three” places to set the new form)

- a. Select the **Device Setting tab**.
  - i. Pull down the **Paper Size** option menu.
  - ii. Highlight your form.
  - iii. Click **Apply**.

Windows XP:

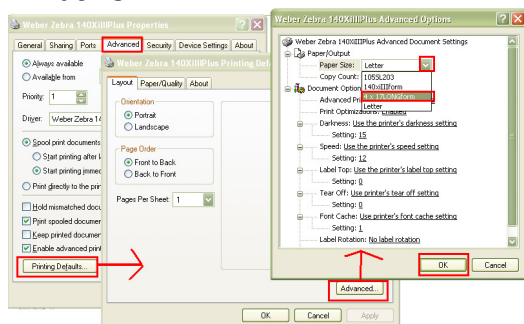


Windows Vista\7 & 8:

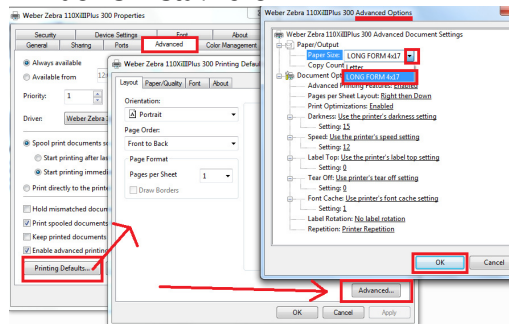


- b. Select the **Advanced tab**.
  - i. Click on the **Printing Defaults...** button.
  - ii. Click on the **Advanced...** button.
  - iii. Pull down the **Paper Size** option menu.
  - iv. Highlight your form.
  - v. Click **OK**.
  - vi. Click **Apply**.
  - vii. Click **OK**.

Windows XP:

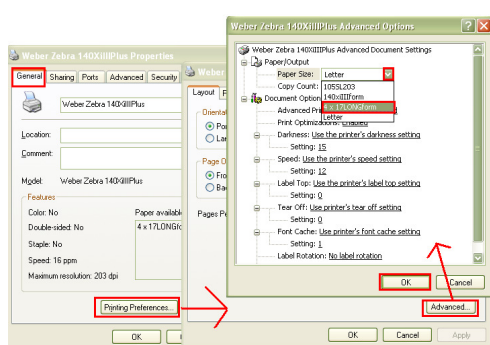


Windows Vista\7 & 8:

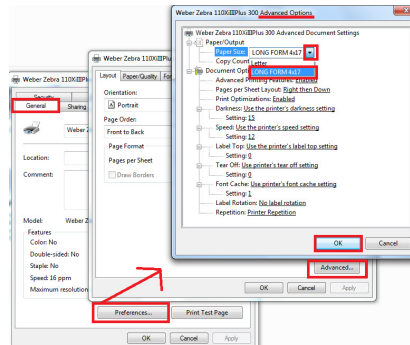


- c. Select the **General tab**.
  - i. Click on the **Printing Preferences...** button.
  - ii. Click on the **Advanced...** button.
  - iii. Pull down the **Paper Size** option menu.
  - iv. Highlight your form.
  - v. Click **OK**.
  - vi. Click **Apply**.
  - vii. Click **OK**.
  - i. Click **OK** again.

Windows XP:

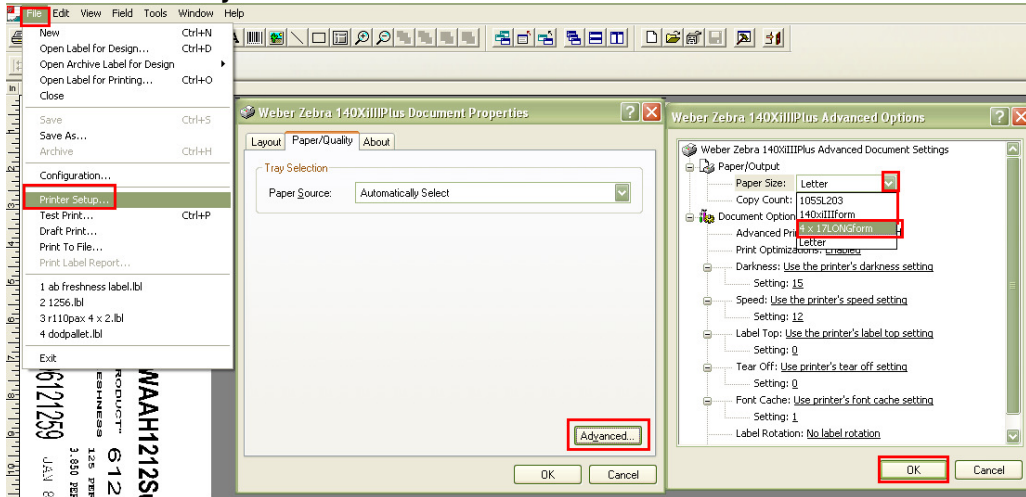


Windows Vista\7 & 8:



7. Close the **Printer Properties** page.

8. **Open the label you need to print Under the Legitronic software.**
- i. Click **File**→**Printer Setup**.
  - ii. Click **Advanced** on either the **Layout Tab** <or> the **Paper/Quality Tab**.
  - iii. Pull down the **Paper Size** option menu.
  - iv. Highlight your form.
  - v. Click **OK**.
  - vi. Click **OK**.
  - vii. **Save your label.**



**Note:** If the label will be printed from multiple PC's, all these Steps must be performed on each PC.