

ODBC (Open Database Connectivity) for MS-Excel Microsoft OLE DB Provider for ODBC Drivers (Legitronic v3.6.2 & Later)

Open Database Connectivity (*ODBC*) is a standard or open application-programming interface (*API*) for accessing a database /or/ spreadsheet. By using ODBC statements in a program, you can access files in a number of data repositories, including MS-Excel, and a number of different databases such as; MS-Access, SQL and Oracle. In addition to the Excel-Spreadsheet software, a separate module or driver is needed. The main proponent and supplier of ODBC programming support is Microsoft.

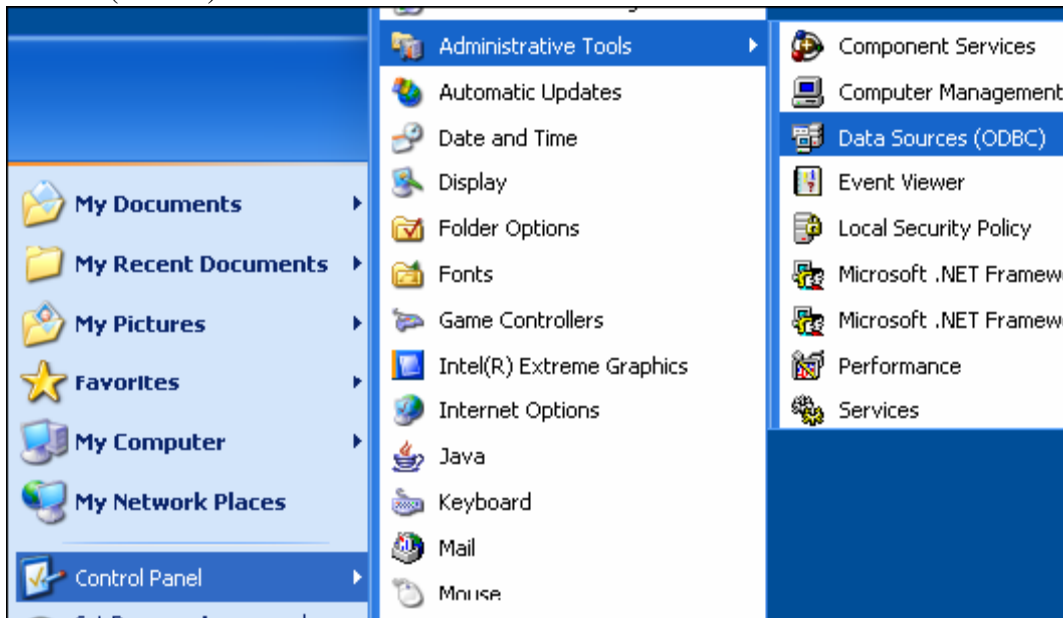
This document covers the setup of the ODBC driver and label design. **Microsoft Excel**(version **Microsoft Office Excel 2003**) running under Windows XP Professional is used as an example in this document. The configuration of the ODBC Driver will not change when using other Excel spreadsheets. Setting up the label design will remain the same.

Requirements:

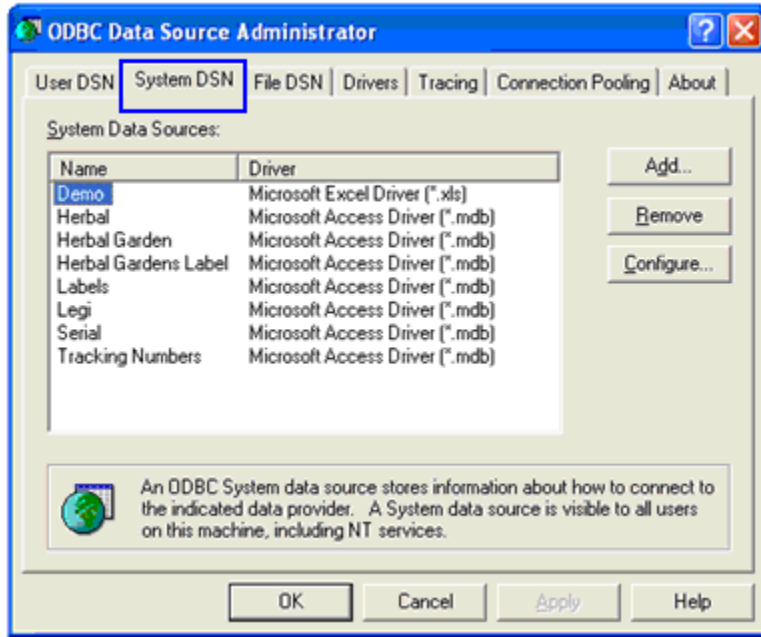
- Make sure you have Microsoft Excel 2002, 2003 or higher installed.
- Make sure you have Legitronic v3.6.2 installed.

PART I Configuring the ODBC driver and defining a Data Source

1.) Click on Start then on Control Panel then on Administrative Tools then on Data Sources(ODBC).

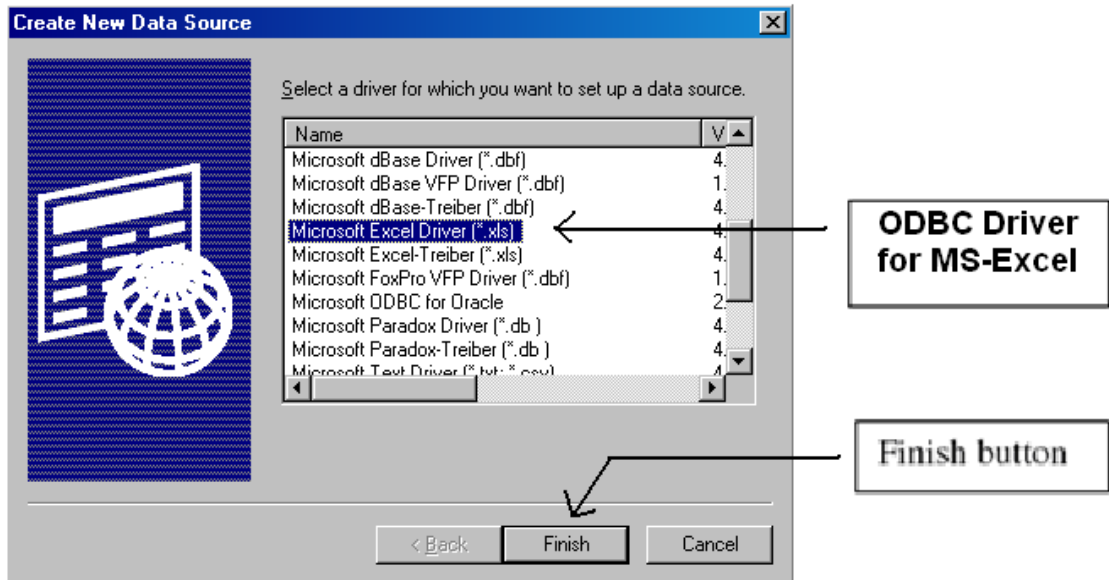


2.) Select the System DSN tab and click [Add]



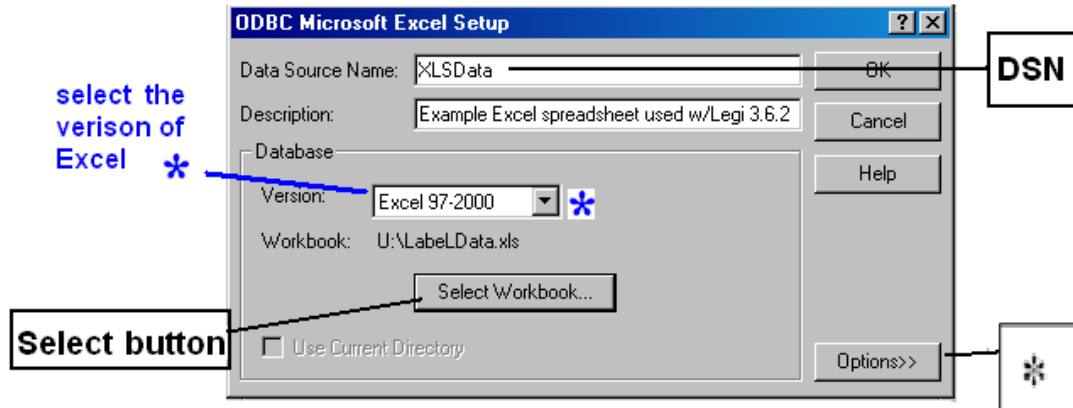
3.) The next step is creating a Data Source. The Data Source is the key name that you enter to connect to your **Excel Spreadsheet** to the Label format. Select the Excel name: **Microsoft Excel Driver [*.xls]** you are using and click finish.

For this example, Select **Microsoft Excel Driver [*.xls]** and click [Finish].

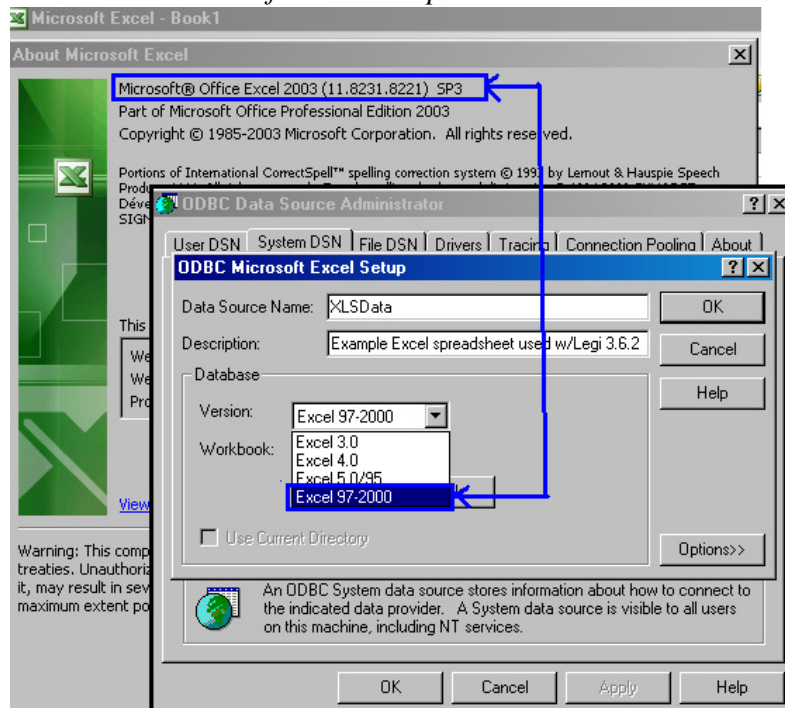


4.) The next step is to enter a Data Source Name (DSN). The DSN will be the name that will be used in the Legitronic 3.6.x ODBC database field that will reference the label format to the assigned **Excel-Spreadsheet**. The DSN is assigned by the operator and can be any combination of alpha and numeric characters.

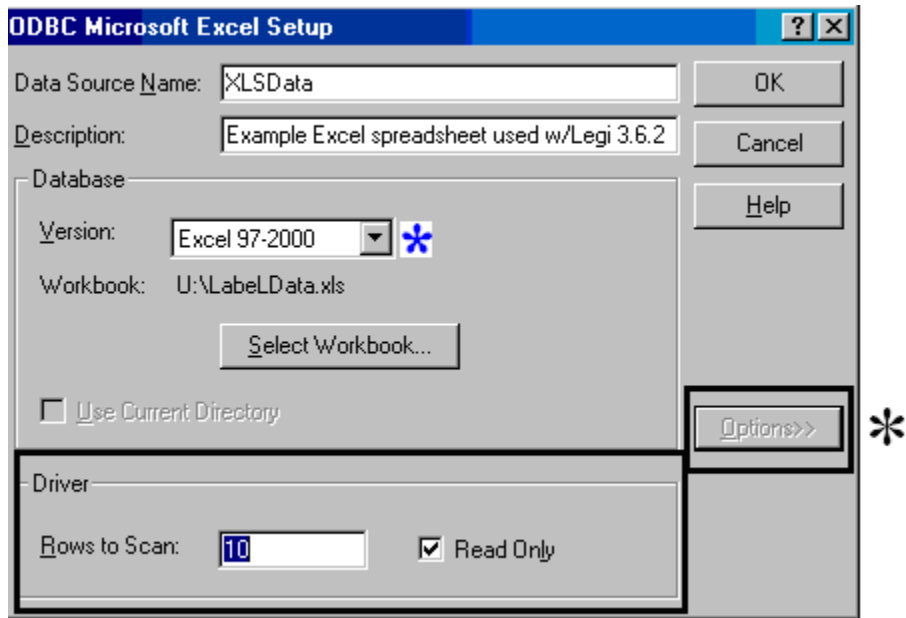
Note: The description field is optional and only to be used as a reference.



* Clicking the *[Version:]* drop-down menu list selects the latest version that is listed and associated with the version of Excel the Spreadsheet was created under.

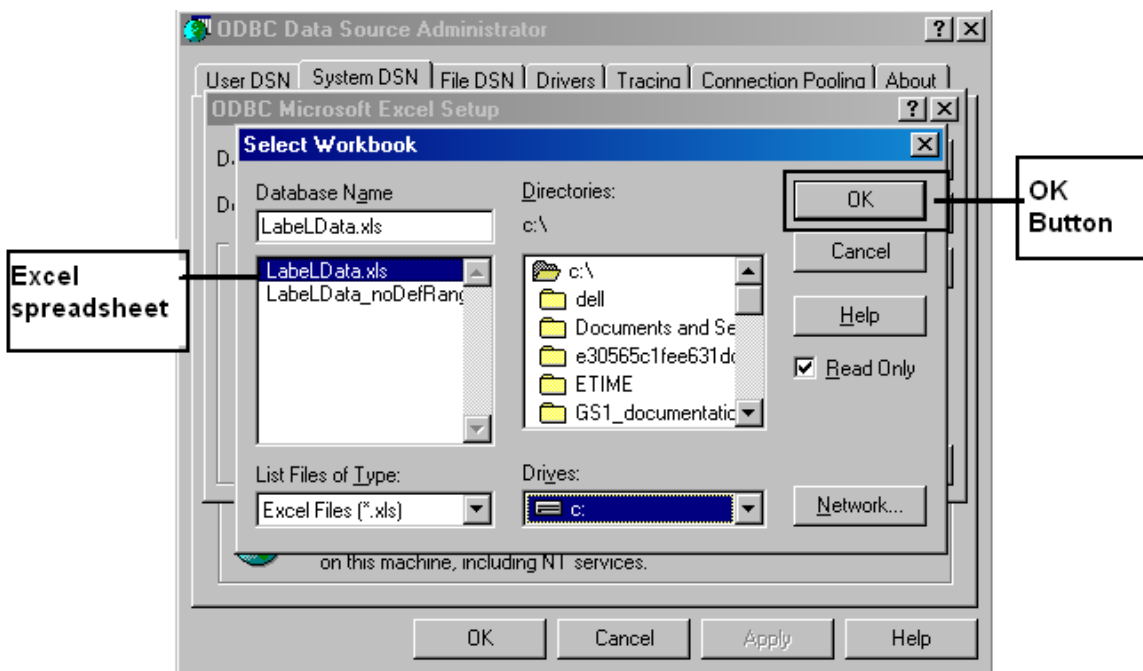


* Clicking the **[Options]** button allows the setting for the number of “Rows to be scanned” in a spreadsheet. “**Rows to Scan** specifies the number of rows that Setup or the driver will scan when setting the columns and column data types. Can be any number from 1 to 16.”
 Source: Microsoft Help under ODBC Microsoft Excel Setup



The number of “Rows to Scan” captures the properties of the data in each cell for those rows. This sets the known attributes of what the rest of the data will be throughout the rest of the spreadsheet.

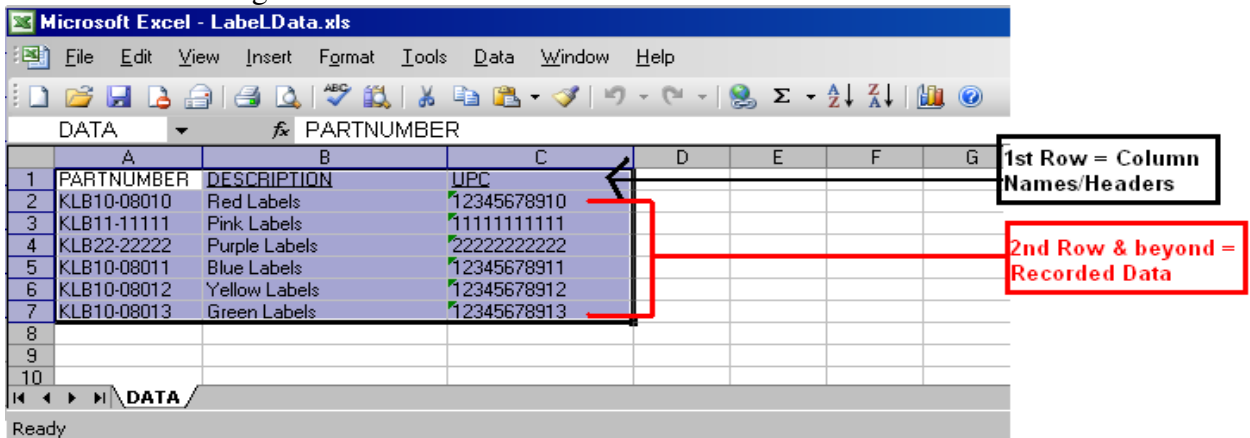
5.) Click the **[Select Workbook]** button on the **ODBC Microsoft Excel Setup** screen. The following screen will appear. Select the **Excel Spreadsheet** to be used for the Label. Then click **[OK]**.



PART II Setting up Label Design with Using an Excel Spreadsheet

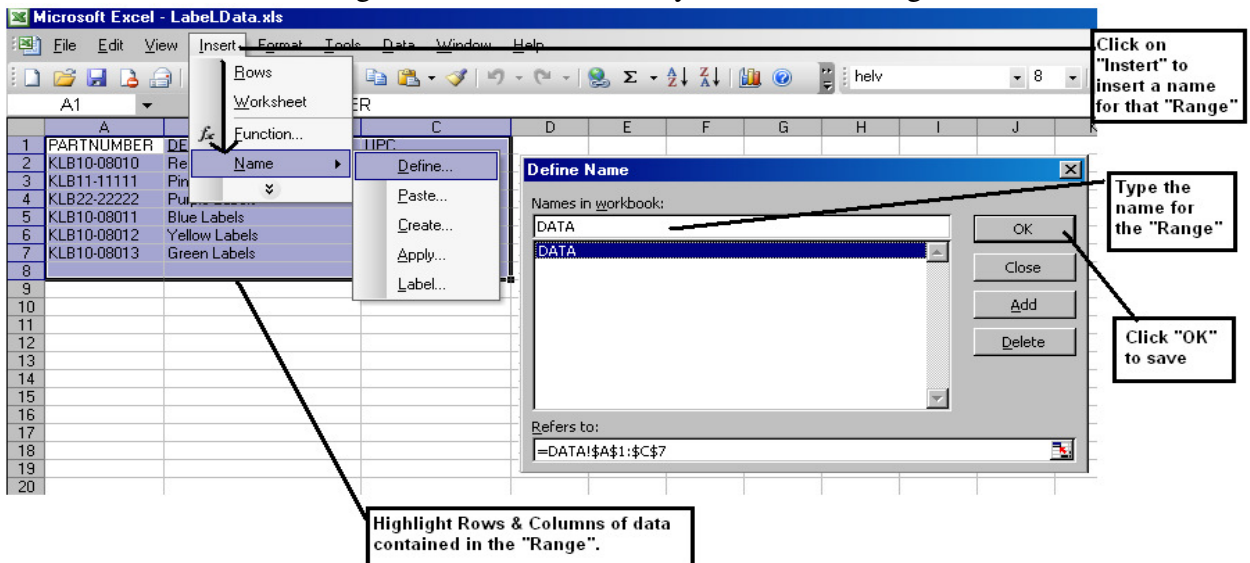
Using an MS-Excel Spreadsheet is going to be a 1-to-1 ratio as if you were setting up one table per database; therefore meaning you will be creating and defining the data on one worksheet per Excel Spreadsheet.

The column names/headers will be defined in the “1st row” (row 1) of the spreadsheet. Recorded data should follow, starting in the “2nd row” (row 2) of the spreadsheet under the appropriate column/headers. The following is an example of an Excel Spreadsheet with a “defined range” on one worksheet.



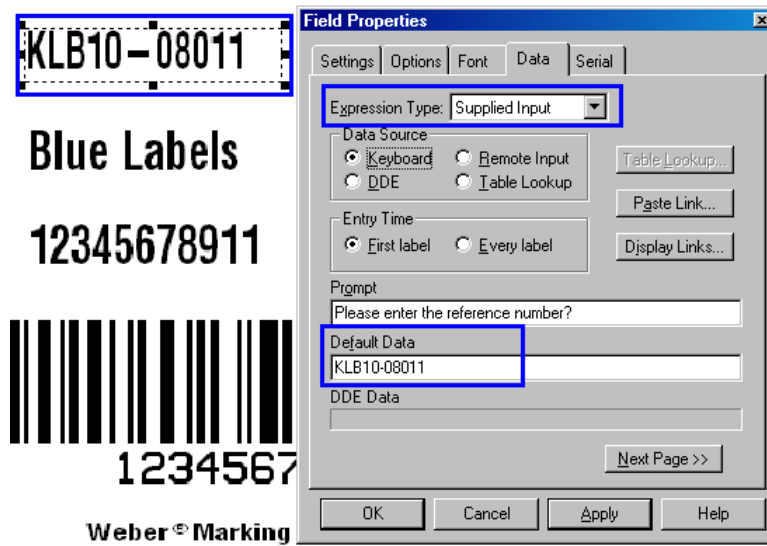
Example of an Excel Spreadsheet with a “Defined Range” name: “DATA”

To “define a range” you highlight all rows & columns of entered data in your spreadsheet and click on “Insert” → “Name” → “Define” which will bring up a “Define Name Window” where you will enter the name of your highlighted range. This “Name” is the “Table Name” specified in the Legitronic software (*similarly to when using a database application*). This will enable ODBC driver & Legi interpret your Spreadsheet as a table of data with column headings. Click “OK” to save your “Named Range”.



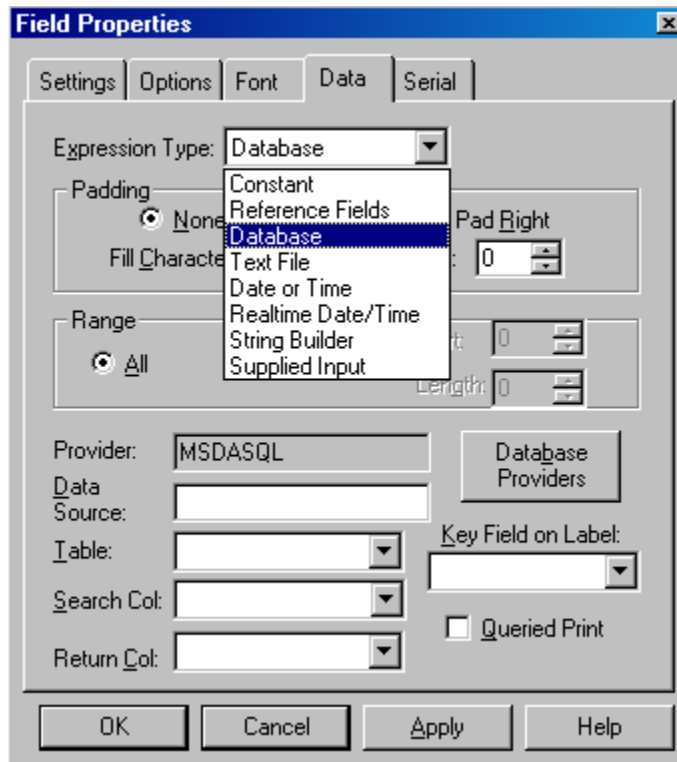
Example of How To “Defined Range” name: “DATA” for an Excel Spreadsheet

1.) The first step is to set up a key field for the label. In Legitronic, the key field on the label usually is an operator-supplied field. This field will typically supply a unique piece of information.



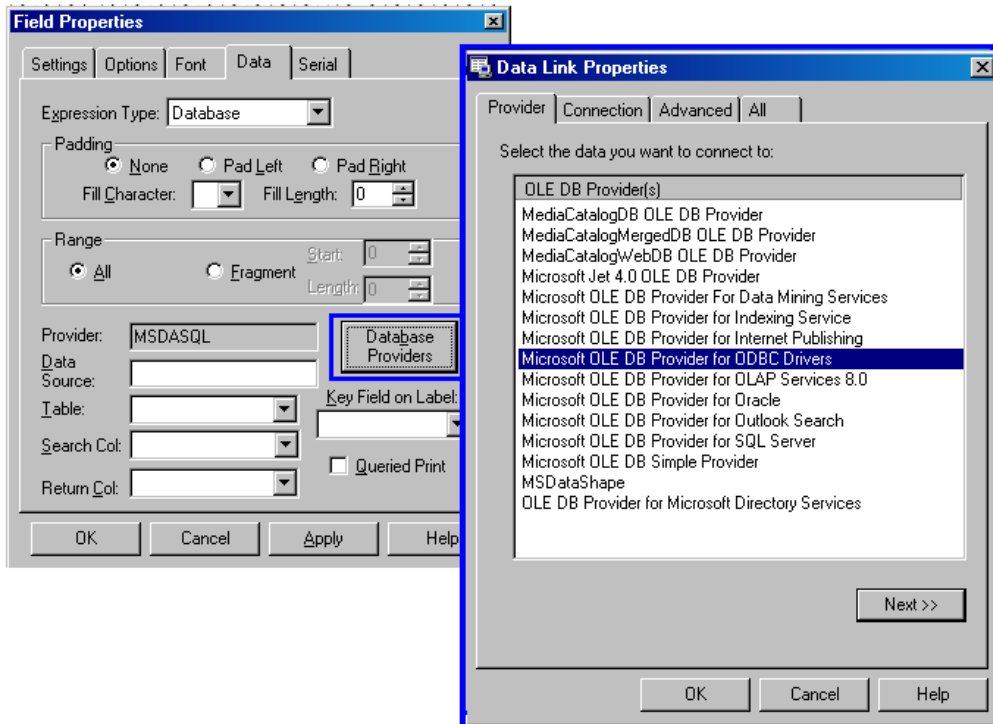
2.) The next field to be created will be the Database field (*even though you are using an “Excel Spreadsheet” as your database*). Create a text field on the label and right mouse click on the field and choose “Data”.

Then select Database as the Expression Type.

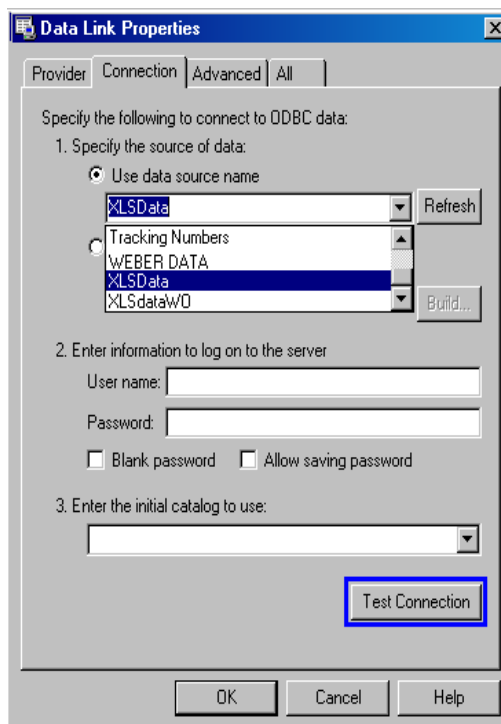


Choose Database for Expression Type

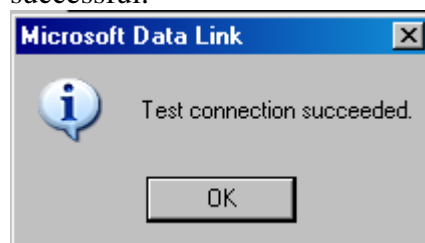
3.) Select/Click on the Database Providers Button and click on the Provider Tab to select “Microsoft OLE DB Provider for ODBC Drivers”, then click on the <Next> Button.



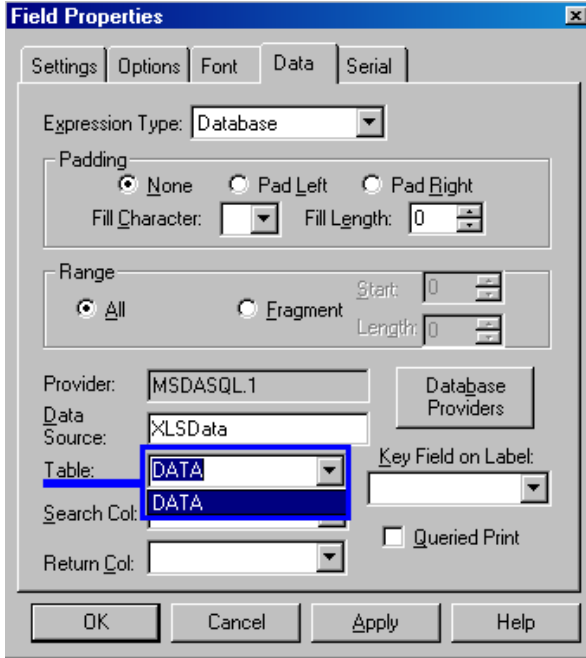
4.) On the “Connections” Tab, click on the dropdown-arrow to select the “Data Source Name” you created for your Excel Spreadsheet under MS-ODBC.



And then click on the “Test Connection” button to make sure the connection is successful.

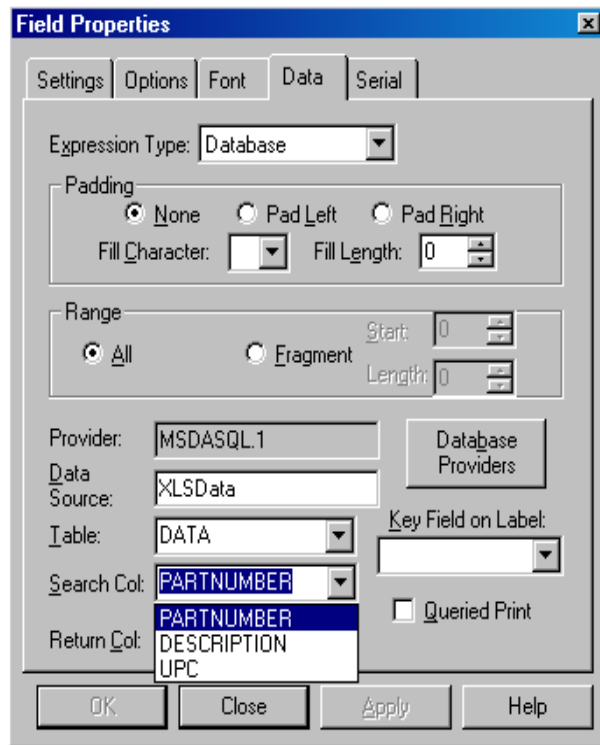


5.) Select the associated “data range name”(created from the “defined ranged” in Excel) from “drop-down” menu arrow to select the associated “defined range/table name” of the “Data Source’s Excel Spreadsheet”.



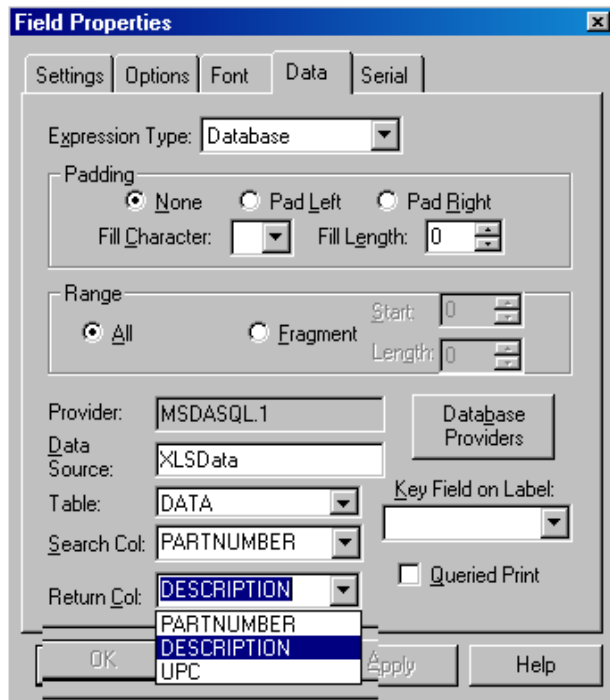
Select the "named-range" that is your Table-name within Legi. Note: only 1 table should be associated with 1 Excel Spreadsheet.

6.) Select Search Column



Select Search Column. Note: All Column headings within the first row of your Excel Spreadsheet are listed.

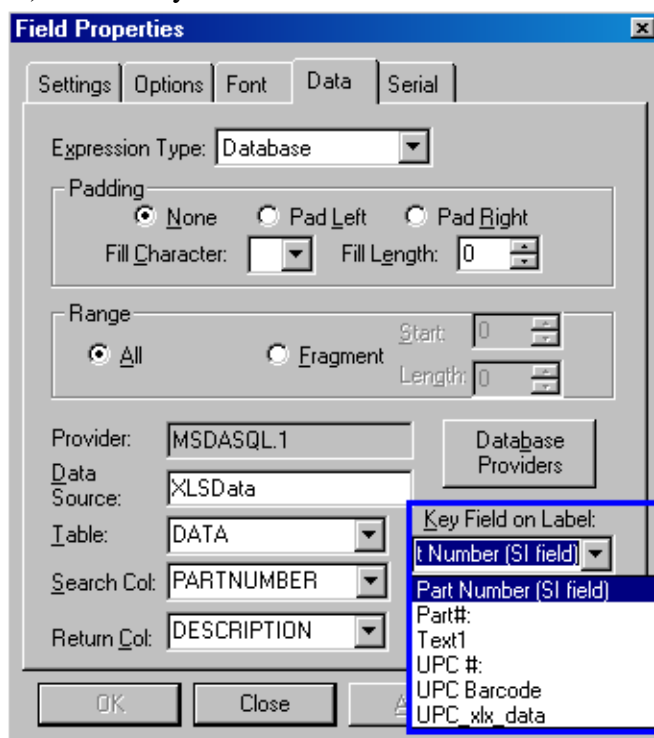
7.) Select Return Column



Select Return Column

Note: All Column headings within the first row of your Excel Spreadsheet "named-range" are listed.

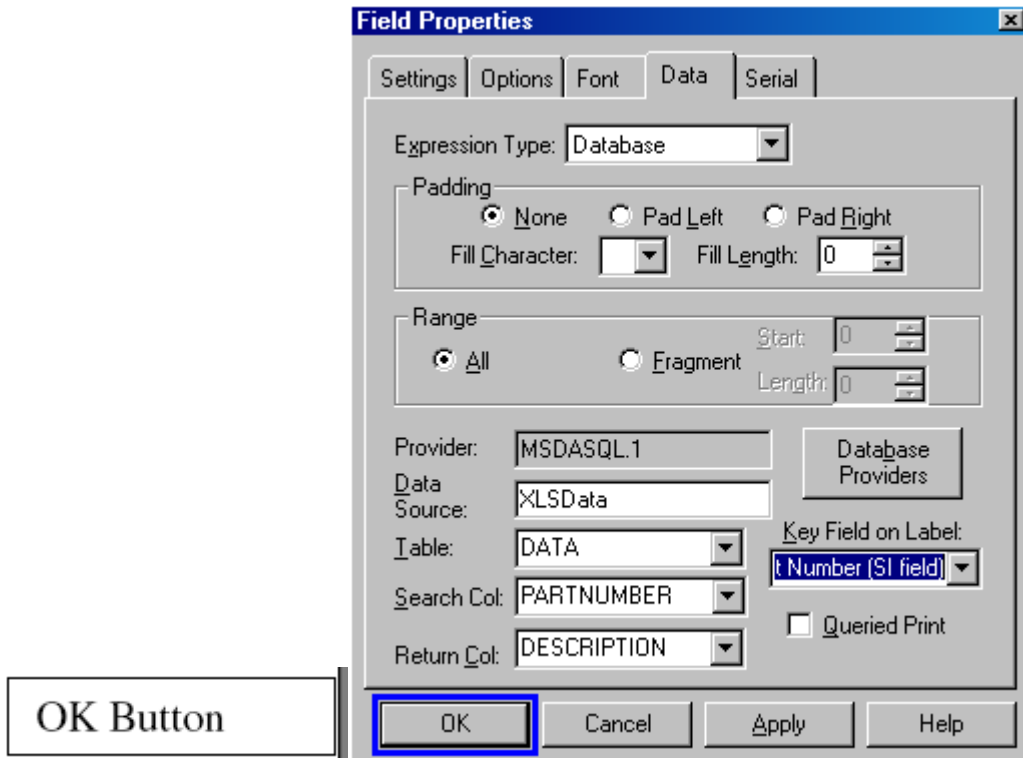
8.) Select Key Field on Label.



Select Key Field on Label

Note: All Field names on label format are listed

9.) Click [OK]



10.) You are finished setting up the ODBC field within Legitronic Labeling Software.



If you have any questions on this process, please contact
Product Support for Legitronic Software at 847.364.8500 ext 773.