

Feature Additions

1. Support for labeling medical devices using UDI compliance labels. GS1-UDI, HIBCC-UDI, and ICCBBA-UDI bar codes, including bar code wizards to create the bar codes and define the encoded information, are now available.
2. Download Font feature for adding and removing TrueType fonts from Zebra printers using Legitronic printer drivers. TrueType fonts can now be downloaded directly from Legitronic, along with full Unicode support for all characters in the font.

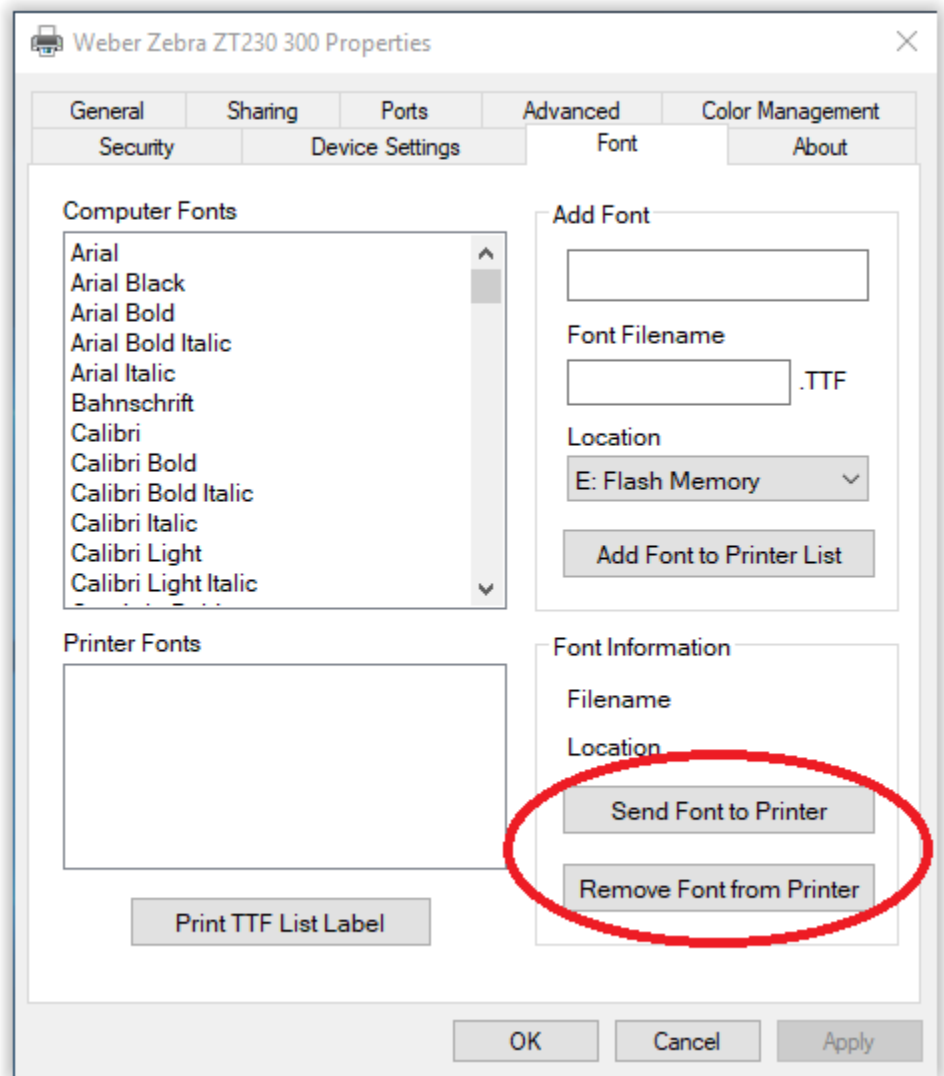


Figure 1

- a. This new feature means **you no longer need to use Zebra software to download a TrueType font** to the printer.

- b. **Removing a font** from the printer is also supported.
- c. Some Zebra printers will download TrueType fonts with the **.TTF extension** while others download with the **.FNT extension**. Weber Legitronic print drivers automatically determine which extension to use.
- d. Example of downloading a TrueType font:
Open the Printer Properties of the Weber Zebra Printer you wish to download to and navigate to the “Font” tab.
Find and select the TrueType font you wish to download within the “Computer Fonts” list. A default font name and filename will be chosen automatically. It’s recommended you keep the defaults. Change “Location” if needed. See figure 2.

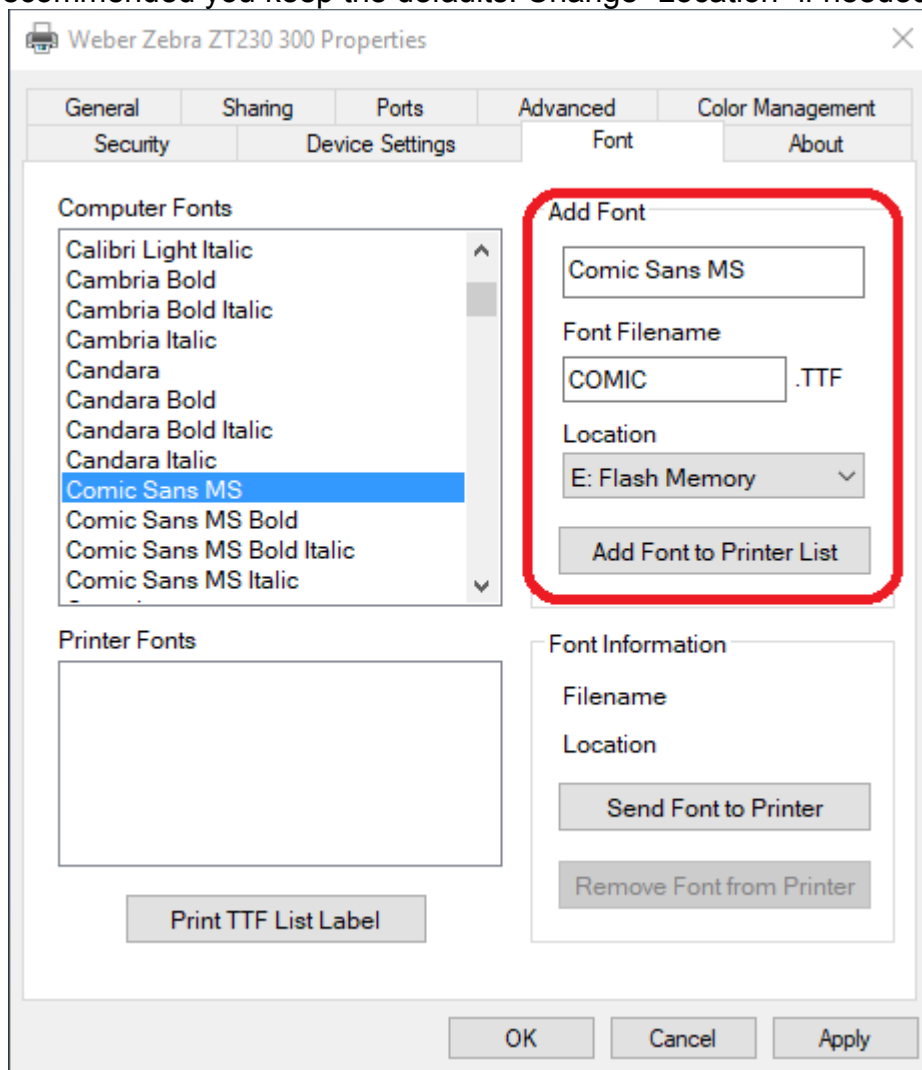


Figure 2

Press the “Add Font to Printer List” button. After pressing it you will be given additional font information and asked if you’d like to send the font to the printer now. See figure 3.

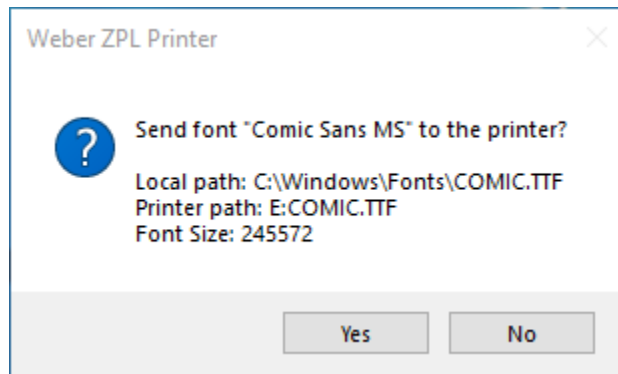


Figure 3

Before selecting “Yes” make sure the printer is turned on, connected to the computer and is online. It may take a while for a font to download depending on the size of the font.

Note: Whether you selected “Yes” or “No” the font will be added to the “Printer Fonts” list. Fonts within the “Printer Fonts” list can be resent to the printer by selecting the font from the list and pressing the “Send Font to Printer” button. See figure 4. After pressing it you will be given additional font information and asked if you’re sure.

- e. Example of removing a font from the printer:
Open the Printer Properties of the Weber Zebra Printer you wish to remove a font from and navigate to the “Font” tab.
Find and select the font you wish to remove within the “Printer Fonts” list. See figure 4.

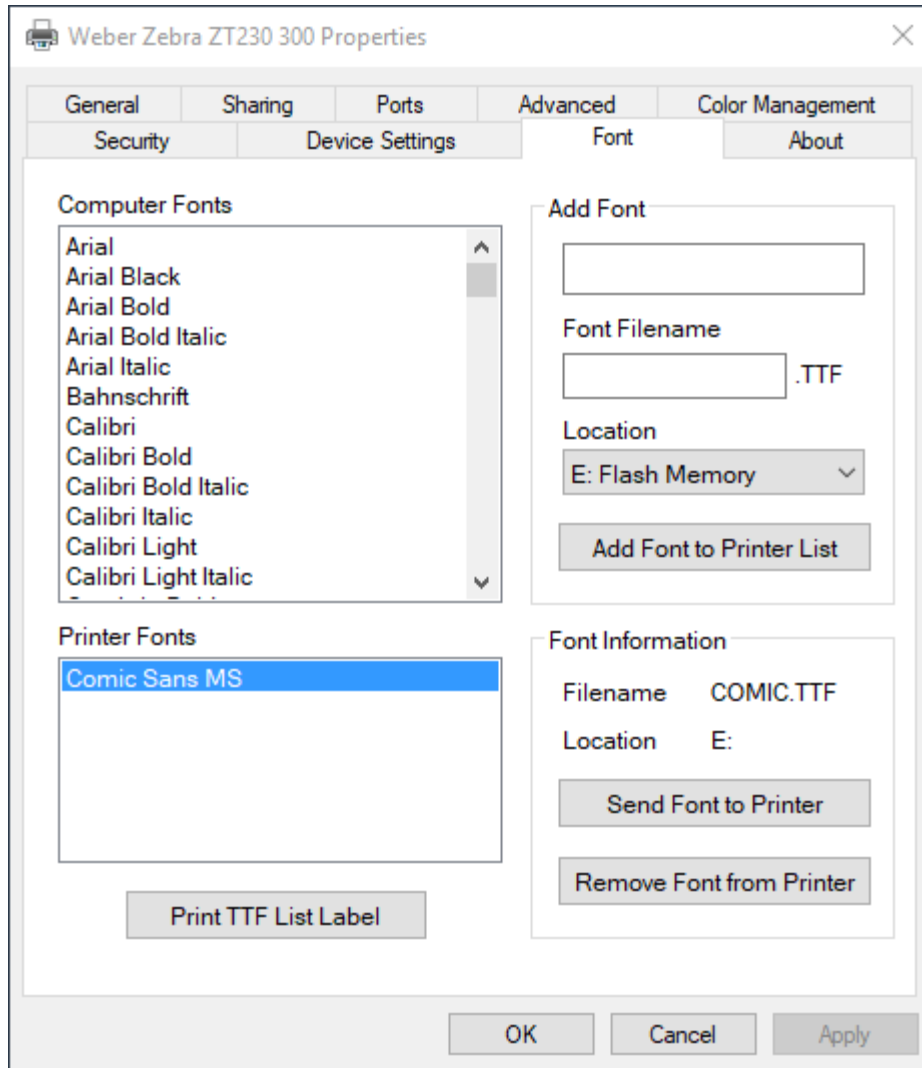


Figure 4

Make sure the printer is turned on, connected to the computer and is online. Press the “Remove Font from Printer” button. After pressing it a command will be sent to the printer immediately to remove it. Also the font will also be removed from the “Printer Fonts” list.

- f. Creating a label with a downloaded font:
Open an existing or create a label for the printer the font is downloaded to. Open the properties of a “Text” field and navigate to the “Font” tab. Select the “Font Name” of the downloaded font you wish to use. See figure 5.

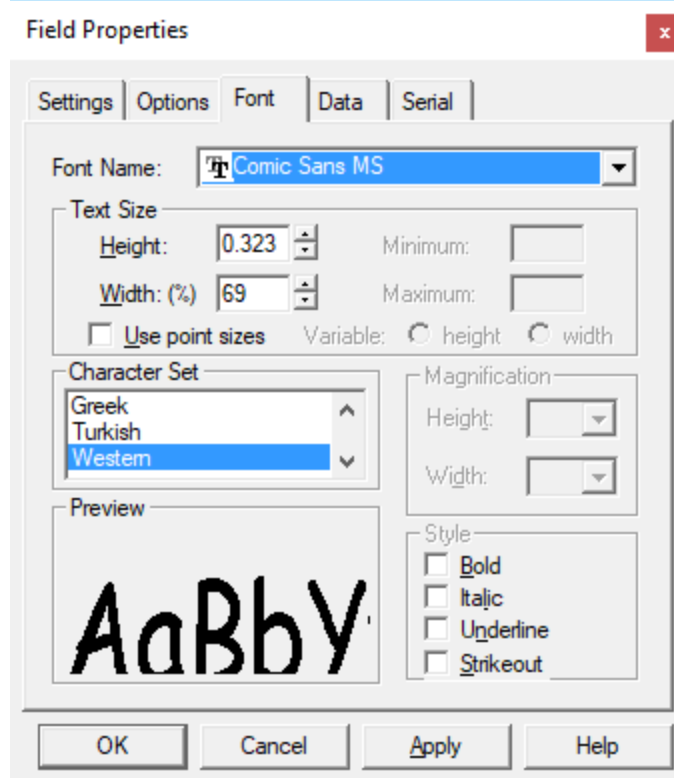


Figure 5

When printing label, the printer will use the downloaded font instead of using a graphic image to print the “Text” field.

- g. Checking which fonts have been downloaded to the printer:

Make sure the printer is turned on, connected to the computer, is online and has labels installed.

Press the “Print TTF/FNT List Label” button (see Figure 4). After pressing it a label will be sent to the printer immediately. The label contains which TTF/FNT fonts are on the printer.

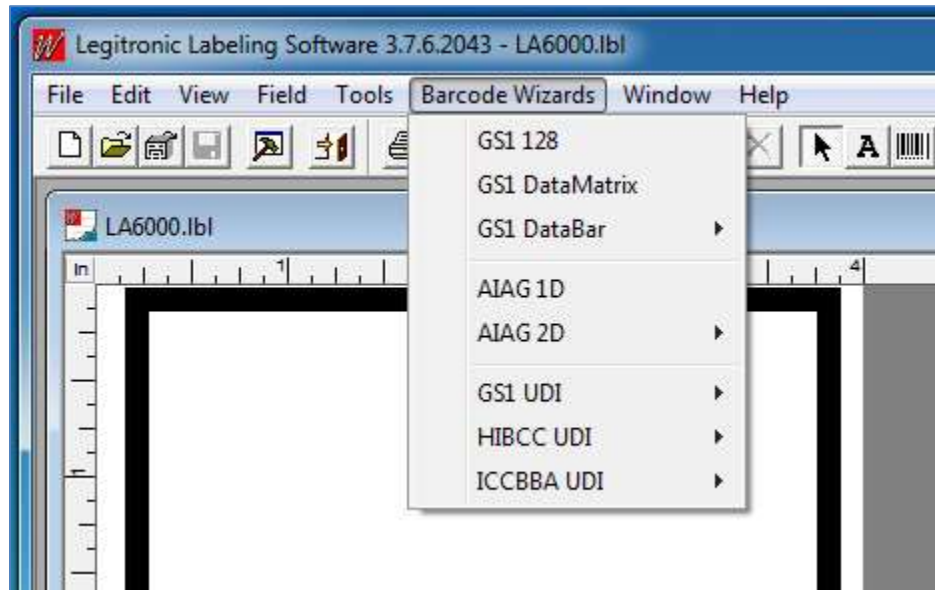
3. Improved Unicode support

- a. You can now access all characters that a Unicode printer font supports.
- b. Also supports access to all characters of a TrueType font downloaded to a Zebra printer.

4. Added drivers for the Zebra ZT510, ZT610, and ZT620 line of printers.

Feature Changes

1. Bar Code wizards are now top level menu items, noting that it is no longer necessary to create a bar code field first and then right-click on it. Expanded the available selections.



New Bar Code Wizard list

Supports the following standards, organizations, and bar code types:

A. Global Standards One (GS1)

- GS1 128
- GS1 Data Matrix
- GS1 Data Bar (Expanded, Expanded Stacked)

B. Automotive Industry Action Group (AIAG)

- AIAG 1D
- AIAG 2D (PDF417, Data Matrix)

C. Unique Device Identification (UDI)

Includes the following data formats specified by these organizations:

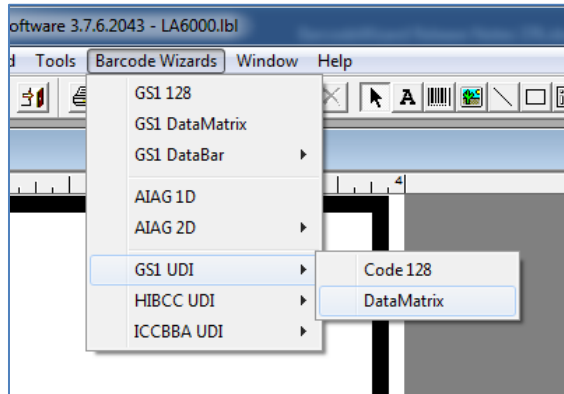
Global Standards One (GS1)

Health Industry Business Communications Council (HIBCC)

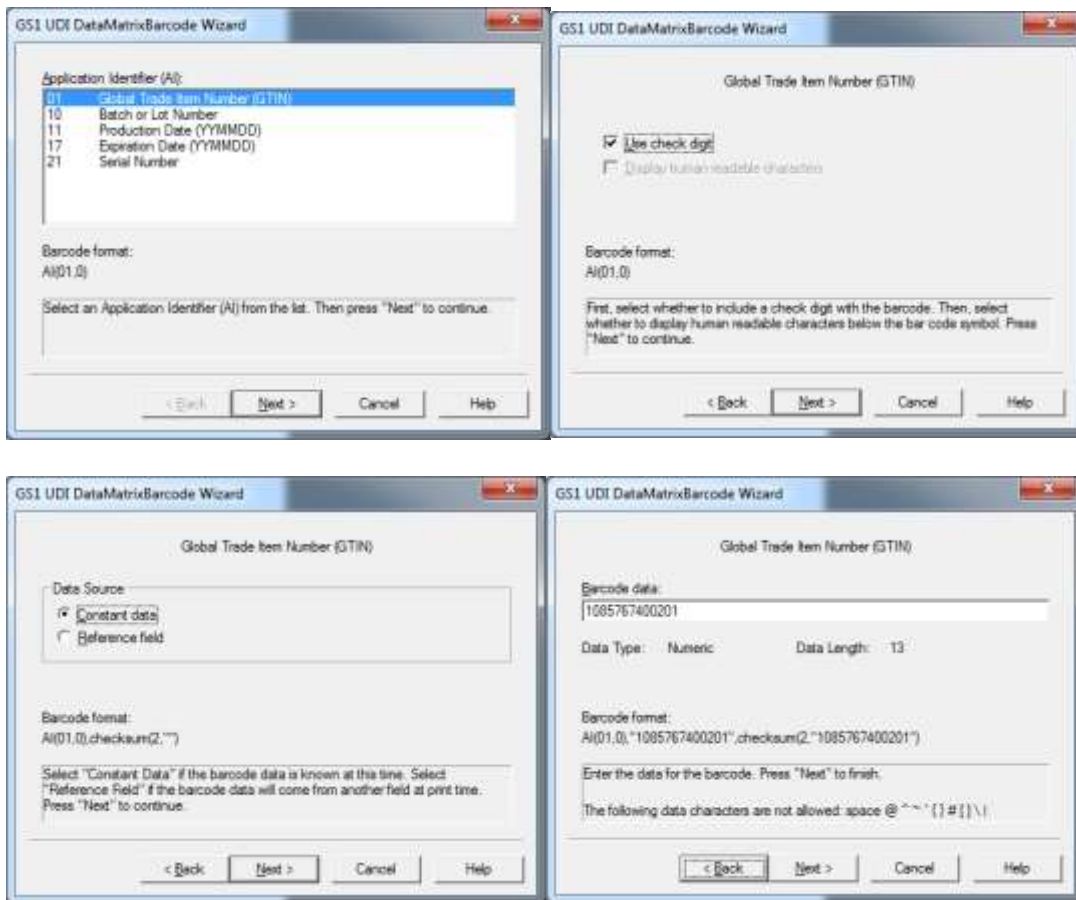
International Council for Commonality in Blood Banking Automation (ICCBBA)

- GS1 UDI (Code 128, Data Matrix)
- HIBCC UDI (Code 128, Data Matrix, Code 39)
- ICCBBA UDI (Code 128, Data Matrix)

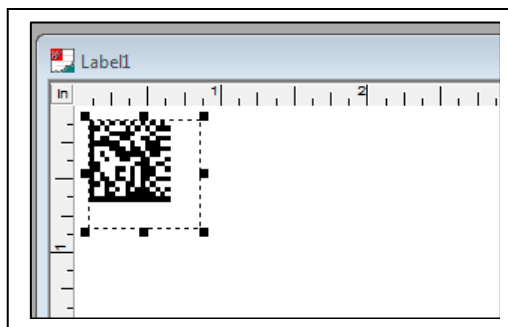
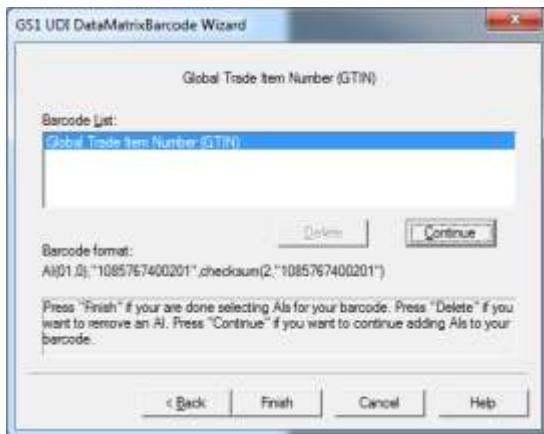
Weber Packaging Solutions, Inc. Legitronic Labeling Software Version 3.7.6 Build 2043 Release Notes



Barcode wizard example: GS1 UDI using Data Matrix



Weber Packaging Solutions, Inc. Legitronic Labeling Software Version 3.7.6 Build 2043 Release Notes



2. Improved error handling with bar codes when attempting to encode invalid data.
3. Improved Device Manager Applet for remote input serial ports on Windows 7 systems.

Defect Corrections

1. Fixed problems with incorrect positioning of fields with Legitronic's Sato CLNX printer driver.
2. Fixed a Data Matrix bar code bug where a large amount of character data caused an error.
3. Fixed problem with Legitronic not running properly when printer names exceeded 30 characters.
4. Fixed a problem with PDF-417 bar codes sometimes encoding numeric data incorrectly in WYSIWYG and with vendor-supplied printer drivers.
5. Fixed problem with Data Matrix barcodes sometimes encoding data incorrectly in WYSIWYG and with vendor-supplied printer drivers.
6. Fixed a problem when rotating 2D barcodes 180-degrees in WYSIWYG and with vendor-supplied printer drivers.
7. Fixed a problem with duplicate printing of an RTC field when the field is not left-justified.
8. Fixed a problem with QR code crashing when using Kanji mode.
9. Fixed a problem with GS1 Databar "expanded stack" bar codes displaying as "expanded stack" after the "expanded" version was selected.



10. Fixed a problem with a memory leak in the printer drivers.
11. Fixed a problem with Data Matrix bar codes when attempting to encode a large amount of data.
12. Fixed Copy/Paste bug for text fields that dropped font information from source field.
13. Fixed graphic fields upgrade bug with labels created in Legi 350 and earlier. The Dynamic Fit option was not handled properly.

14. Fixed problem in FormatDate() string builder function where range checking was done when the function was in the "false" part of an "if" statement.
15. Fixed DDE links for text fields.
16. Changed method used to display Device Manager applet for Remote Input serial port settings. This was changed to be compatible with Windows 7 and later.