



TRACKING SERIAL NUMBERS IN LEGI FOR WINDOWS VERSION 3.0.0 THROUGH LEGITRONIC LABELING SOFTWARE VERSION 3.5.1

OVERVIEW

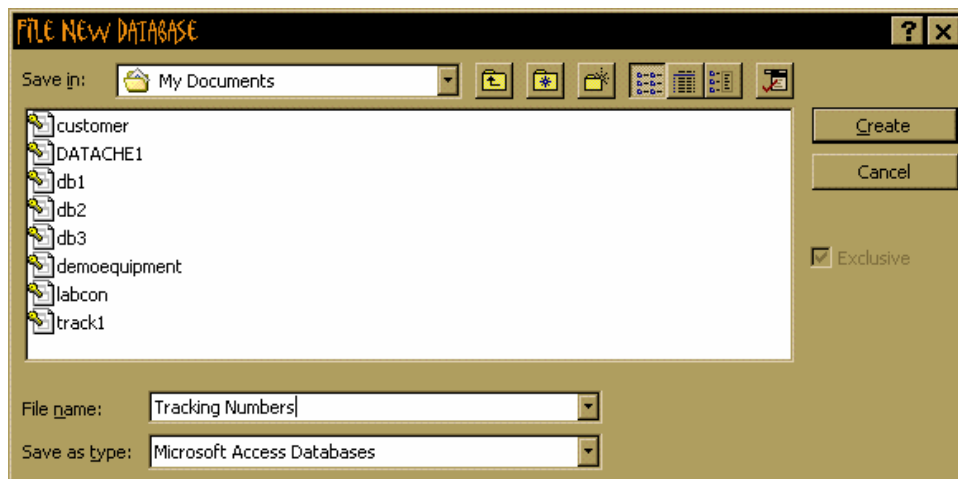
Legi for Windows requires an ODBC compliant database for use as a tracking serial number table. Using Tracking Serial Numbers in Legi for Windows requires a four-step setup process.

- A) Setup your Tracking Serial Number Database
- B) Setup your ODBC Data Source for Tracking Serial Number Database
- C) Setup your Legi for Windows Configuration
- D) Design of your label format using Tracking Serial Numbers

The following is a step-by-step instruction to create a tracking serial number database. If your label already uses an ODBC link, you can use this procedure to create an addition table to the existing database. Microsoft Access 97 is used for this example. Other ODBC compliant databases can be used.

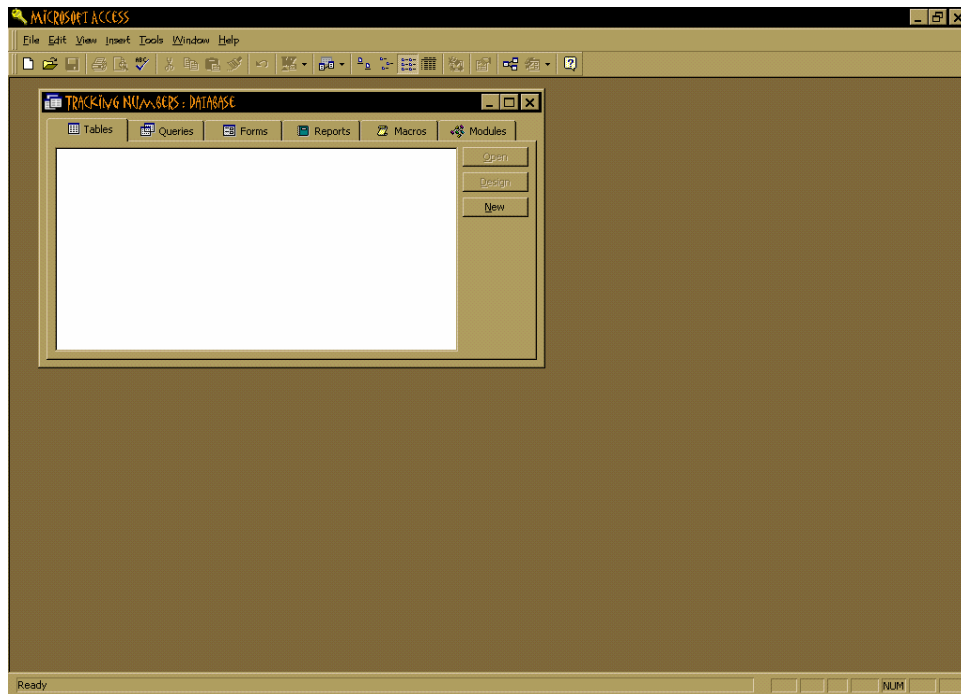
Step A: Setup your Tracking Serial Number Database.

- 1) Start up Access 97
- 2) Select "File" then "New Database"
- 3) Give the new database a name (for example "Tracking Numbers") where it says "File name"



- 4) Press "Create"

5) Select "Tables" then press "New"



6) Click on "Design View" then click on "OK"



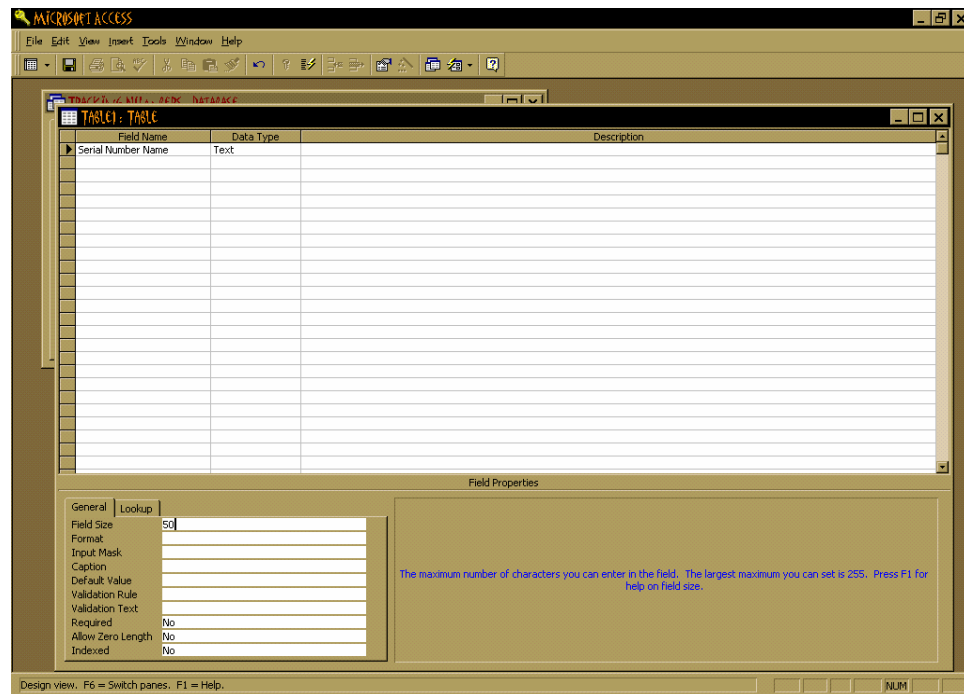
IMPORTANT

The database table must contain at least two fields:

1. Serial Number Name
2. Current Serial Number

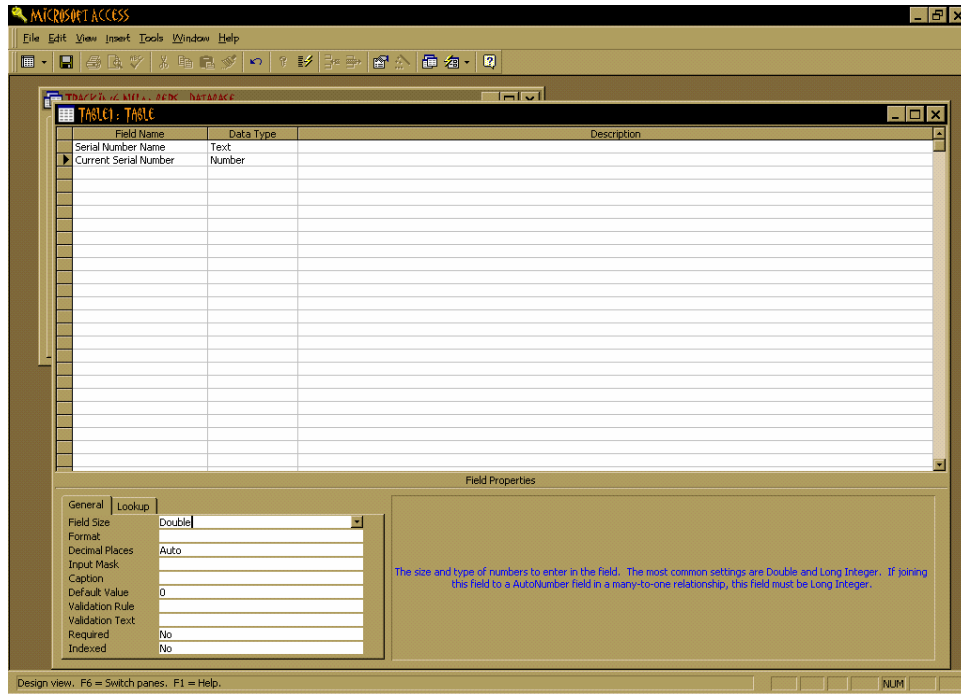
Those are the column names that are looked for whenever a tracking serial number table is read or updated. These titles must be typed exactly as shown or it will not work. Serial Number Name is a text field and should be defined as such. Current Serial Number is a number field and should be defined as a numeric entity rather than a text string. How to specify this will vary depending on the database that is used.

7) Under the Field Name column type "Serial Number Name". Under Data Type column choose "Text".



8) The default Field Size is 50. You may leave it at 50 or increase it if longer names will be used.

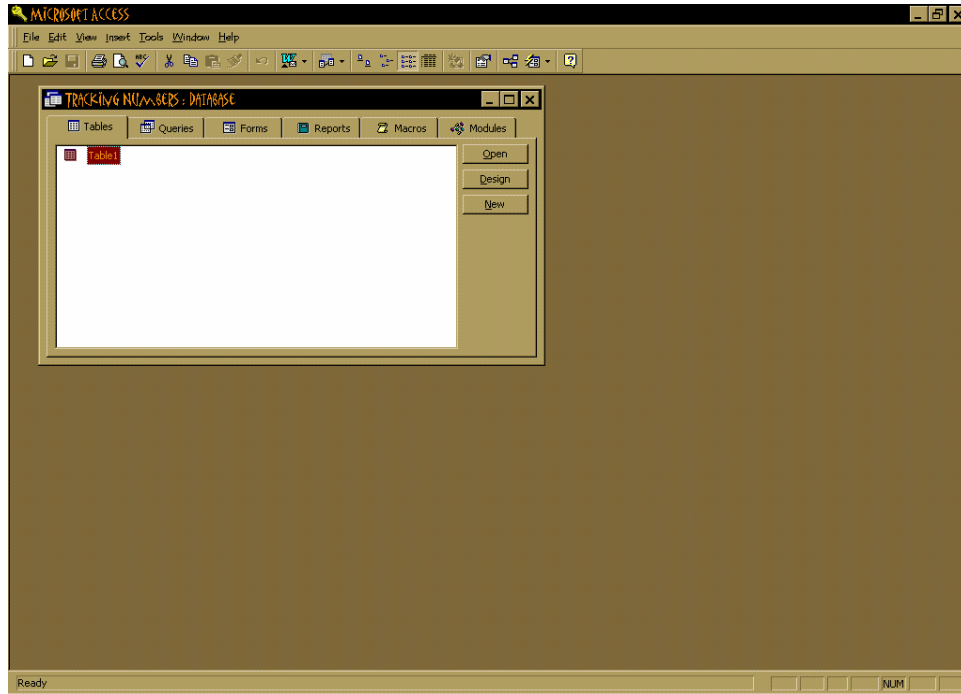
9) Type "Current Serial Number" under the Field Name Column. Choose "Number" for Data Type.



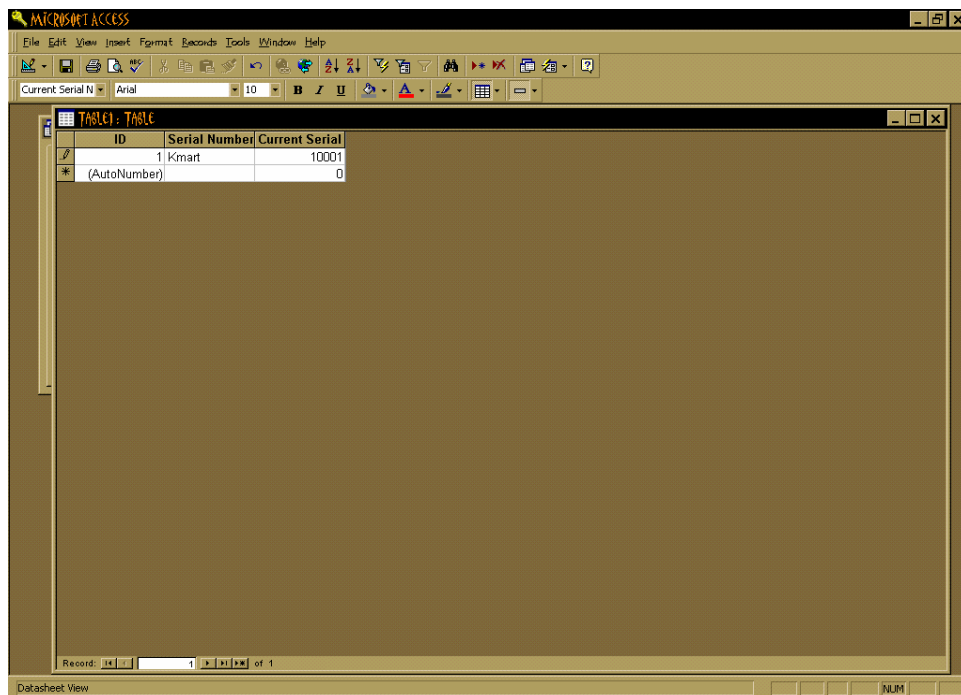
10) For Field Size choose "Double". Decimal Places can be "Auto" or "0" (zero).

11) From the Top of the page choose "File" then "Close". The software will ask you if you want to save as "Table 1". Say "Yes" or you can rename it. The software will ask if you want a primary key. For this example say "Yes". (Tracking Serial Numbers will still work if you say "NO" to this question)

12) Select "Table1". Then click on "Open"



13) Type in a name for your "Serial Number Name" (for example "Kmart"). Type in the beginning "Current Serial Number" (for example "10001"). Go to the top of the page and select "File" and then "Exit".

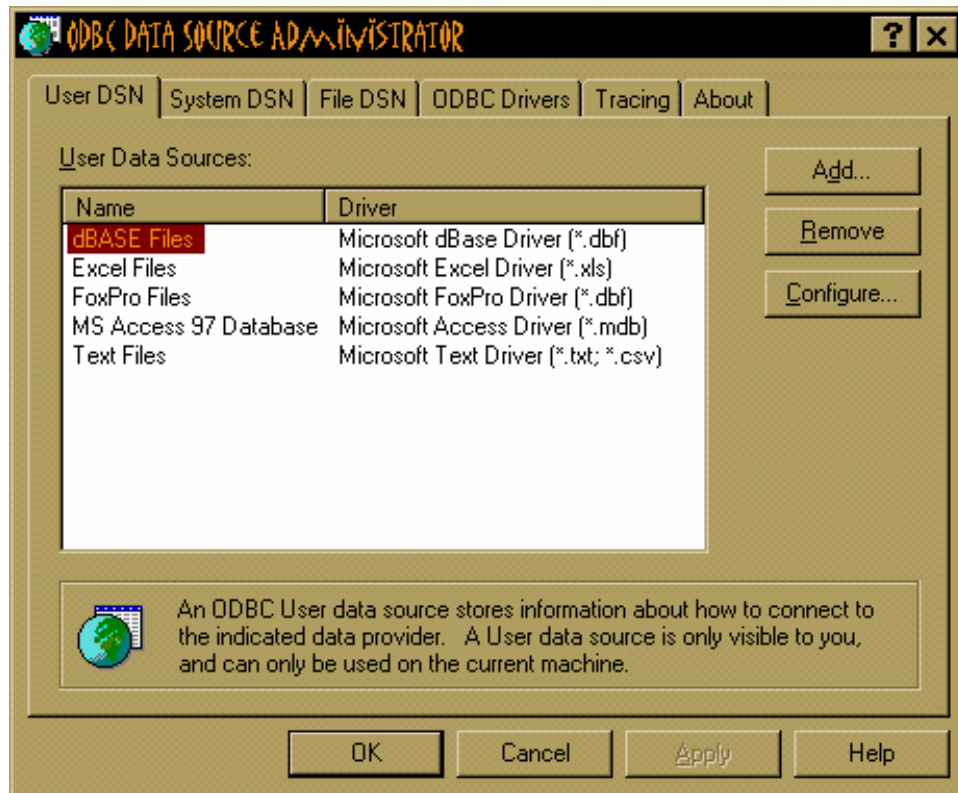


STEP B: Setup your ODBC Data Source for Tracking Serial Number Database

CONFIGURATION

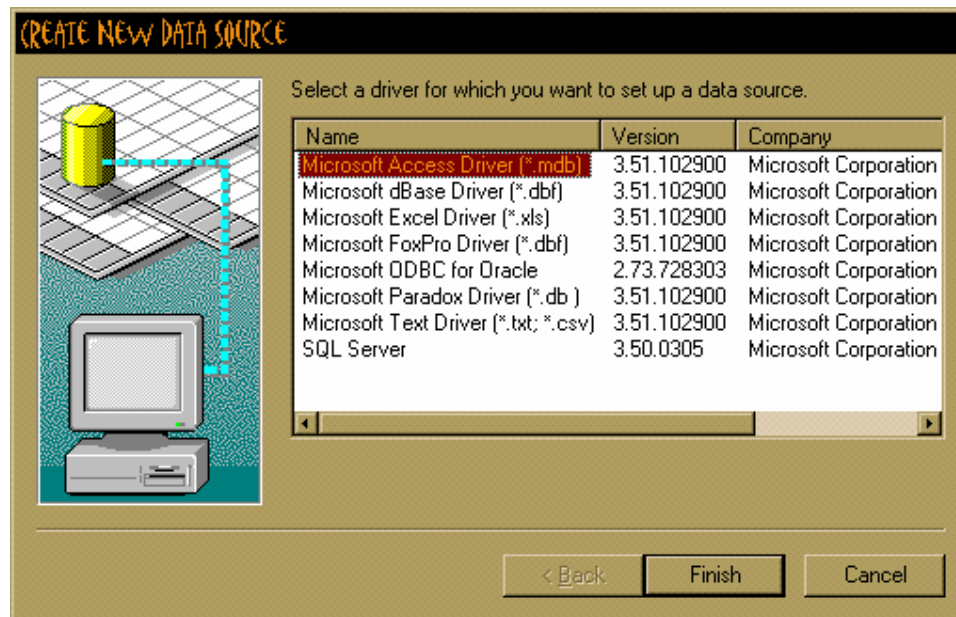
Use control panel and the ODBC administrator to setup a Data Source for the table you have created. Remember to specify the Data Source and Table in Configuration

- 1) Go to "Start" button. Select "Settings". Select "Control Panel". Select "32 bit ODBC"

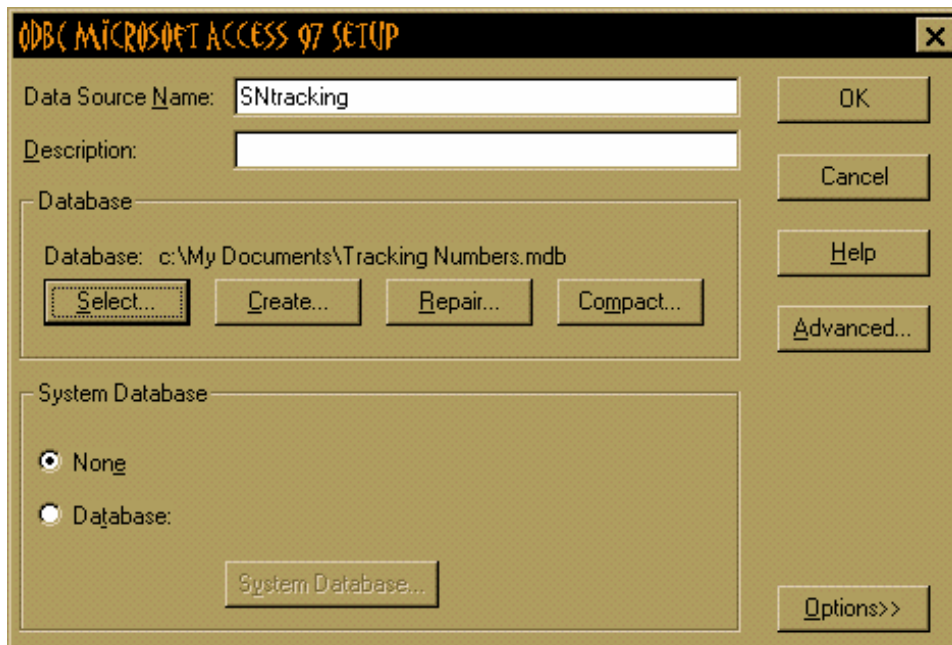


- 2) Click on "Add"

- 3) Select "Microsoft Access Driver (*.mdb)".

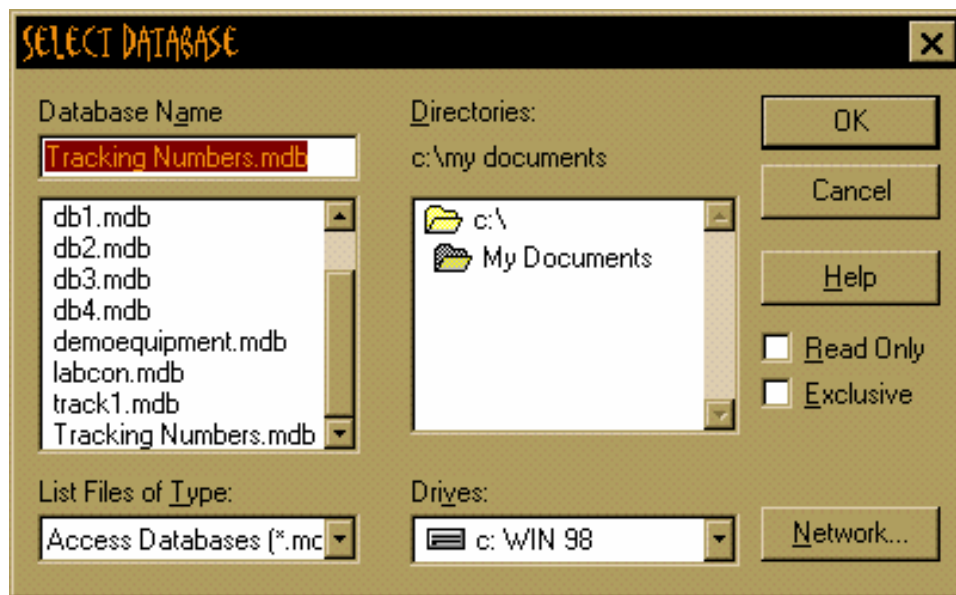


- 4) Click on "Finish"
- 5) Give it a Data Source Name - such as "SNtracking"



- 6) Click on Database "Select"

7) Choose the directory where you saved the database in Step A of your Tracking Serial Number Data.



8) Choose the Database Name "Tracking Numbers" from Step A then click on "OK"

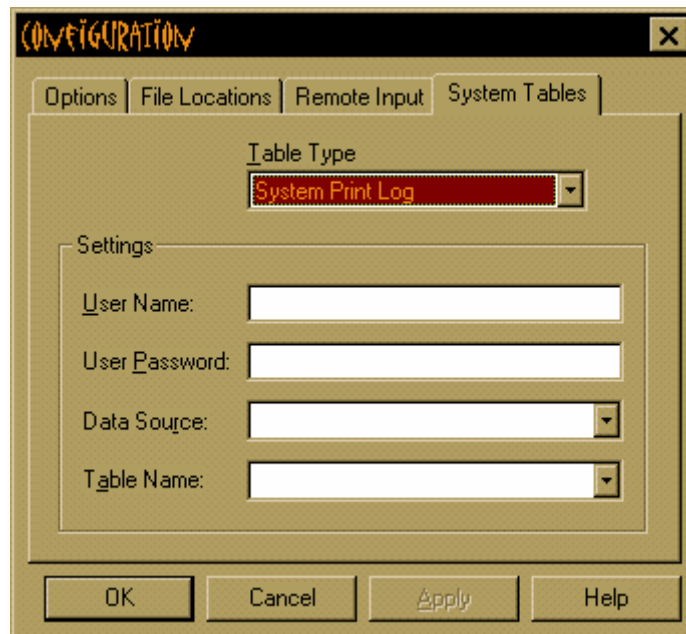
9) Click on the next two "OK" buttons should return you to your Desktop.

STEP C: Setup your Legi for Windows Configuration.

- 1) Start your Legi for Windows. After logging in select "FILE" and then select "Configuration"



- 2) Select "System Tables"



3) For Table Type select "Tracking Serial number Log"



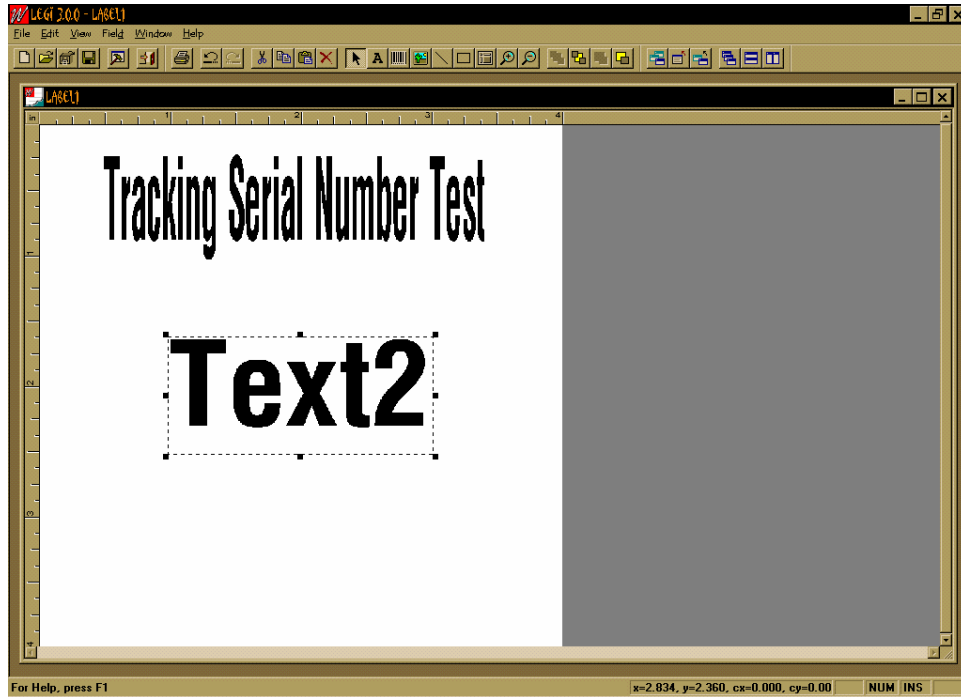
4) For Data Source Select the appropriate ODBC data source. For this example: "SNtracking"

5) For Table Name select the appropriate table. For this example: "Table1"

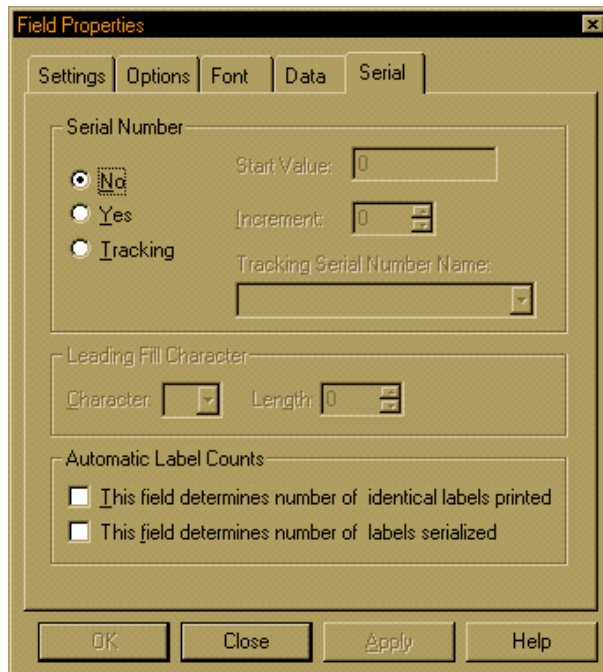
6) Select "OK"

STEP D: Design of your label format using Tracking Serial Numbers.

- 1) Go into Label Design of the label you want to have a Tracking Serial Number
- 2) Right click on the field that you wish to serialize (in this example "Text2")



- 3) Select Serial. (The Field Properties dialog box should open with the Serial Numbers tab activated)

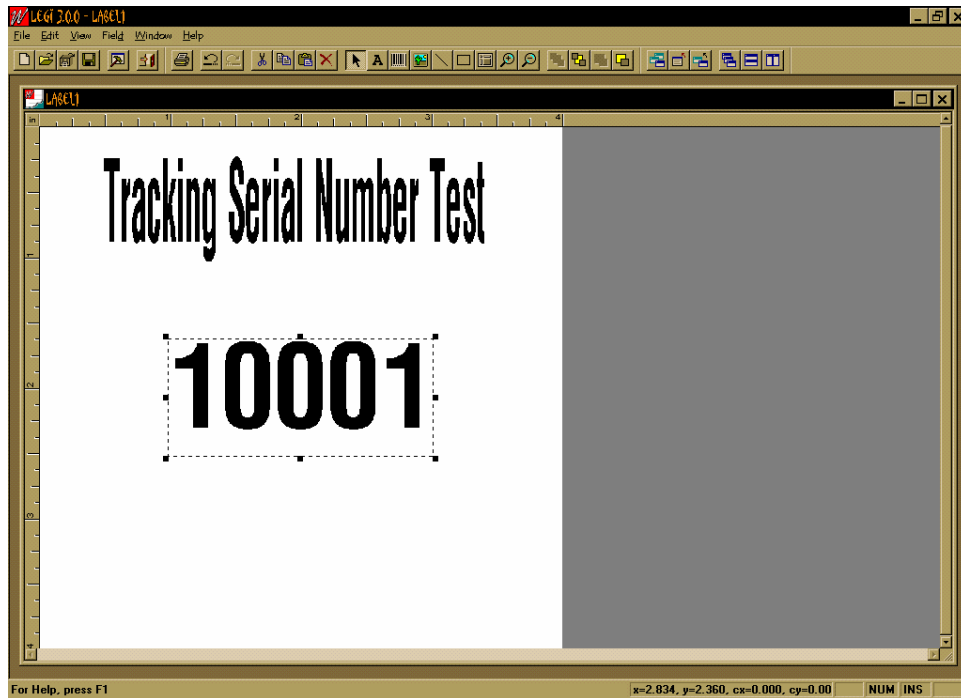


- 4) In the Serial Number section, click "Tracking"
- 5) From the Tracking Serial number Name drop-down list, select the appropriate serial number that was defined in "STEP A" instruction 13. (Kmart)

The screenshot shows the 'Field Properties' dialog box with the 'Serial' tab selected. The 'Serial Number' section has three radio buttons: 'No', 'Yes', and 'Tracking', with 'Tracking' selected. To the right of these are 'Start Value' (0), 'Increment' (1), and 'Tracking Serial Number Name' (Kmart). The 'Leading Fill Character' section has 'Character' and 'Length' (0) fields. The 'Automatic Label Counts' section has two unchecked checkboxes: 'This field determines number of identical labels printed' and 'This field determines number of labels serialized'. At the bottom are 'OK', 'Cancel', 'Apply', and 'Help' buttons.

- 6) Click "OK"

THE FINISHED PRODUCT



If you have any questions on this process, please contact Labeling Systems at 847.364.8500 ext 773.