

Weber®

Packaging Solutions



bestCode®
continuous innovations

BestCode's Series 8. Next generation marking and coding.

High speed. Non-contact. Continuous ink jet printing systems.

BestCode Industrial Marking and Coding Systems print best by, lot code, sell by, expiration codes and other identifying marks and codes on industrial and consumer goods to ensure product traceability.



A complete range of small character printing systems.

Series 8 systems print high speed, reliable marks and codes on a wide range of substrates, including plastic, glass, paper and more.

81

Designed for entry-level applications, targeted at operations printing 1 or 2 lines of text, with 1 shift per day, 5 days per week – up to 2000 hours of annual operation, with moderate production line speeds.

82

Designed for basic applications, targeted at operations printing 1, 2 or 3 lines of text, with 1-2 shifts per day, 5 days per week – up to 2000 hours of annual operation, with moderate production line speeds.

86

Designed for high-speed applications, targeted at operations printing 1, 2, or 3 lines of text, with 1-2 shifts per day, 5 days per week – up to 5000 hours of annual operation, with high-speed production line speeds.

88

Designed for high-speed/high-use applications, targeted at operations printing 1, 2, 3, 4 or 5 lines of text, with 2-3 shifts per day, 5-7 days per week – up to 10,000 hours of annual operation, with high-speed production line speeds.



CLEAN
start

1 minute
Ready to print

Ink range. A range of quick to immediate dry inks have been developed for use with Series 8 printing systems. Inks available include MEK, Acetone, Ethanol, and Acetone/Ethanol blend based inks. Multiple colors are available and a number of specialty fluids for unique applications.



10.4"

Color LCD Touch Interface



Clearer and simpler to operate.

A large, 10.4" Color Touch Display is employed to allow easy visualization of all operating information. Operating functions are large, intuitive icon-based buttons, making full use of color as status indicators. This WYSIWYG environment provides the most realistic view of creating your print message. Using "drag and drop" field based message, a graphical screen provides exacting location of your message format.

BestCode products are designed for the global market. Systems use multi-national character sets, featuring multiple languages and Unicode character printing – over 60,000 characters.



Bottles drain completely so you can print every drop.

External fill fluid addition allows on-the-fly ink and solvent filling without opening the enclosure. The large, clean, mistake-proof intelligent one quart fluid containers are sized differently eliminating the risk of adding solvent or ink into the wrong tank, while extending time between fluid additions. The quart ink and solvent bottles know their fluid type and shelf life.

LargeVolume™ ink and solvent tanks.

High-volume, demanding print applications are achieved with minimal user intervention. Tanks hold multiple liters of fluids for extended run time. Ink tank volumes can operate multiple months between additions. Solvent tank volumes can operate 1000+ operational hours between additions.

1000+
hours
Operational

EcoTec™ fluid management system.

Reduces solvent consumption, lowering overall cost of ownership while extending the time between solvent additions and filter replacements.



EcoTec™ is a proprietary ink tank, reduced cycle pump, SmartFilter™ and a twin trap vapor condensing unit purposely designed for CIJ Technology. The ink tank is designed to last the life of the system. The reduced-cycle pump extends pump life and lowers fluid operating temperature, resulting in lower evaporation rates.

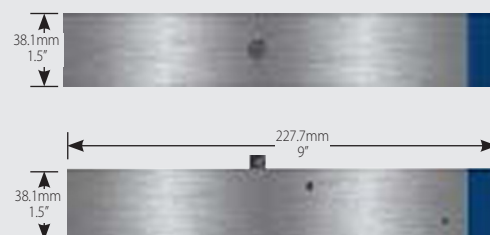
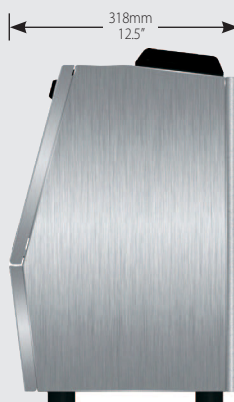
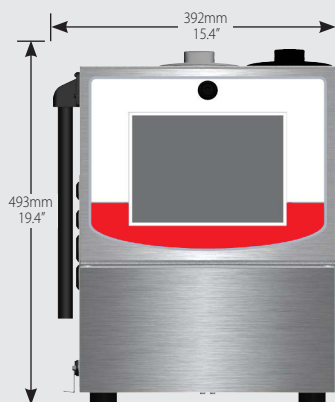
Vapor condensing and reduced solvent evaporation lowers overall ownership cost and reduces interaction time adding solvent to the system. Filters know their install date, keeping track of usage and alerting you when the ink filter should be replaced. Quick change, extended life filters operate up to 10,000 hours – 12 months.

TempSense™ ventilation.

Using automatic detection systems, variable fan speeds and highly efficient air flow, TempSense™ ensures the system operates in the correct temperature range. High-volume air filters operate 12 months between service intervals.



Printhead	Continuous Ink Jet (CIJ) Technology, Single Printhead Control			
User Interface	10.4" (264mm) Color LCD, Touch Screen, Icon based - Graphical User Interface (GUI)			
Lines of Print	1-2 Lines, 19 pixel	1-3 Lines, 25 pixel	1-3 Lines, 25 pixel	1-4 Lines, 32 pixel
Print Fonts	5, 7, 9, 12, 16, 19	5, 7, 9, 12, 16, 19, 25	5, 7, 9, 12, 16, 19, 25	5, 7, 9, 12, 16, 19, 25, 32
Electronic Hardware	32 Bit ARM 9, 208 Mhz Processor			
Storage	4GByte Solid State Drive, 16 MByte Flash, 128 MByte RAM, USB Interface (thumb drive)			
Machine Interface	None	RS232, Ethernet	RS232, Ethernet	RS232, Ethernet
Inputs	1 Photocell, 1 Photocell or Programmable Input, 1 Shaft Encoder, 8 Programmable – Field programmable input, remote message selection option – 256 possible selections			
Outputs	4 Programmable Alarms (open collector,150mA sink), 1 Programmable Dry Contact RelayExternal Power (+24VDC 500mA)			
Enclosure	Stainless Steel Enclosure			
Ingress Protection	IP55	IP55	IP55	IP65
Filter Life	2,000 hours	2,000 hours	5,000 hours	10,000 hours
Operating Environment	Temperature: 32°—122° F (0°—50° C), % Relative Humidity: 10—90% (non condensing)			
Electrical Requirements	Auto Ranging: 100—240 VAC (3 Amp), Frequency: 50—60Hz, Power Consumption: 50 watts			
Compliance	CE Certified, RoHS Compliant			
Message/Code Creation	Dynamic Message Storage (over 1000 Messages), WYSIWYG Message Editing, Drag/Drop Field Based Formatting, Multi-National (Unicode) Character Printing, Download Fonts, Integrated Font Editor, Real and Expiration Time and Date, Shift and Rollover Functions,Product and Batch Counting, Download Graphics and Integrated Editor, Continuous and Repeat Print Capability, 1D Linear and 2D Data Matrix Bar Codes			
Operation Features	Icon Based Operation, Single Button Start, Single Button Stop/Power Off Password Security, Automatic Diagnostics, Error and Activy Logs, Service Reminders, Backup / Restore Functions, Downloadable Software Updates, Multiple Operator Languages, Download Language Translations			
Ink Delivery	SmartFill™ Ink Bottle: 32oz (946ml), SmartFill™ Solvent Bottle: 32oz (946ml)			
Fluid Capacity	Ink Capacity: 1 Bottle, Solvent Capacity: 2 Bottles			
Ink Types	MEK Only	Quick Dry to Immediate, Full Range — MEK, Ethanol, Acetone		
Ink Colors	“Fast Dry” Black Only	Black, Red, Blue, Green, Yellow, White, Invisible (UV Readable)		
Specialty Systems	—	—	—	88S micro, 88S pigment, 88S food
Printhead Umbilical	10 Feet Only	10 Feet (3 Meter) *other options on request		
Printing	Printhead Orientation - Omni Directional			
Image Height	Adjustable: .025"(.6mm) - .5"(12mm)			
Throw Distance	Non-contact printing ¼"(6mm) – 2"(50mm) throw distance*			*Nozzle dependent
Print Speed Capability	600 ft/minute (196M/min)	600 ft/minute (196M/min)	1500 ft/minute (470M/min)	1500 ft/minute (470M/min)
Weight	45 lbs (20kg)			
Optional Accessories	Alarm Beacon, Photocells, Mountings, Shaft Encoder, Printhead Wash Station Positive Air Kit (for high dust, high moisture, print head pointing up)			



By request, BestCode can adapt hardware and software to meet specific application demands.